

TIFTON, GEORGIA

AL-5398 (FAA)

26078

| | | | |
|--|------------------------|-----------------------------|---|
| WAAS CH 61118 W34A | APP CRS 332° | Rwy Ldg TDZE Apt Elev | 6506 354 355 |
|--|------------------------|-----------------------------|---|

RNAV (GPS) RWY 34

HENRY TIFT MYERS (TMA)

⚠ For uncompensated Baro-VNAV systems, LNAV/VNAV NA below -15°C (5°F) or above 54°C (130°F).
⚠ DME/DME RNP-0.3 NA. Circling Rwy 10 NA at night.
 Rwy 34 helicopter visibility reduction below ¼ SM NA.

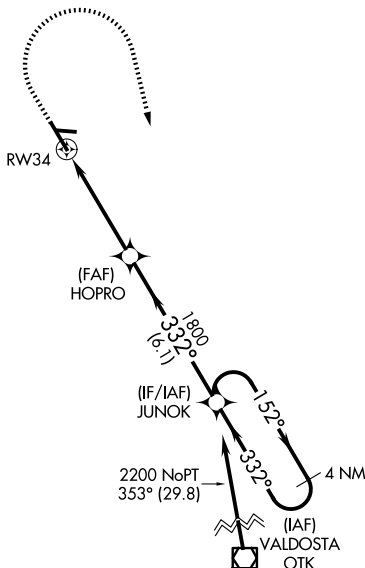
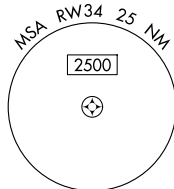


MISSED APPROACH: Climb to 900 then climbing right turn to 2200 direct JUNOK and hold.

AWOS-3PT
118.525

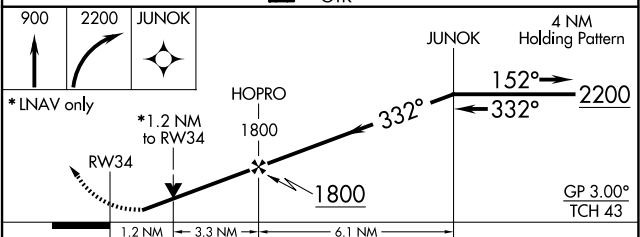
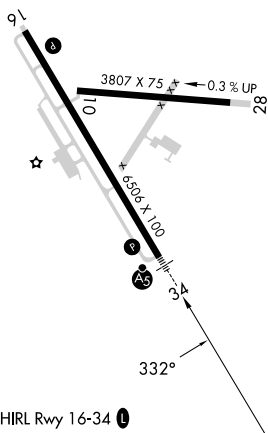
VALDOSTA APP CON ★
126.6 285.6

UNICOM
122.7 (CTAF) 0



Procedure NA for arrivals at OTK VOR/DME on V579 southbound.

ELEV 355 TDZE 354



| CATEGORY | A | B | C | D |
|--------------|----------------------|-----------------------|-----------------------|-----------------------|
| LPV DA | | 638-¾ | 284 (300-¾) | |
| LNAV/VNAV DA | | 684-¾ | 330 (400-¾) | |
| LNAV MDA | | 780-¾ | 426 (500-¾) | |
| CIRCLING | 920-1 565 (600-1) | 1060-1 705 (800-1) | 1060-2 705 (800-1) | 1240-3 885 (900-3) |

TIFTON, GEORGIA
Amdt 1A 17AUG17

31°26'N-83°29'W

RNAV (GPS) RWY 34

HENRY TIFT MYERS (TMA)

SE-4, 14 MAY 2026 to 11 JUN 2026

SE-4, 14 MAY 2026 to 11 JUN 2026