

LOC I-FZU 111.1	APP CRS 259°	Rwy Ldg TDZE Apt Elev	7005 462 463
---------------------------	------------------------	-----------------------------	---

ILS or LOC RWY 26L

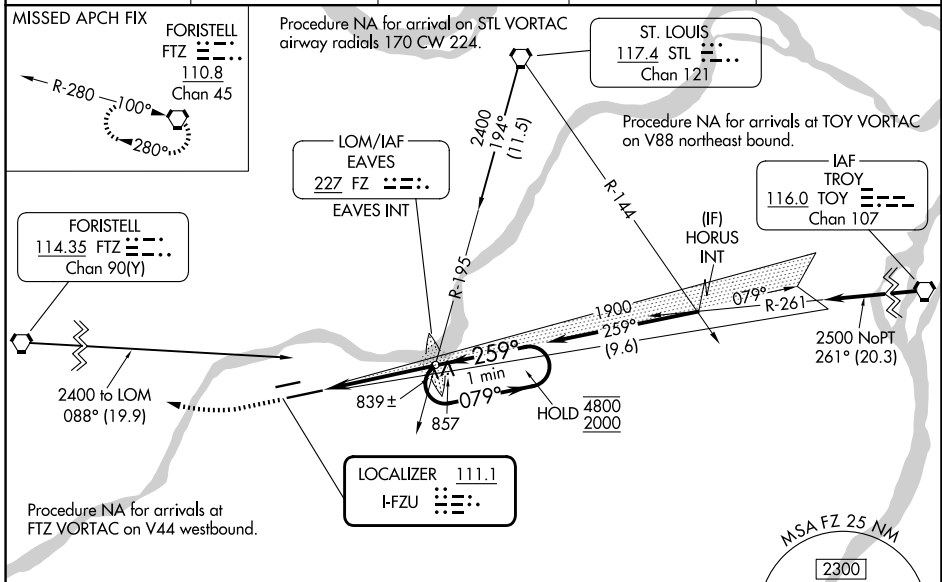
SPIRIT OF ST LOUIS (SUS)

⚠ When local altimeter setting not received, use St Louis Lambert Intl altimeter setting:
⚠ increase S-ILS 26L DA to 705 feet; increase all MDAs 60 feet and S-LOC 26L visibility
 Cat C and D ½ SM and Circling visibility C ¼ SM. For inop ALS, increase S-LOC 26L Cats C
 and D visibility to 1½ SM. For inop ALS when using St Louis Lambert Intl altimeter setting,
 increase S-LOC 26L Cats C and D visibility to 2 SM. *RVR 1800 authorized with use of FD
 or AP or HUD to DA (NA when using St Louis Lambert Intl altimeter setting).



MISSED APPROACH:
 Climb to 2400 then
 right turn direct FTZ
 VORTAC and hold.

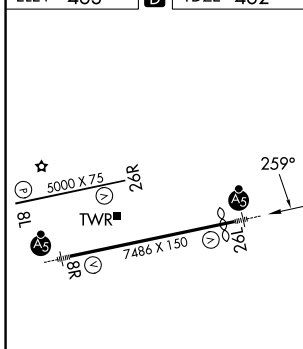
ATIS 134.8	ST. LOUIS APP CON 126.5 254.3	SPIRIT TOWER ★ 124.75 (CTAF) 257.2	GND CON 121.7	UNICOM 122.95
----------------------	---	--	-------------------------	-------------------------



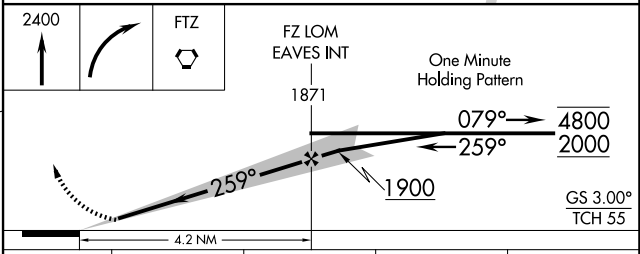
NC-3, 14 MAY 2026 to 11 JUN 2026

NC-3, 14 MAY 2026 to 11 JUN 2026

ELEV 463	D	TDZE 462
----------	----------	----------



HIRL Rwy 8R-26L					
MIRL Rwy 8L-26R					
FAF to MAP 4.2 NM					
Knots	60	90	120	150	180
Min:Sec	4:12	2:48	2:06	1:41	1:24



CATEGORY	A	B	C	D
S-ILS 26L *	662/24 200 (200-½)			
S-LOC 26L	1140/24	678 (700-½)	1140-1½	678 (700-1½)
CIRCLING	1140-1	677 (700-1)	1180-2	1360-3
			717 (800-2)	897 (900-3)

ST. LOUIS, MISSOURI
 Orig-F 25JAN24

38°40'N-90°39'W

SPIRIT OF ST LOUIS (SUS)

ILS or LOC RWY 26L