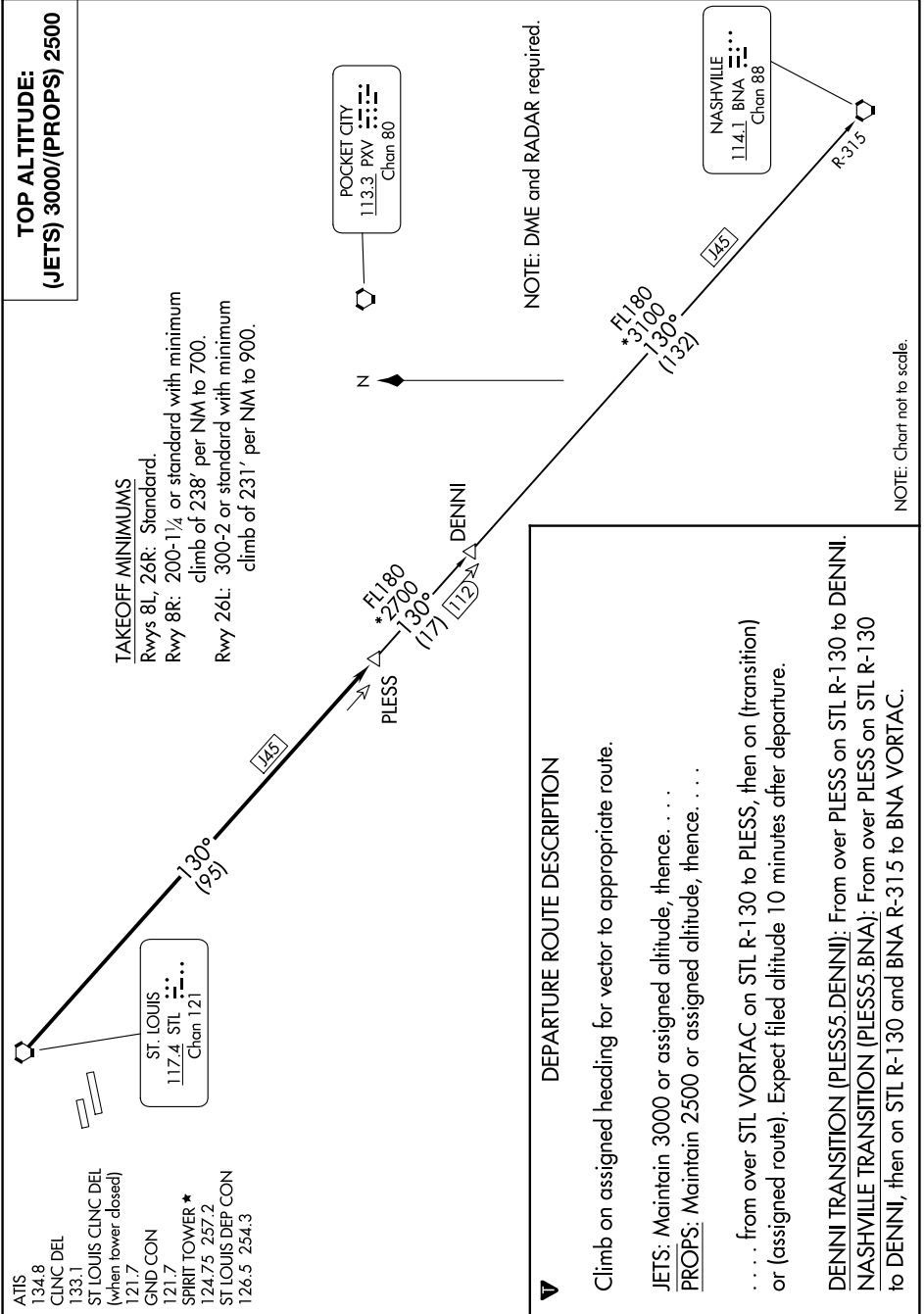


PLESS FIVE DEPARTURE

AL-5400 (FAA)

SPIRIT OF ST LOUIS (STLS)
ST. LOUIS, MISSOURI

NC-3, 14 MAY 2026 to 11 JUN 2026



PLESS FIVE DEPARTURE

NC-3, 14 MAY 2026 to 11 JUN 2026

NOTE: Chart not to scale.

NOTE: DME and RADAR required.

DEPARTURE ROUTE DESCRIPTION

Climb on assigned heading for vector to appropriate route.

JETS: Maintain 3000 or assigned altitude, thence. . . .

PROPS: Maintain 2500 or assigned altitude, thence. . . .

. . . . from over STL VORTAC on STL R-130 to PLESS, then on (transition or (assigned route). Expect filed altitude 10 minutes after departure.

DENNI TRANSITION (PLESS5.DENNI): From over PLESS on STL R-130 to DENNI.

NASHVILLE TRANSITION (PLESS5.BNA): From over PLESS on STL R-130 to DENNI, then on STL R-130 and BNA R-315 to BNA VORTAC.