

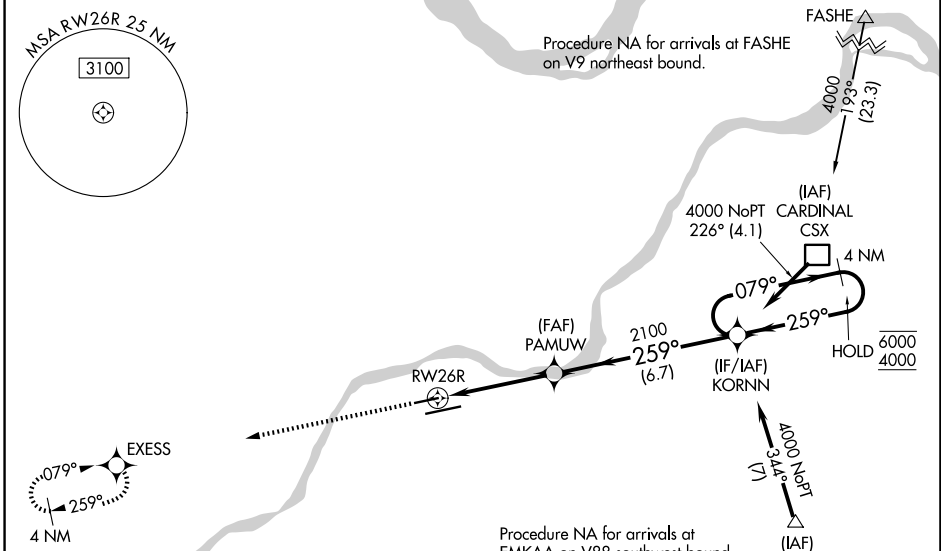
WAAS CH 97414 W26A	APP CRS 259°	Rwy Ldg TDZE 463 Apt Elev 463
--	------------------------	---

RNAV (GPS) RWY 26R

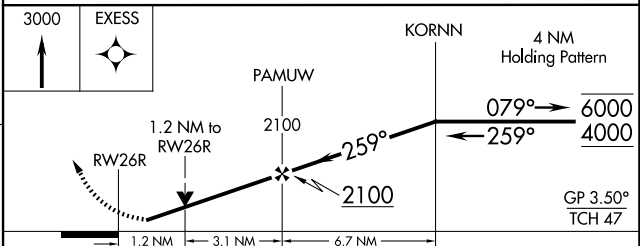
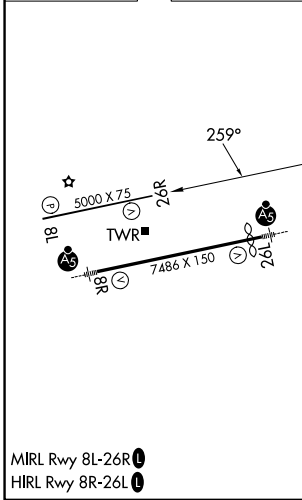
SPIRIT OF ST LOUIS (SUS)

RNP APCH - GPS.	<p>Baro-VNAV and VDP NA when using St Louis Lambert Intl altimeter setting. Rwy 26R helicopter visibility reduction below 3/4 SM NA. For uncompensated Baro-VNAV systems, LNAV/VNAV NA below -18°C or above 54°C. When local altimeter setting not received, use St Louis Lambert Intl altimeter setting: increase LPV DA to 798 feet and all visibilities 1/2 SM, increase LNAV/VNAV DA to 823 feet and all visibilities 1/2 SM; increase all MDAs 60 feet.</p>	<p>MISSED APPROACH: Climb to 3000 direct EXCESS and hold.</p>

ATIS 134.8	ST. LOUIS APP CON 126.5 254.3	SPIRIT TOWER ★ 124.75 (CTAF) 0 257.2	GND CON 121.7	UNICOM 122.95
----------------------	---	--	-------------------------	-------------------------



ELEV 463	D	TDZE 463
----------	---	----------



CATEGORY	A	B	C	D
LPV DA	755-7/8	292 (300-7/8)		NA
LNAV/VNAV DA	780-7/8	317 (400-7/8)		NA
LNAV MDA	940-1	477 (500-1)		NA
CIRCLING	1100-1	1140-1		NA
	637 (700-1)	677 (700-1)		

NC-3, 14 MAY 2026 to 11 JUN 2026

NC-3, 14 MAY 2026 to 11 JUN 2026