

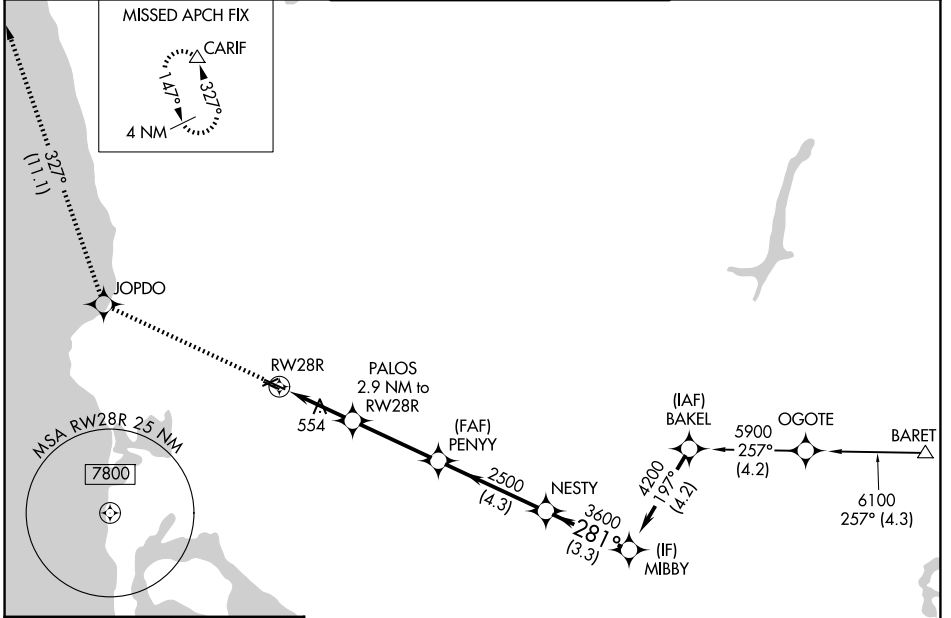
WAAS CH 45710 W28A	APP CRS 281°	Rwy Ldg TDZE Apt Elev	3399 423 427
--	------------------------	-----------------------------	---

RNAV (GPS) RWY 28R

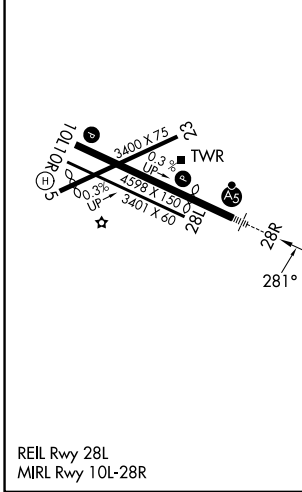
MONTGOMERY-GIBBS EXEC (MYF)

RNP APCH.		MALSR	MISSED APPROACH: Climb to 3000 direct JOPDO and on track 327° to CARIF and hold.
▼ Rwy 28R helicopter visibility reduction below ¾ SM NA. ▲ For uncompensated Baro-VNAV systems, LNAV/VNAV NA below -15°C or above 54°C.			

ATIS 126.9	SOCAL APP CON 124.35 279.625	MONTGOMERY TOWER ★ 119.2 (CTAF) 0 269.4 (5, 10L/R, 23, 28L) 125.7 269.4 (28R)	GND CON 118,225	UNICOM 123,075
----------------------	--	---	---------------------------	--------------------------



ELEV 427	TDZE 423
-----------------	-----------------



	3000 JOPDO	tr 327°	CARIF				
				PALOS 2.9 NM to RWY 28R	PENNY 2500	NESTY	MIBBY 4200
				* 1.2 NM to RWY 28R			GP 3.00° TCH 41
				RWY 28R	1380*	2500	281° 3600 4200
CATEGORY	A	B	C	D			
LPV DA	673-¾	250 (300-¾)		NA			
LNAV/VNAV DA	750-¾	327 (400-¾)		NA			
LNAV MDA	840-¾	417 (500-¾)		NA			
CIRCLING	920-1	493 (500-1)		NA			

SW-3, 14 MAY 2026 to 11 JUN 2026

SW-3, 14 MAY 2026 to 11 JUN 2026