

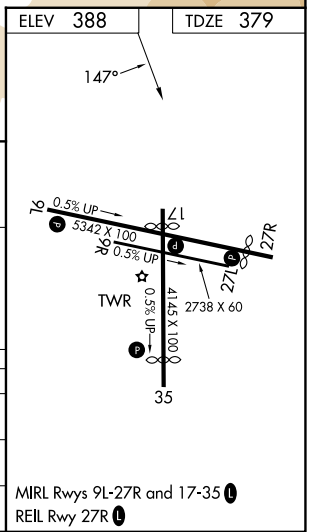
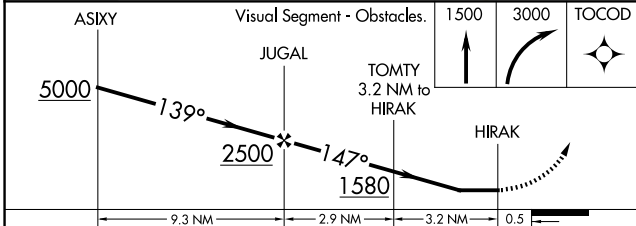
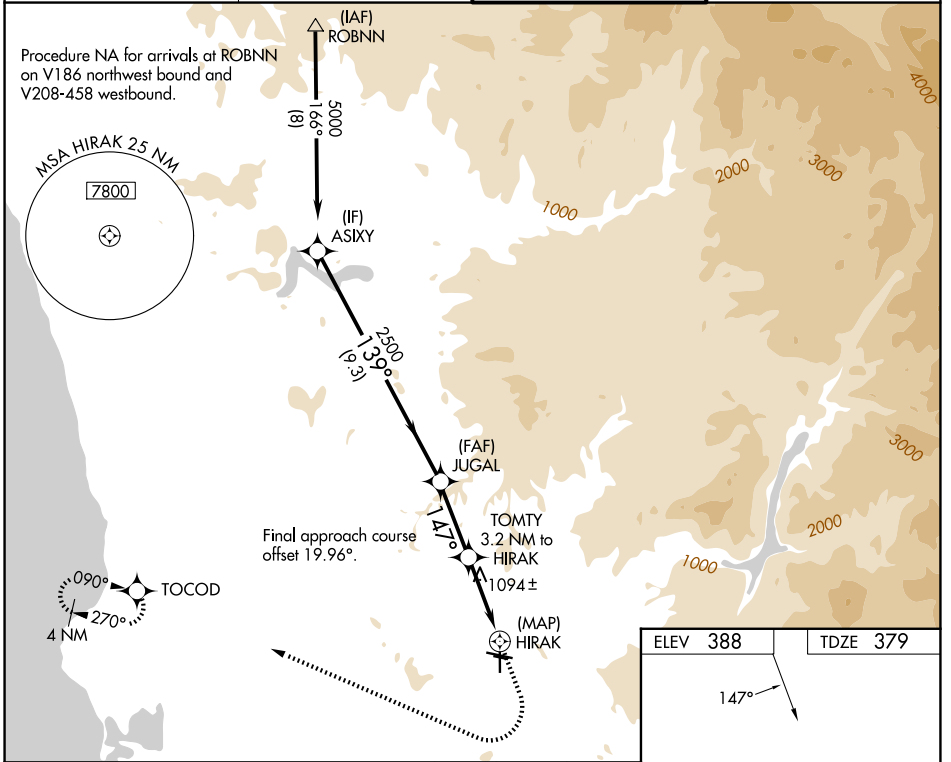
WAAS CH <b>86928</b> <b>W17A</b>	APP CRS <b>147°</b>	Rwy Ldg TDZE Apt Elev	<b>3695</b> <b>379</b> <b>388</b>
--	------------------------	-----------------------------	---

# RNAV (GPS) RWY 17

GILLESPIE FLD (SEE)

RNP APCH - GPS.	MISSED APPROACH: Climb to 1500 then climbing right turn to 3000 direct TOCOD and hold.
<p><b>⚠</b> Circling NA northeast of Rwy 17 and 27R. When local altimeter setting not received, use Miramar MCAS altimeter setting and increase all MDA 40 feet. Rwy 17 helicopter visibility reduction below 1 SM NA. Circling Rwy 27R, 35 NA at night.</p>	

ATIS <b>125.45</b>	SOCAL APP CON <b>124.35 279.625</b>	GILLESPIE TOWER* <b>120.7 (CTAF) 257.8</b>	GND CON <b>121.7</b>
-----------------------	--	---	-------------------------



CATEGORY	A	B	C	D
LP MDA	1360-1¼ 981 (1000-1¼)	1360-1½ 981 (1000-1½)	1360-3	981 (1000-3)
LNAV MDA	1380-1¼ 1001 (1000-1¼)	1380-1½ 1001 (1000-1½)	1380-3	1001 (1000-3)
CIRCLING	1440-1¼ 1052 (1100-1¼)	1440-1½ 1052 (1100-1½)	1940-3	1552 (1600-3)

SW-3, 14 MAY 2026 to 11 JUN 2026

SW-3, 14 MAY 2026 to 11 JUN 2026