

APP CRS	Rwy Ldg	5342
094°	TDZE	379
	Apt Elev	388

RNAV (GPS) RWY 9L

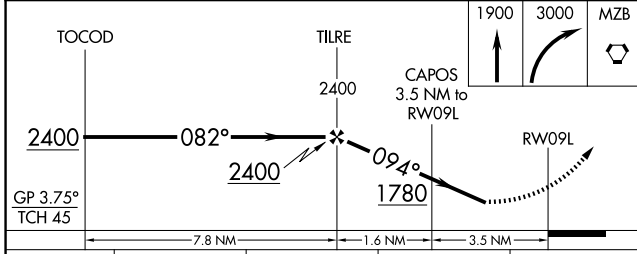
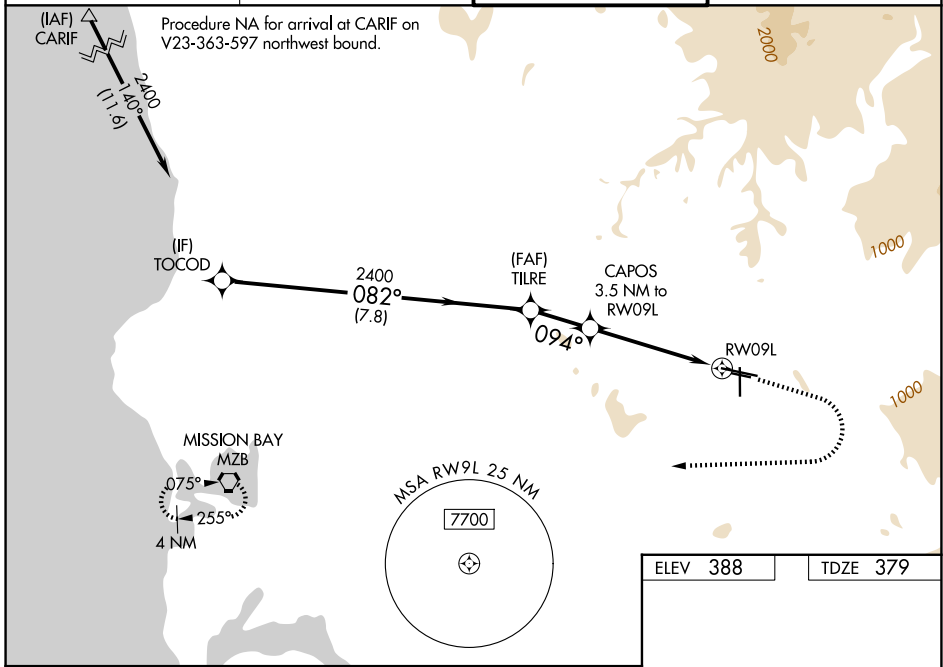
GILLESPIE FLD (SEE)

RNP APCH - GPS.

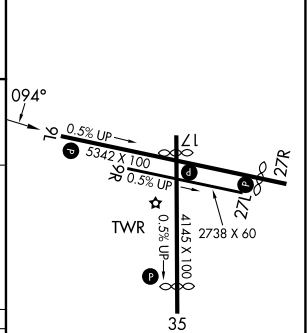
⚠ Rwy 9L helicopter visibility reduction below 1 SM NA. Circling NA northeast of Rwy 17 and 27R. For uncompensated Baro-VNAV systems, LNAV/VNAV NA below -15° or above 54°C. Circling Rwy 9L, 27L/R, 35 NA at night. Rwy 9L Straight-in minimums NA at night. When local altimeter setting not received, use NKX altimeter setting and increase LNAV/VNAV DA to 1306 feet. Increase all MDAs 40 feet.

MISSED APPROACH: (Do not exceed 180K until MZB) Climb to 1900 then climbing right turn to 3000 direct MZB VORTAC and hold.

ATIS 125.45	SOCAL APP CON 124.35 279.625	GILLESPIE TOWER* 120.7 (CTAF) 257.8	GND CON 121.7
-----------------------	--	---	-------------------------



ELEV 388	TDZE 379
----------	----------



CATEGORY	A	B	C	D
LNAV/VNAV DA	1272-2½ 893 (900-2½)			NA
LNAV MDA	1480-1¼ 1101 (1100-1¼)	1480-1½ 1101 (1100-1½)	1480-3 1101 (1100-3)	NA
CIRCLING	1480-1¼ 1092 (1100-1¼)	1480-1½ 1092 (1100-1½)	1940-3 1552 (1600-3)	NA

MIRL Rwy 9L-27R and 17-35 **⚠**
REIL Rwy 27R **⚠**

SW-3, 14 MAY 2026 to 11 JUN 2026

SW-3, 14 MAY 2026 to 11 JUN 2026