

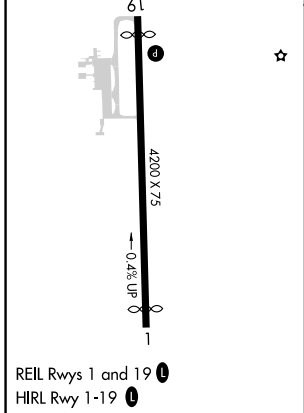
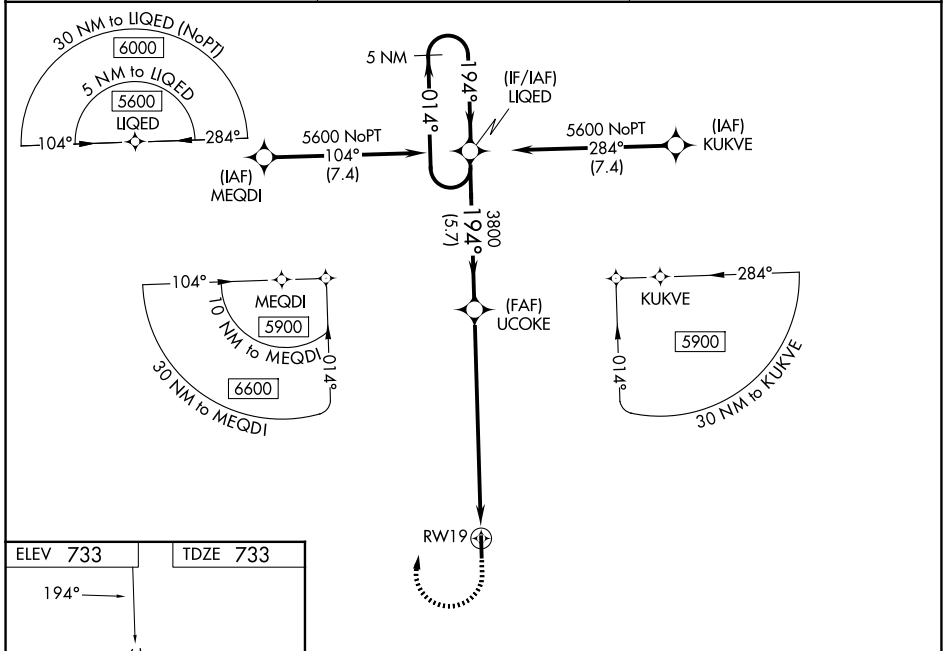
WAAS CH <b>97531</b> <b>W19B</b>	APP CRS <b>194°</b>	Rwy Ldg TDZE Apt Elev	<b>3950</b> <b>733</b> <b>733</b>
--	------------------------	-----------------------------	---

# RNAV (GPS) Z RWY 19

MORRISVILLE-STOWE STATE (MVL)

RNP APCH - GPS.	MISSED APPROACH: (Do not exceed 165K until LIQED) Climb to 2200 then climbing right turn to 5600 direct LIQED and hold, continue climb-in-hold to 5600. Missed approach requires minimum climb of 325 feet per NM to 3000; if unable to meet climb gradient, see RNAV (GPS) Y Rwy 19.
<p><b>⚠</b> Circling NA for Cat C E of Rwy 1-19. VDP NA when using Burlington altimeter setting. Rwy 19 helicopter visibility reduction below 3/4 SM NA. When local altimeter setting not received, use Burlington altimeter setting: increase LPV DA to 1380 feet and all visibilities 3/8 SM. Increase LNAV/VNAV DA to 1690 feet and all visibilities 1/2 SM. Increase all MDAs 120 feet. Baro-VNAV NA.</p>	

ASOS <b>135.625</b>	BOSTON CENTER <b>135.7 282.2</b>	UNICOM <b>122.8 (CTAF) 0</b>
------------------------	-------------------------------------	---------------------------------



	2200	5600	LIQED	5 NM Holding Pattern
	↑	↪	✦	
*LNAV only	*2.7 NM to RWY19		LIQED	
	UCOKE	3800	LIQED	5600
	RWY19	3800	194°	014°
	2.7 NM	5.5 NM	5.7 NM	GP 3.50° TCH 31
CATEGORY	A	B	C	D
LPV DA	1270-1½	537 (600-1½)		NA
LNAV/VNAV DA	1580-2½	847 (900-2½)		NA
LNAV MDA	1760-1¼ 1027 (1100-1¼)	1760-1½ 1027 (1100-1½)	1760-3 1027 (1100-3)	NA
CIRCLING	1760-1¼ 1027 (1100-1¼)	1780-1½ 1047 (1100-1½)	1980-3 1247 (1300-3)	NA

NE-1, 14 MAY 2026 to 11 JUN 2026

NE-1, 14 MAY 2026 to 11 JUN 2026