

LOC/DME I-BPK 111.95 Chan 56(Y)	APP CRS 049°	Rwy Ldg TDZE 928 Apt Elev 928
--	------------------------	---

ILS or LOC RWY 5

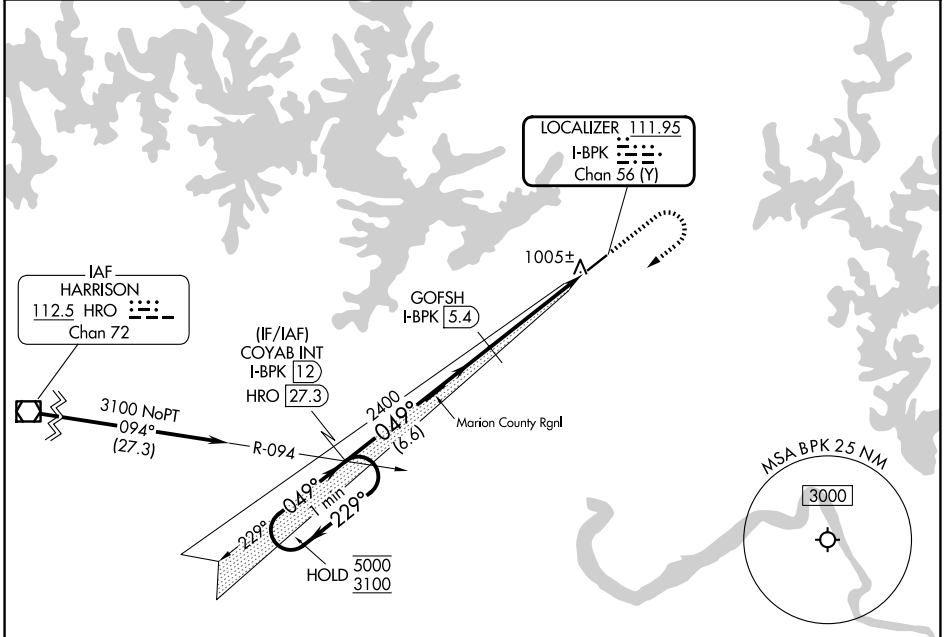
BAXTER COUNTY (BPK)

DME required for LOC only.

⚠ Circling NA for Cat C, southeast of Rwy 5-23. Procedure NA at night.
 ⚠ Rwy 5 helicopter visibility reduction below 1 SM NA.

MISSED APPROACH: Climb to 2000, then climbing right turn to 3100 on heading 230° and HRO R-094 to COYAB INT/I-BPK 12 DME and hold.

ASOS 133.975	MEMPHIS CENTER 126.85 281.55	UNICOM 123.0 (CTAF) 0
------------------------	--	---------------------------------



SC-1, 14 MAY 2026 to 11 JUN 2026

SC-1, 14 MAY 2026 to 11 JUN 2026

ELEV 928	TDZE 928			
VGSI and ILS glidepath not coincident (VGSI Angle 3.00/TCH 38). One Minute Holding Pattern COYAB INT I-BPK (12) HRO (27.3) GOFSH I-BPK (5.4) I-BPK (0.9)				
5000 ← 229° 3100 ← 049° → GS 3.00° TCH 44 2400 2400 2400 6.6 NM 4.5 NM				
CATEGORY	A	B	C	D
S-ILS 5	1178-1 250 (300-1)			NA
S-LOC 5	1260-1 332 (400-1)			NA
CIRCLING	1400-1	472 (500-1)	1460-1½ 532 (600-1½)	NA

REIL Rwy 5 0
MIRL Rwy 5-23 0