

WAAS CH 90516 W32A	APP CRS 321°	Rwy Ldg 3851 TDZE 1122 Apt Elev 1122
--	------------------------	---

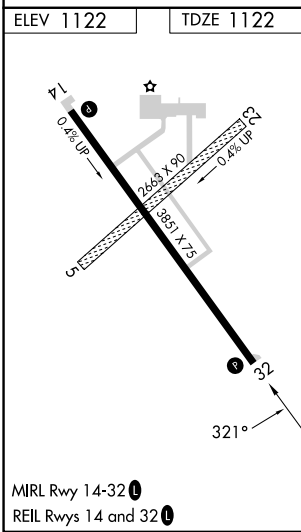
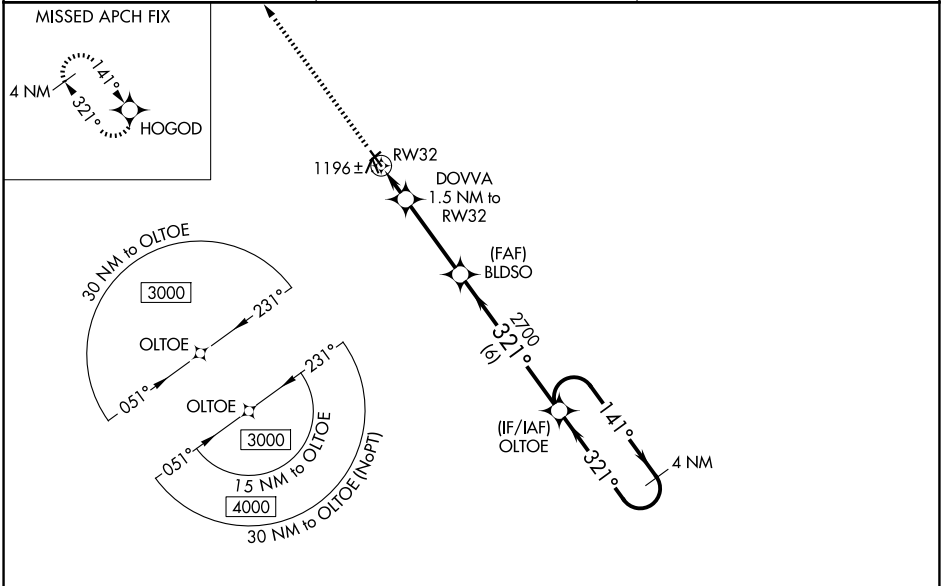
RNAV (GPS) RWY 32

WEBSTER CITY MUNI (EBS)

⚠ For uncompensated Baro-VNAV systems, LNAV/VNAV NA below -17°C (2°F) or above 54°C (130°F). DME/DME RNP-0.3 NA. When local altimeter setting not received, use Clarion altimeter setting and increase all DA 49 feet and all MDA 60 feet. Baro-VNAV and VDP NA when using Clarion altimeter setting. Helicopter visibility reduction below 3/4 SM NA.

MISSED APPROACH: Climb to 3000 direct HOGOD and hold.

AWOS-3 127.825	MINNEAPOLIS CENTER 134.0 288.3	UNICOM 122.8 (CTAF) 0
--------------------------	--	---------------------------------



ELEV 1122	TDZE 1122	<p>3000 HOGOD VGSi and RNAV glidepath not coincident (VGSi Angle 3.00/TCH 32).</p> <p>OLTOE 4 NM Holding Pattern</p> <p>*LNAV only. DOVVA 1.5 NM to RW32 BLD SO 2700 RW32 *1 NM to RW32 1620* 2700 3000 GP 3.00° TCH 40</p>			
CATEGORY	A	B	C	D	
LPV DA	1372-1	250 (300-1)		NA	
LNAV/VNAV DA	1372-1	250 (300-1)		NA	
LNAV MDA	1460-1	338 (400-1)		NA	
CIRCLING	1600-1	478 (500-1)		NA	

NC-3, 14 MAY 2026 to 11 JUN 2026

NC-3, 14 MAY 2026 to 11 JUN 2026