

WAAS CH <b>82026</b> <b>W04A</b>	APP CRS <b>044°</b>	Rwy Idg TDZE Apt Elev	<b>5000</b> <b>1664</b> <b>1664</b>
--	------------------------	-----------------------------	---

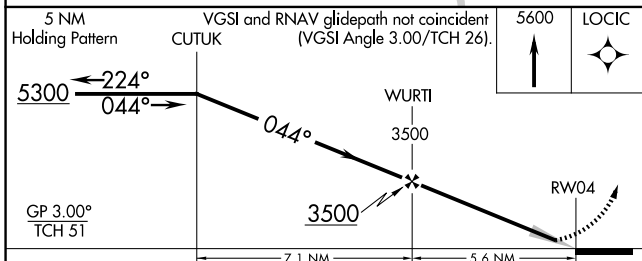
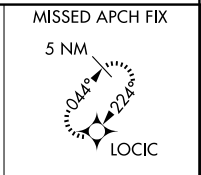
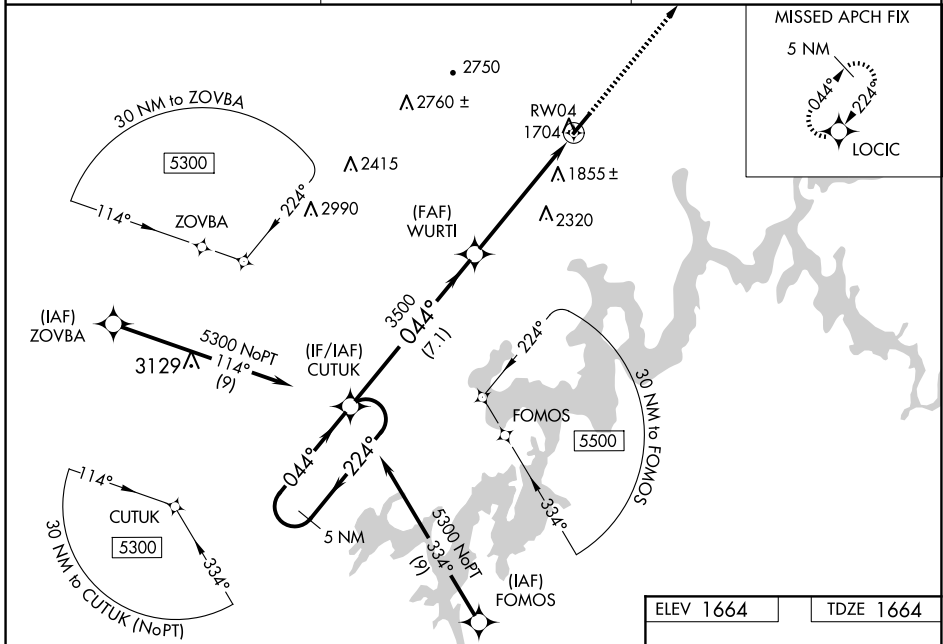
# RNAV (GPS) RWY 4

ROCKWOOD MUNI (R.KW)

**NA** Baro-VNAV NA when using Crossville altimeter setting. For uncompensated Baro-VNAV systems, LNAV/VNAV NA below -18°C (0°F) or above 33°C (91°F). DME/DME RNP-0.3 NA. When local altimeter setting not received, use Crossville altimeter setting: increase DA to 1989 feet and LPV and LNAV/VNAV visibility all Cats ¼ SM; increase all MDA 80 feet and LNAV Cat C and D visibility ½ SM and Circling Cat C visibility ½ SM.

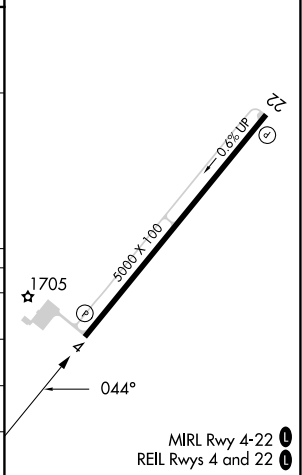
MISSED APPROACH: Climb to 5600 direct LOCIC and hold, continue climb-in-hold to 5600.

AWOS-3 <b>118.775</b>	ATLANTA CENTER <b>133.6 254.3</b>	UNICOM <b>122.8 (CTAF)</b>
--------------------------	--------------------------------------	-------------------------------



ELEV 1664	TDZE 1664
-----------	-----------

CATEGORY	A	B	C	D
LPV DA		1914-¾	250 (300-¾)	
LNAV/VNAV DA		1914-¾	250 (300-¾)	
LNAV MDA	2100-1	436 (500-1)	2100-1¾	436 (500-1¾)
CIRCLING	2100-1 436 (500-1)	2200-1 536 (600-1)	2260-1½ 596 (600-1½)	2780-3 1116 (1200-3)



MIRL Rwy 4-22  
REL Rws 4 and 22

SE-1, 14 MAY 2026 to 11 JUN 2026

SE-1, 14 MAY 2026 to 11 JUN 2026