

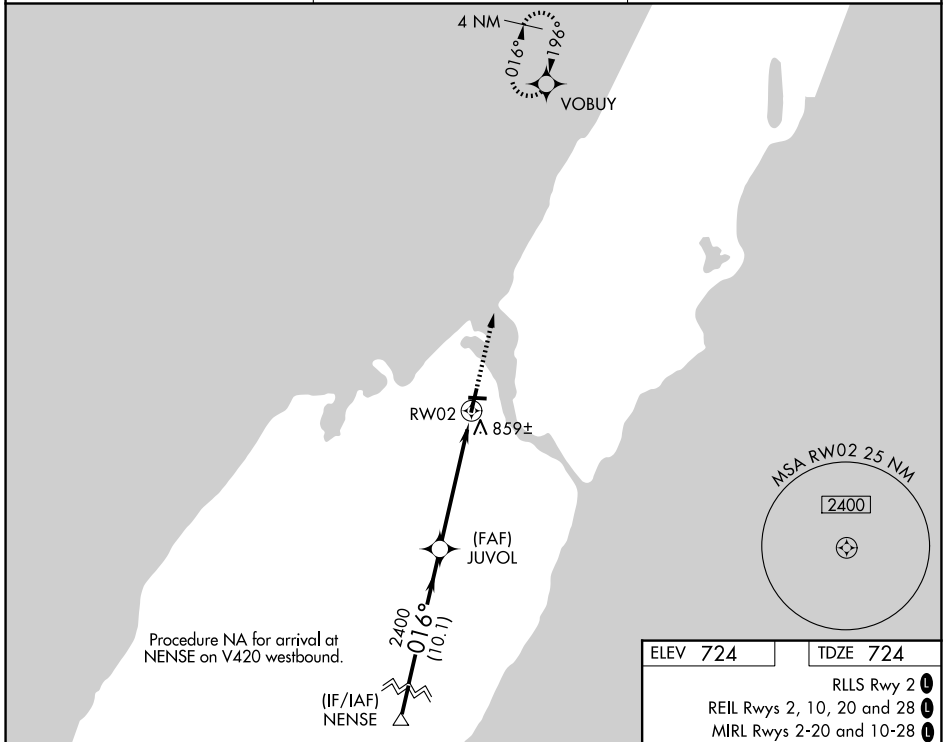
WAAS CH 81904 W02A	APP CRS 016°	Rwy Ldg 4599 TDZE 724 Apt Elev 724
--	------------------------	---

RNAV (GPS) RWY 2

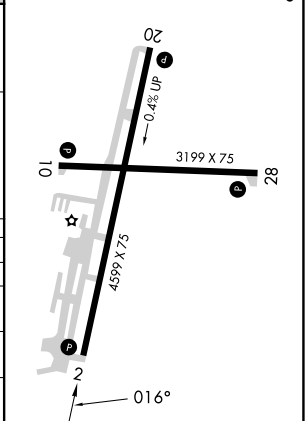
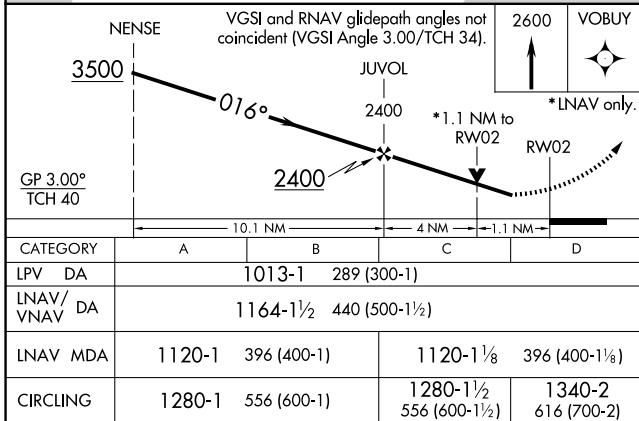
DOOR COUNTY CHERRYLAND (SUE)

RNP APCH.	<p>▼ Rwy 2 helicopter visibility reduction below 3/4 SM NA. For uncompensated Baro-VNAV systems, LNAV/VNAV NA below -16°C or above 54°C.</p> <p>▲ MISSED APPROACH: Climb to 2600 direct VOBUY and hold.</p>
-----------	---

AWOS-3PT 128.325	GREEN BAY APP CON * 119.25 338.2	UNICOM 122.7(CTAF) 0
----------------------------	--	--------------------------------



ELEV 724	TDZE 724
RLLS Rwy 2 1 REIL Rws 2, 10, 20 and 28 1 MIRL Rws 2-20 and 10-28 1	



EC-3, 14 MAY 2026 to 11 JUN 2026

EC-3, 14 MAY 2026 to 11 JUN 2026