

(EDGGE1.EDGGE) 26134

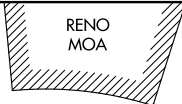
# EDGE ONE DEPARTURE (RNAV)

AL-5416 (FAA)

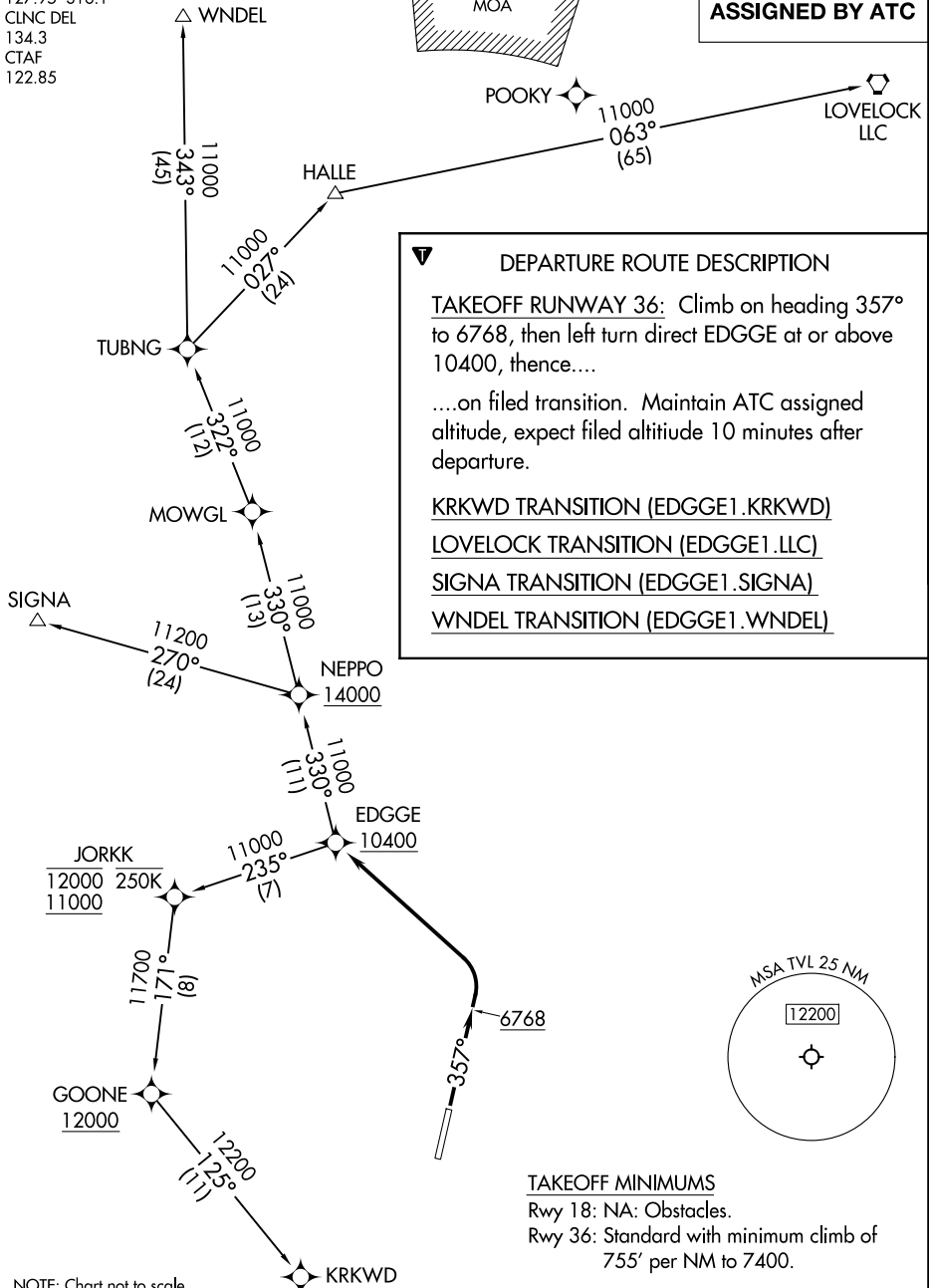
LAKE TAHOE (TVL)  
SOUTH LAKE TAHOE, CALIFORNIA

OAKLAND CENTER  
127.95 316.1  
CLNC DEL  
134.3  
CTAF  
122.85

RNAV 1 - GPS.



**TOP ALTITUDE:  
ASSIGNED BY ATC**



**DEPARTURE ROUTE DESCRIPTION**

**TAKEOFF RUNWAY 36:** Climb on heading 357° to 6768, then left turn direct EDGGE at or above 10400, thence....

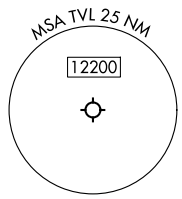
....on filed transition. Maintain ATC assigned altitude, expect filed altitude 10 minutes after departure.

KRKWD TRANSITION (EDGGE1.KRKWD)

LOVELOCK TRANSITION (EDGGE1.LLC)

SIGNA TRANSITION (EDGGE1.SIGNA)

WNDEL TRANSITION (EDGGE1.WNDEL)



**TAKEOFF MINIMUMS**

Rwy 18: NA: Obstacles.

Rwy 36: Standard with minimum climb of 755' per NM to 7400.

NOTE: Chart not to scale.

SW-2, 14 MAY 2026 to 11 JUN 2026

SW-2, 14 MAY 2026 to 11 JUN 2026

# EDGE ONE DEPARTURE (RNAV)

(EDGGE1.EDGGE) 14MAY26

SOUTH LAKE TAHOE, CALIFORNIA  
LAKE TAHOE (TVL)