

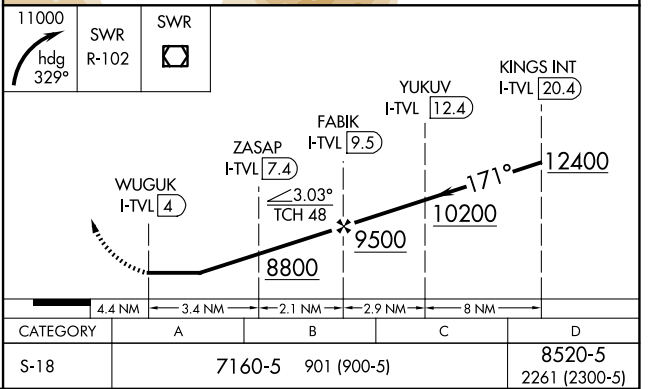
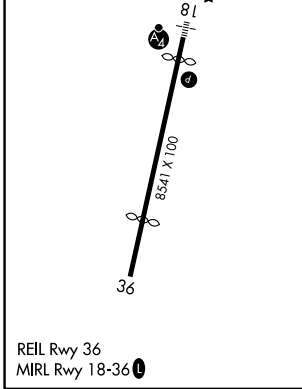
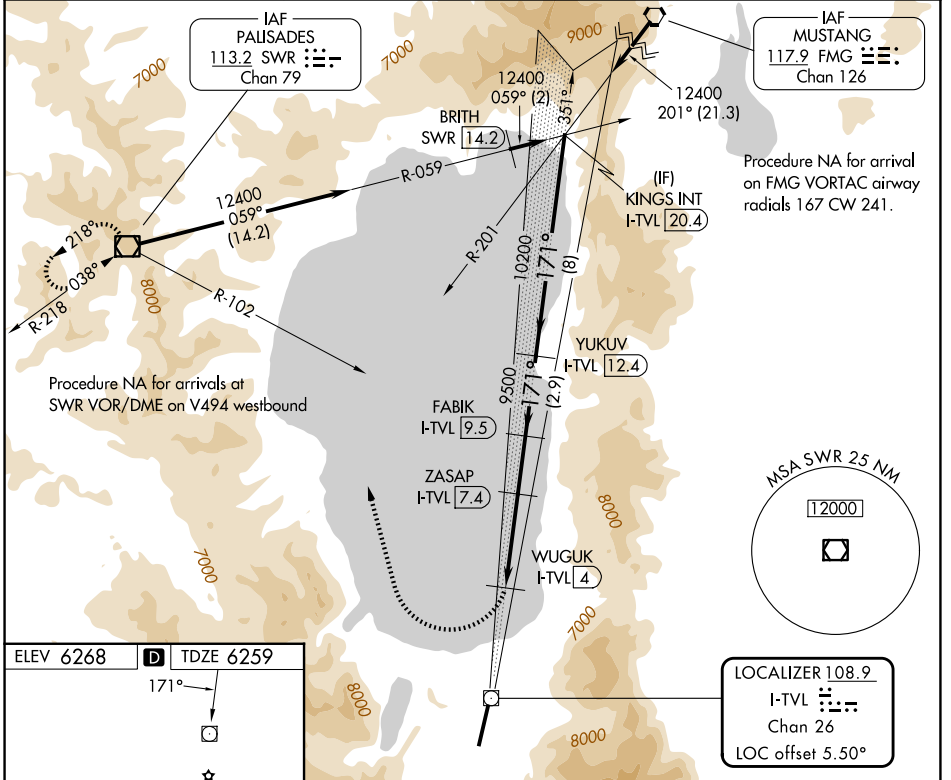
LOC/DME I-TVL 108.9 Chan 26	APP CRS 171°	Rwy Ldg TDZE 7017 6259 Apt Elev 6268
--	------------------------	---

LDA RWY 18

LAKE TAHOE (TVL)

DME required.	MALSF	MISSED APPROACH: Climbing right turn to 11000 on heading 329° and SWR VOR/DME R-102 to SWR VOR/DME and hold.
<p>NA Rwy 18 helicopter visibility reduction below 3/4 SM NA. When local altimeter setting not received, procedure NA.</p> <p>-12°C</p>		

ASOS 124.725	OAKLAND CENTER 127.95 316.1	CTAF 122.85
------------------------	---------------------------------------	-----------------------



SW-2, 14 MAY 2026 to 11 JUN 2026

SW-2, 14 MAY 2026 to 11 JUN 2026