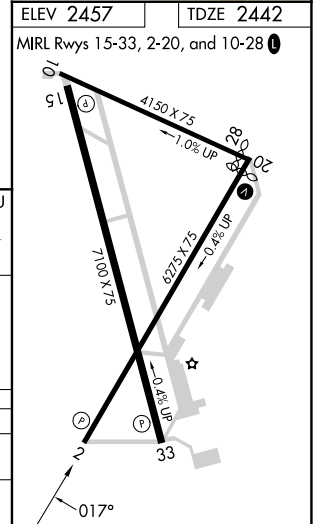
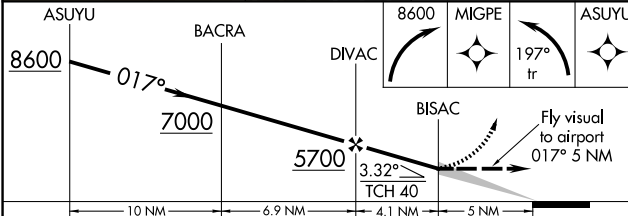
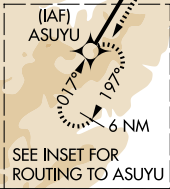
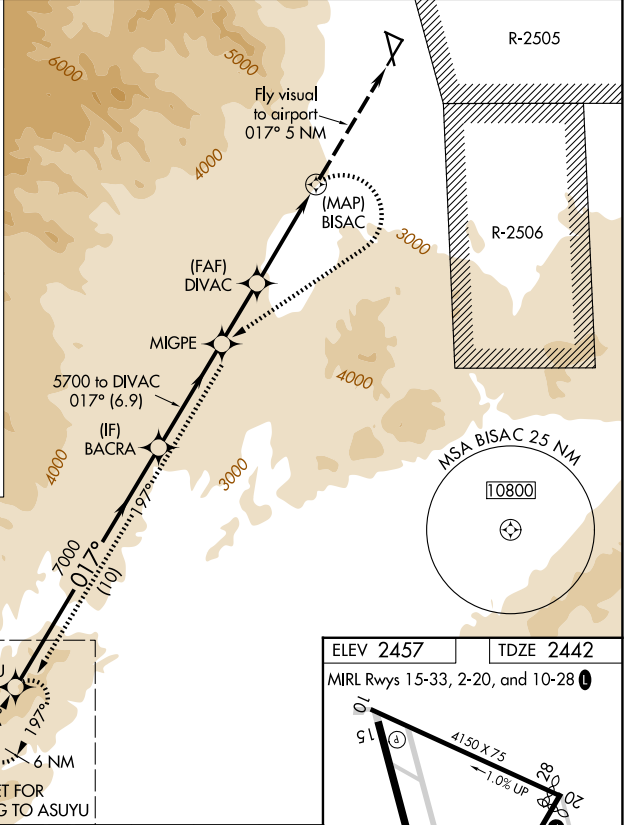
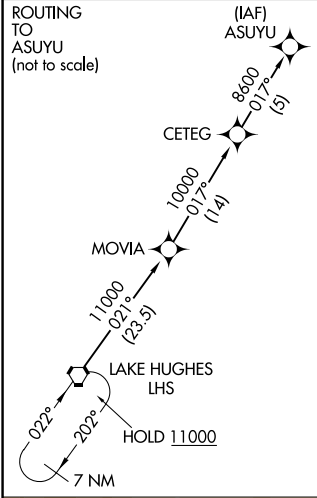


RNAV (GPS) RWY 2 INYOKERN (IYK)

APP CRS 017°	Rwy Ldg TDZE Apt Elev	6275 2442 2457
------------------------	-----------------------------	---

RNP APCH.	MISSED APPROACH: (Do not exceed 165K until SW bound) Climbing right turn to 8600 direct MIGPE then left turn on track 197° to ASUYU and hold.
<p>NA Circling Rwy 10, 33 NA at night. Circling NA east of Rwy 15-33. Circling NA at night west of Rwys 2 and 15. Except for operators with approved weather reporting service, use Mojavave altimeter setting, if not available, procedure NA.</p>	

MHV AWOS-3PT 132.225	JOSHUA APP CON 133.65 348.7	AUNICOM 122.8 (CTAF) 0
--------------------------------	---------------------------------------	----------------------------------



CATEGORY	A	B	C	D
LNVA MDA	4200-3 1758 (1800-3)			
CIRCLING	4200-3	1743 (1800-3)	4780-3 2323 (2400-3)	5640-3 3183 (3200-3)

SW-3, 14 MAY 2026 to 11 JUN 2026

SW-3, 14 MAY 2026 to 11 JUN 2026