

|  |                        |   |
|--|------------------------|---|
| WAAS<br>CH <b>53625</b><br><b>W35A</b> | APP CRS<br><b>347°</b> | Rwy Idg <b>5000</b><br>TDZE <b>1261</b><br>Apt Elev <b>1261</b> |
|--|------------------------|---|

# RNAV (GPS) RWY 35

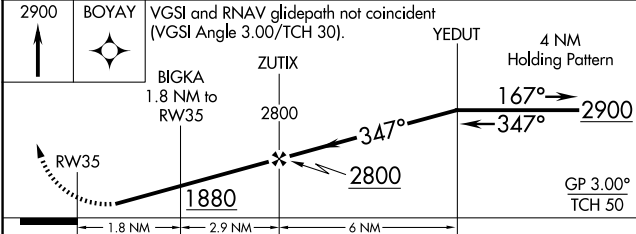
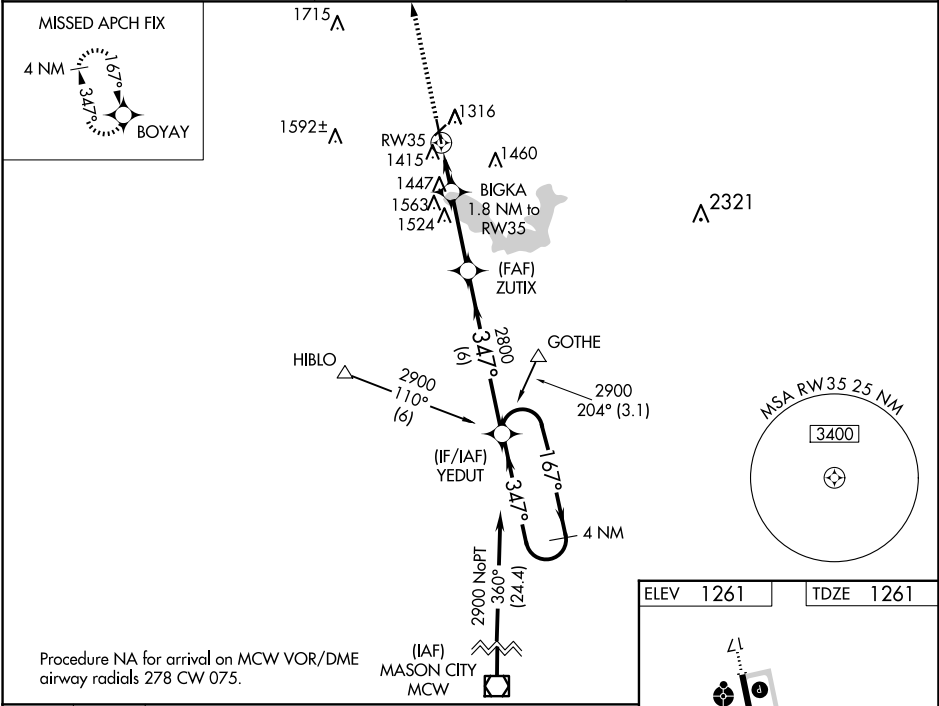
ALBERT LEA MUNI (A.E.L.)

RNP APCH-GPS.

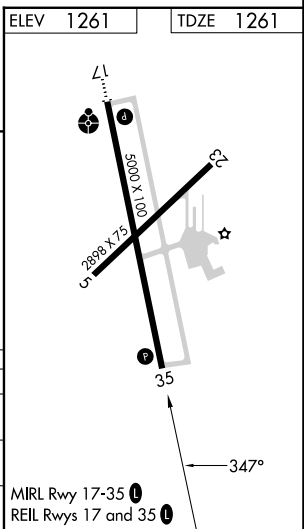
**⚠** Baro-VNAV NA when using Austin altimeter setting. For uncompensated Baro-VNAV systems, LNAV/VNAV NA below -28°C or above 36°C. Rwy 35 helicopter visibility reduction below 3/4 SM NA. When local altimeter setting not received, use Austin altimeter setting: increase LPV DA to 1559 feet and LNAV/VNAV DA to 1624 feet; increase all MDAs 60 feet.

MISSED APPROACH: Climb to 2900 direct BOYAY and hold.

|                            |   |                               |
|----------------------------|---|-------------------------------|
| AWOS-3PT<br><b>119.575</b> | ROCHESTER APP CON *<br><b>119.8 251.125</b> | UNICOM<br><b>123.0 (CTAF)</b> |
|----------------------------|---|-------------------------------|



| CATEGORY     | A                  | B                          | C | D |
|--------------|--------------------|----------------------------|---|---|
| LPV DA       | 1511-1             | 250 (300-1)                |   |   |
| LNAV/VNAV DA | 1576-1             | 315 (400-1)                |   |   |
| LNAV MDA     | 1720-1 459 (500-1) | 1720-1 3/8 459 (500-1 3/8) |   |   |



NC-1, 14 MAY 2026 to 11 JUN 2026

NC-1, 14 MAY 2026 to 11 JUN 2026