

LOC/DME I-MAY <b>108.55</b> Chan <b>22</b> (Y)	APP CRS <b>070°</b>	Rwy Ldg TDZE Apt Elev	<b>5001</b> <b>1307</b> <b>1307</b>
--	------------------------	-----------------------------	---

# ILS or LOC RWY 7

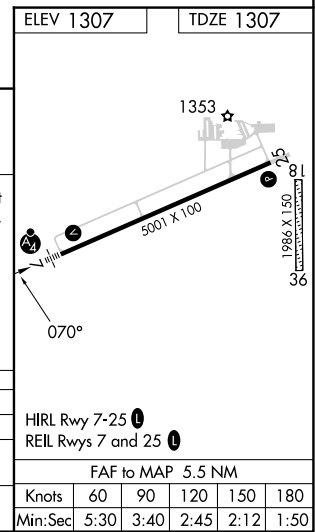
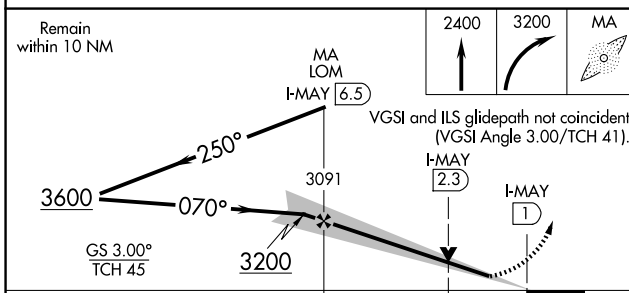
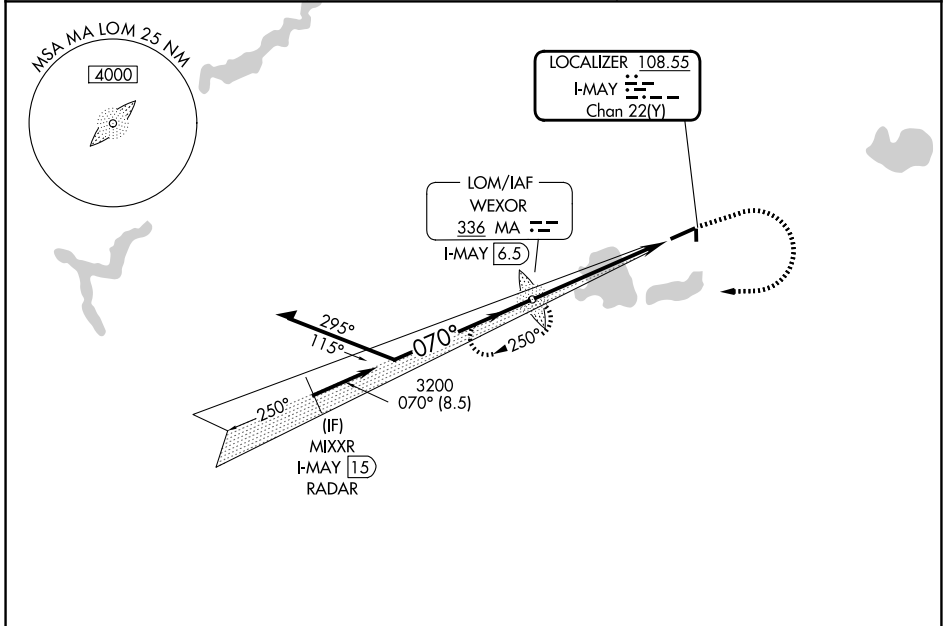
WEXFORD COUNTY (CAD)

ADF required.  
RADAR required for procedure entry.

**MALSF**

MISSED APPROACH: Climb to 2400 then climbing right turn to 3200 direct WEXOR. LOM/I-MAY 6.5 DME and hold.

AWOS-3P <b>128.325</b>	MINNEAPOLIS CENTER <b>132.9 338.3</b>	UNICOM <b>122.8</b> (CTAF) <b>0</b>
---------------------------	--	--



CATEGORY	A	B	C	D
S-ILS 7		1557- <sup>3</sup> / <sub>4</sub>	250 (300- <sup>3</sup> / <sub>4</sub> )	
S-LOC 7	1780- <sup>3</sup> / <sub>4</sub>	473 (500- <sup>3</sup> / <sub>4</sub> )	1780-1 <sup>1</sup> / <sub>8</sub>	473 (500-1 <sup>1</sup> / <sub>8</sub> )
CIRCLING	1820-1 513 (600-1)	1840-1 533 (600-1)	1860-1 <sup>1</sup> / <sub>2</sub> 553 (600-1 <sup>1</sup> / <sub>2</sub> )	2060-2 <sup>1</sup> / <sub>2</sub> 753 (800-2 <sup>1</sup> / <sub>2</sub> )

EC-1, 14 MAY 2026 to 11 JUN 2026

EC-1, 14 MAY 2026 to 11 JUN 2026