

WAAS CH 50236 W13A	APP CRS 126°	Rwy Ldg TDZE Apt Elev	5007 975 975
--	------------------------	-----------------------------	---

RNAV (GPS) RWY 13

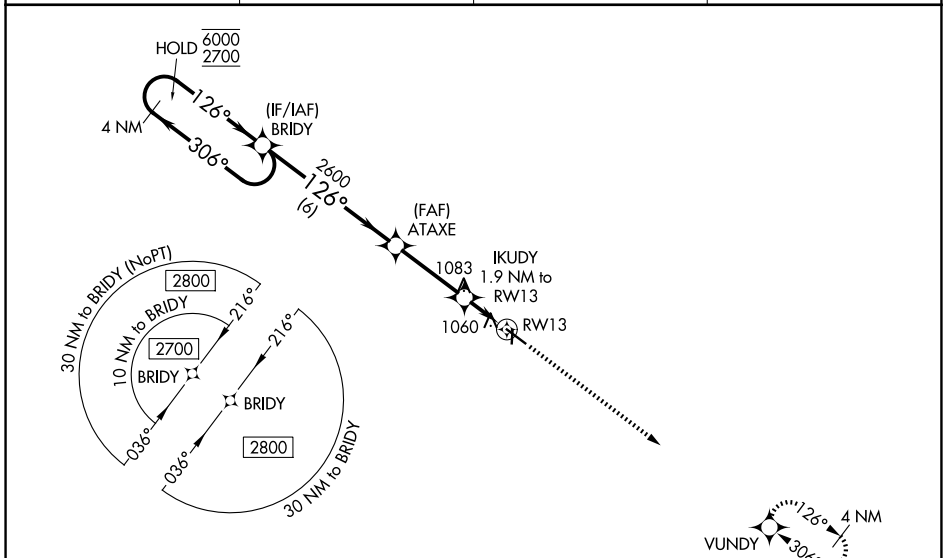
MARSHALLTOWN MUNI (MIW)

RNP APCH - GPS.

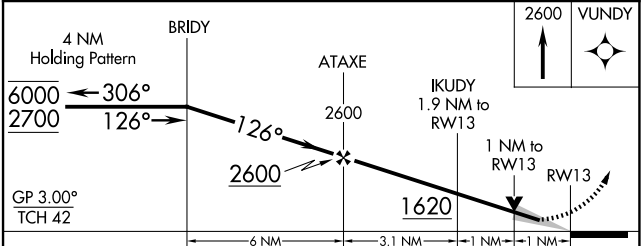
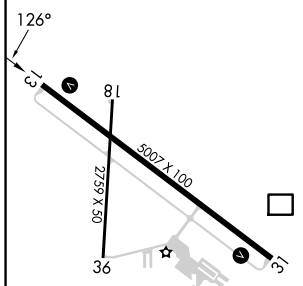
⚠ Baro-VNAV and VDP NA when using GGI altimeter setting. Circling Rwy 18, 36 NA at night. For uncompensated Baro-VNAV systems, LNAV/VNAV NA below -21°C or above 54°C. When local altimeter setting not received, use GGI altimeter setting and increase LPV DA to 1289 feet and all visibilities 1/8 SM. Increase LNAV/VNAV DA to 1289 feet and all visibilities 1/8 SM. Increase all MDAs 80 feet and LNAV visibility Cat C/D 1/4 SM, and Circling visibility Cat D 1/4 SM.

MISSED APPROACH: Climb to 2600 direct VUNDY and hold.

ASOS 128.325	DES MOINES APP CON * 120.9	CLNC DEL 120.9	UNICOM 122.8 (CTAF) 0
------------------------	--------------------------------------	--------------------------	---------------------------------



ELEV 975	TDZE 975
----------	----------



CATEGORY	A	B	C	D
LPV DA		1225-3/4	250 (300-3/4)	
LNAV/VNAV DA		1225-3/4	250 (300-3/4)	
LNAV MDA		1320-1	345 (400-1)	
CIRCLING	1400-1 425 (500-1)	1440-1 465 (500-1)	1460-1 1/2 485 (500-1 1/2)	1840-2 3/4 865 (900-2 3/4)

MIRL Rwy 13-31 and 18-36 **0**
REIL Rwy 13 and 31 **0**

NC-3, 14 MAY 2026 to 11 JUN 2026

NC-3, 14 MAY 2026 to 11 JUN 2026