

WAAS CH <b>48936</b> <b>W31A</b>	APP CRS <b>306°</b>	Rwy Ldg TDZE Apt Elev	<b>5007</b> <b>973</b> <b>975</b>
--	------------------------	-----------------------------	---

# RNAV (GPS) RWY 31

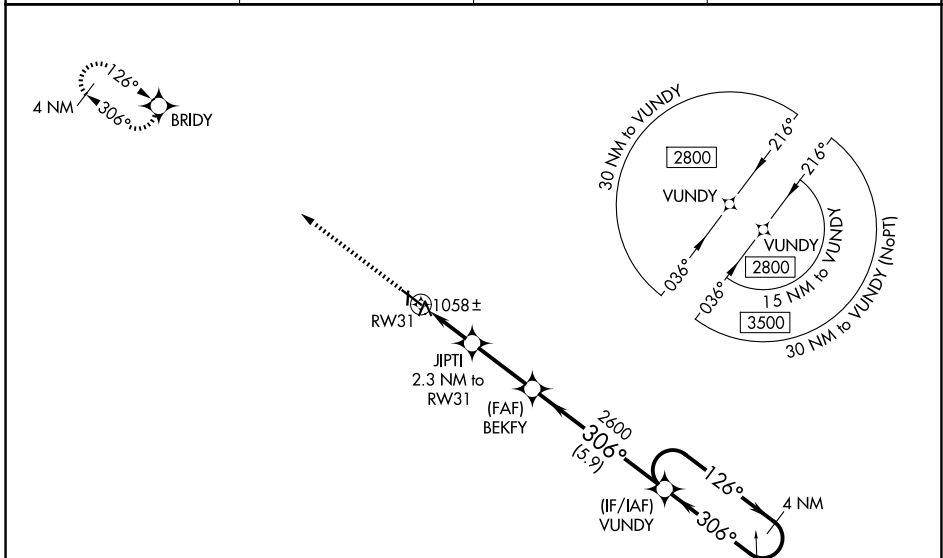
MARSHALLTOWN MUNI (MIW)

RNP APCH - GPS.

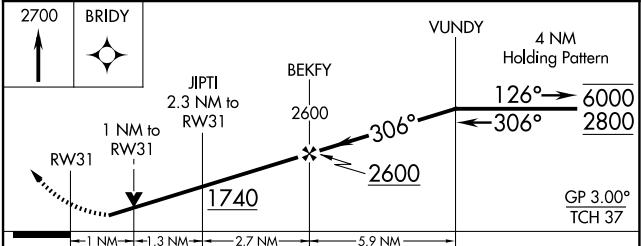
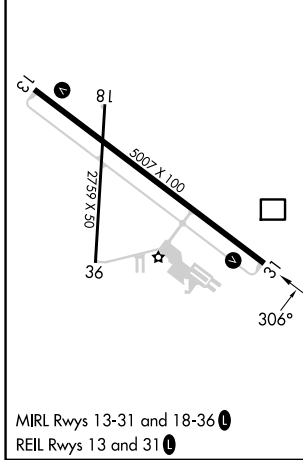
**⚠** Baro-VNAV and VDP NA when using GGI altimeter setting. Rwy 31 helicopter visibility reduction below 3/4 SM NA. Circling Rwy 18, 36 NA at night. For uncompensated Baro-VNAV systems, LNAV/VNAV NA below -22°C or above 54°C. When local altimeter setting not received, use GGI altimeter setting and increase LPV DA to 1287 feet and all visibilities 1/8 SM. Increase LNAV/VNAV DA to 1287 feet and all visibilities 1/8 SM. Increase all MDAs 80 feet and LNAV visibility Cat C/D 1/4 SM, and Circling visibility Cat D 1/4 SM.

MISSED APPROACH: Climb to 2700 direct BRIDY and hold.

ASOS <b>128.325</b>	DES MOINES APP CON * <b>120.9</b>	CLNC DEL <b>120.9</b>	UNICOM <b>122.8 (CTAF) 0</b>
------------------------	--------------------------------------	--------------------------	---------------------------------



ELEV 975	TDZE 973
----------	----------



CATEGORY	A	B	C	D
LPV DA		1223-3/4	250 (300-3/4)	
LNAV/VNAV DA		1223-3/4	250 (300-3/4)	
LNAV MDA		1320-1	347 (400-1)	
CIRCLING	1400-1 425 (500-1)	1440-1 465 (500-1)	1460-1 1/2 485 (500-1 1/2)	1840-2 3/4 865 (900-2 3/4)

NC-3, 14 MAY 2026 to 11 JUN 2026

NC-3, 14 MAY 2026 to 11 JUN 2026