

LOC/DME I-SME <b>109.3</b>	APP CRS <b>048°</b>	Rwy Ldg TDZE Apt Elev	<b>5287</b> <b>927</b> <b>927</b>
Chan <b>30</b>			

# ILS or LOC RWY 5

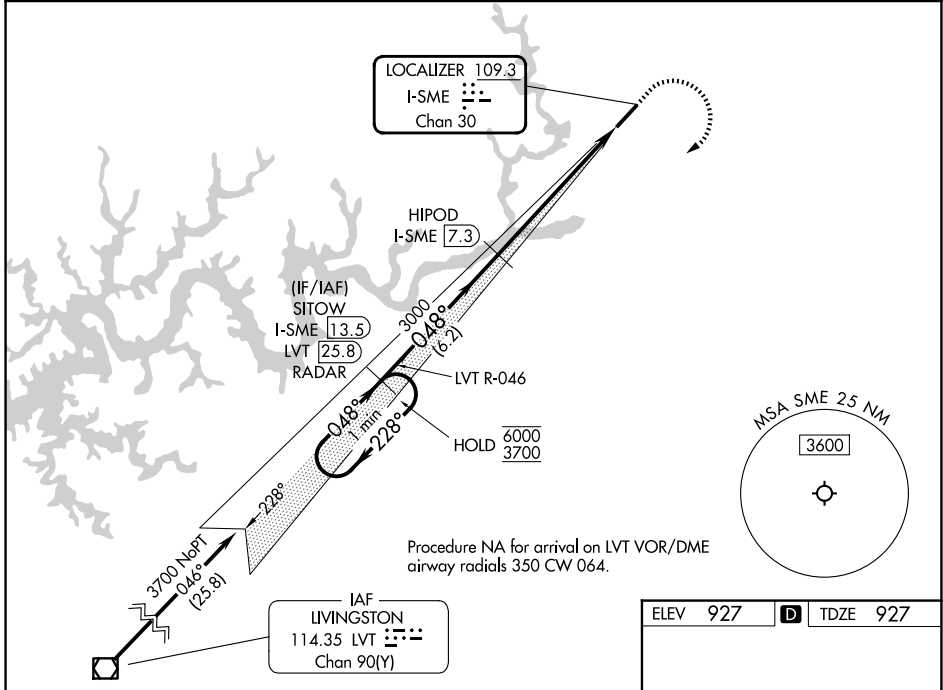
LAKE CUMBERLAND RGNL (SME)

**DME required.**

**⚠** Rwy 5 helicopter visibility reduction below 3/4 SM NA. VDP NA when using EKQ altimeter setting. When local altimeter setting not received, use EKQ altimeter setting and increase S-ILS 5 DA to 1526 feet and all visibilities 1/2 SM; increase all MDAs 60 feet and S-LOC 5 visibility Cat C/D 1/2 SM, and Circling visibility Cat B 1/2 SM. GS unusable for coupled approach below 1620.

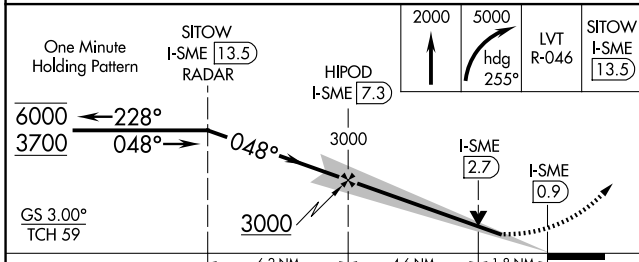
**MISSED APPROACH:** Climb to 2000 then climbing right turn to 5000 on heading 255° and on LVT VOR/DME R-046 to SITOW/13.5 DME/RADAR and hold, continue climb-in-hold to 5000.

AWOS-3 <b>120.05</b>	INDIANAPOLIS CENTER <b>124.625 371.925</b>	UNICOM <b>122.8 (CTAF) 0</b>
-------------------------	---	---------------------------------

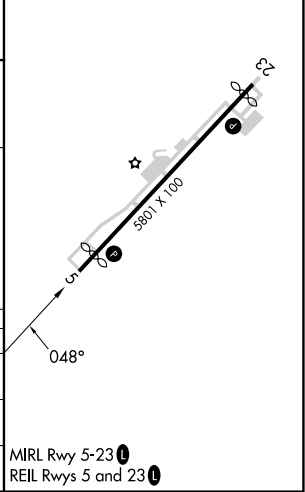


Procedure NA for arrival on LVT VOR/DME airway radials 350 CW 064.

ELEV 927	<b>D</b>	TDZE 927
----------	----------	----------



CATEGORY	A	B	C	D
S-ILS 5	1482-1 1/8		555 (600-1%)	
S-LOC 5	1540-1	613 (700-1)	1540-1 3/4	613 (700-1 3/4)
CIRCLING	1580-1 653 (700-1)	1700-1 773 (800-1)	2100-3	1173 (1200-3)



SE-1, 14 MAY 2026 to 11 JUN 2026

SE-1, 14 MAY 2026 to 11 JUN 2026