

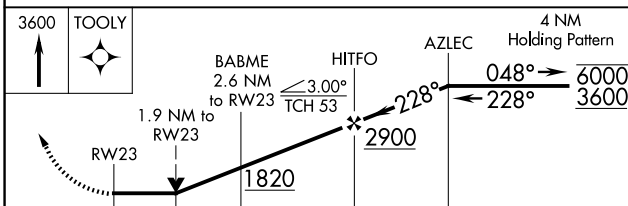
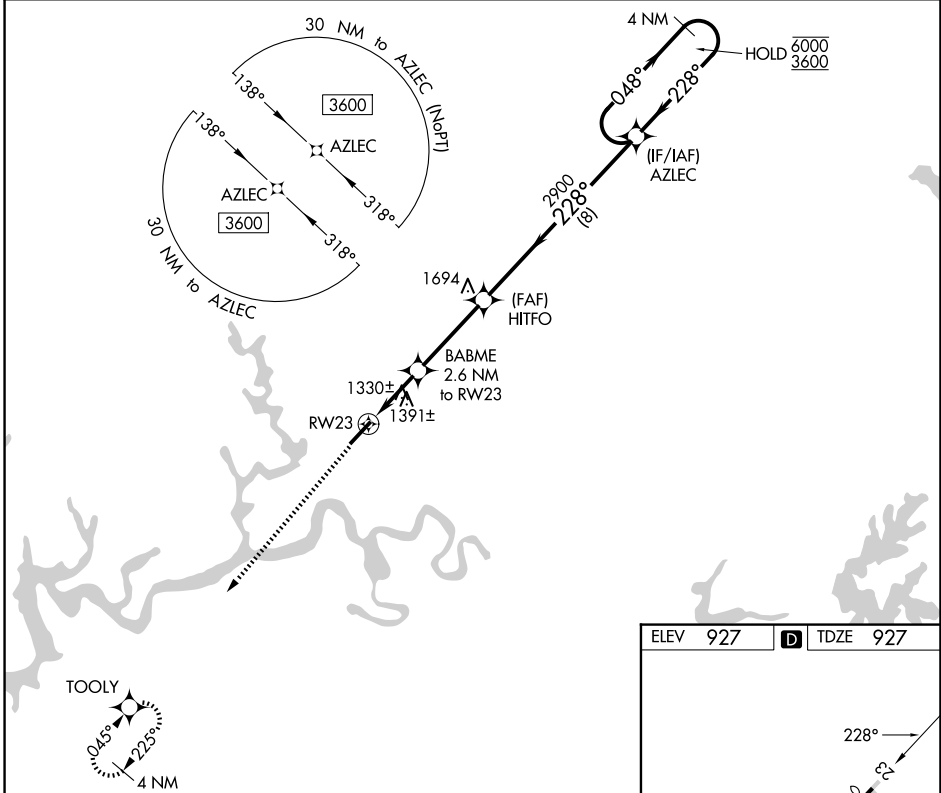
WAAS CH 53641 W23A	APP CRS 228°	Rwy Ldg TDZE Apt Elev	5927 927 927
--	------------------------	-----------------------------	---

RNAV (GPS) RWY 23

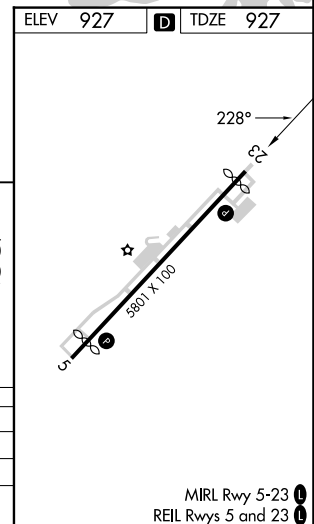
LAKE CUMBERLAND RGNL (SME)

RNP APCH - GPS.	<p>⚠ Rwy 23 helicopter visibility reduction below $\frac{3}{4}$ SM NA. When local altimeter setting not received, use Monticello altimeter setting and increase all MDAs 60 feet and LNAV visibility Cat B/C/D $\frac{1}{2}$ SM, and LP visibility Cat C/D $\frac{1}{8}$ SM, and Circling visibility Cat B $\frac{1}{4}$ SM. VDP NA when using Monticello altimeter setting.</p>	MISSED APPROACH: Climb to 3600 direct TOOLY and hold.
-----------------	---	---

AWOS-3 120.05	INDIANAPOLIS CENTER 124.625 371.925	UNICOM 122.8 (CTAF) 📻
-------------------------	---	--



CATEGORY	A	B	C	D
LP MDA	1580-1	653 (700-1)	1580-1 $\frac{7}{8}$	653 (700-1 $\frac{7}{8}$)
LNAV MDA	1660-1	733 (800-1)	1660-2	733 (800-2)
CIRCLING	1660-1 733 (800-1)	1700-1 773 (800-1)	2100-3	1173 (1200-3)



SE-1, 14 MAY 2026 to 11 JUN 2026

SE-1, 14 MAY 2026 to 11 JUN 2026