

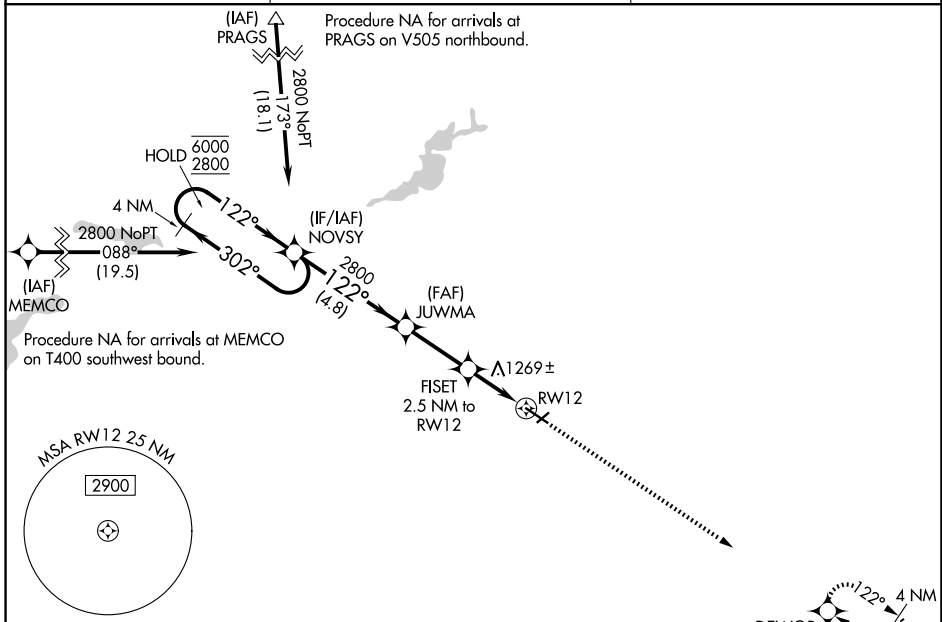
WAAS CH 82627 W12A	APP CRS 122°	Rwy Ldg TDZE Apt Elev	5500 1127 1145
--	------------------------	-----------------------------	---

RNAV (GPS) RWY 12

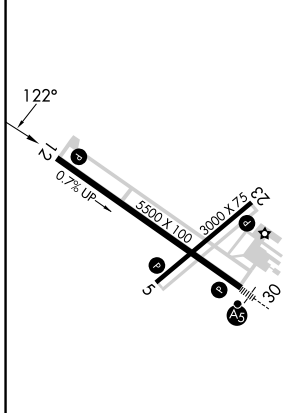
OWATONNA DEGNER RGNL (OWA)

RNP APCH - GPS.	MISSED APPROACH: Climb to 2900 direct DEWOR and hold.
<p>⚠ Rwy 12 helicopter visibility reduction below 3/4 SM NA. For uncompensated Baro-VNAV systems, LNAV/VNAV NA below -17°C or above 54°C.</p>	

AWOS-3 128.325	ROCHESTER APP CON ★ 119.8 251.125	UNICOM 122.7 (CTAF)
--------------------------	---	-------------------------------



ELEV 1145	TDZE 1127
-----------	-----------



	A	B	C	D
LPV DA	1420-7/8 293 (300-7/8)			
LNAV/VNAV DA	1400-7/8 273 (300-7/8)			
LNAV MDA	1520-1 393 (400-1)		1520-1 1/8 393 (400-1 1/8)	
CIRCLING	1640-1 495 (500-1)	1700-1 555 (600-1)	1720-1 1/2 575 (600-1 1/2)	1880-2 1/4 735 (800-2 1/4)

- MIRL Rwy 5-23
- REIL Rws 5, 12, and 23
- HIRL Rwy 12-30

NC-1, 14 MAY 2026 to 11 JUN 2026

NC-1, 14 MAY 2026 to 11 JUN 2026