

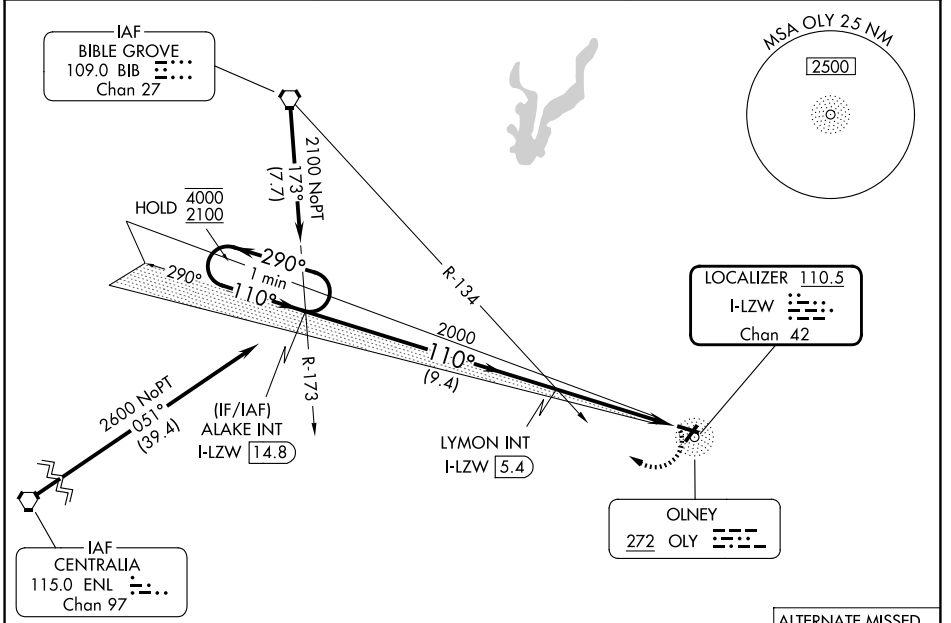
LOC/DME I-LZW 110.5 Chan 42	APP CRS 110°	Rwy Ldg TDZE Apt Elev	4099 482 482
---	------------------------	-----------------------------	---

LOC RWY 11

OLNEY-NOBLE (OLY)

<p>AWOS-3 119.275</p>		<p>KANSAS CITY CENTER 124.3 269.15</p>	<p>UNICOM 123.0 (CTAF)</p>
---	--	--	--

MISSED APPROACH: Climbing right turn to 2400 on heading 290° and BIB VORTAC R-173 to ALAKE INT/I-LZW LOC/DME 14.8 DME and hold.



ELEV 482	TDZE 482
REIL Rwy 4 and 11 MIRL Rwy 4-22 and 11-29	
FAF to MAP 4.6 NM	
Knots	60 90 120 150 180
Min:Sec	4:36 3:04 2:18 1:50 1:32

One Minute Holding Pattern VGSIs and descent angles not coincident (VGSIs Angle 3.00/TCH 22).		2400 hdg 290°	BIB R-173 ALAKE INT	
ALAKE INT I-LZW 14.8 LYMON INT I-LZW 5.4		I-LZW 2.1 I-LZW 0.8		
4000 2100 ← 290° → 110° → 110°		2000 * 3.03° TCH 45		
9.4 NM		3.3 NM	1.3 NM	
CATEGORY	A	B	C	D
S-11	920-1 438 (500-1)	920-1 438 (500-1)	920-1 1/4 438 (500-1 1/4)	438 (500-1 1/4)
CIRCLING	920-1 438 (500-1)	940-1 458 (500-1)	960-1 1/2 478 (500-1 1/2)	1180-2 1/4 698 (700-2 1/4)

EC-3, 14 MAY 2026 to 11 JUN 2026

EC-3, 14 MAY 2026 to 11 JUN 2026