

WAAS CH <b>56528</b> <b>W23A</b>	APP CRS <b>230°</b>	Rwy Ldg <b>3741</b>
		TDZE <b>1041</b>
		Apt Elev <b>1041</b>

# RNAV (GPS) RWY 23

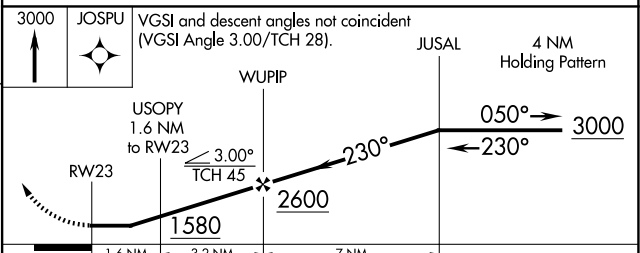
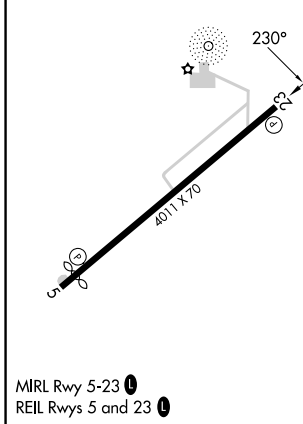
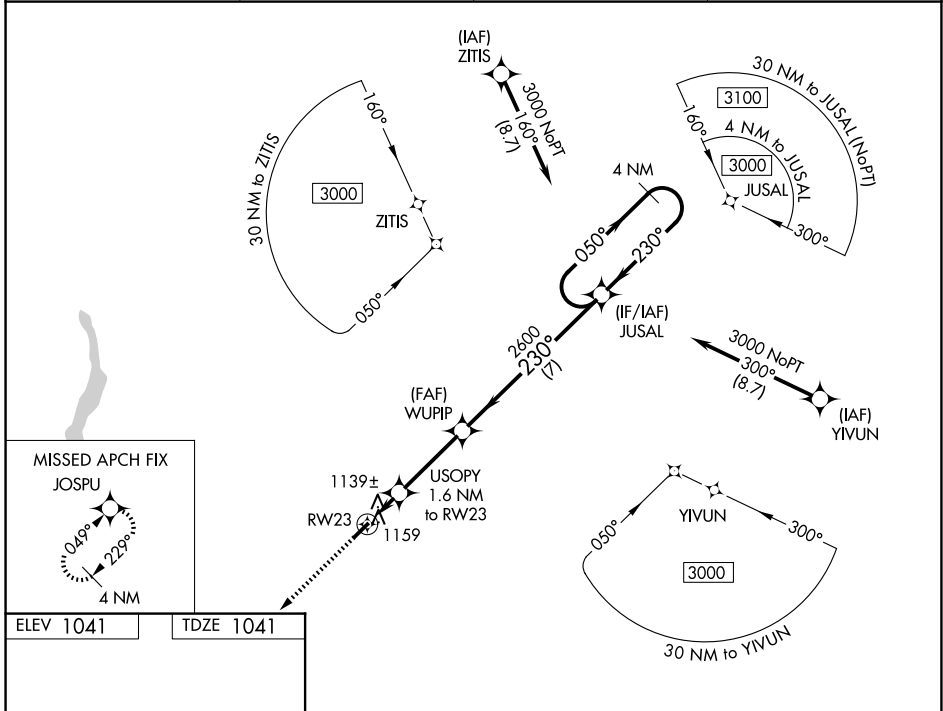
MIAMI UNIVERSITY (OXD)

RNP APCH - GPS.

**⚠ NA** When Circling to Rwy 5 at night, operational VGSI required, remain on or above VGSI glidepath until threshold. Rwy 23 helicopter visibility reduction below 3/4 SM NA. When local altimeter setting not received, use Covington altimeter setting and increase all MDA 100 feet, increase LP Cat C visibility 3/8 mile, increase LNAV and Circling Cat C visibility 1/4 mile.

**MISSED APPROACH:**  
Climb to 3000 direct JOSPU and hold.

AWOS-3PT <b>118.625</b>	CINCINNATI APP CON <b>121.0 254.25</b>	UNICOM <b>122.8 (CTAF)</b>	<b>122.9</b> <b>0</b>
----------------------------	---	-------------------------------	-----------------------



CATEGORY	A	B	C	D
LP MDA	1400-1		359 (400-1)	NA
LNAV MDA	1420-1	379 (400-1)	1420-1/8 379 (400-1/8)	NA
CIRCLING	1460-1 419 (500-1)	1600-1 559 (600-1)	1600-1/2 559 (600-1/2)	NA

OXFORD, OHIO  
Orig-B 06OCT22

39°30'N-84°47'W

# MIAMI UNIVERSITY (OXD) RNAV (GPS) RWY 23

EC-2, 14 MAY 2026 to 11 JUN 2026

EC-2, 14 MAY 2026 to 11 JUN 2026