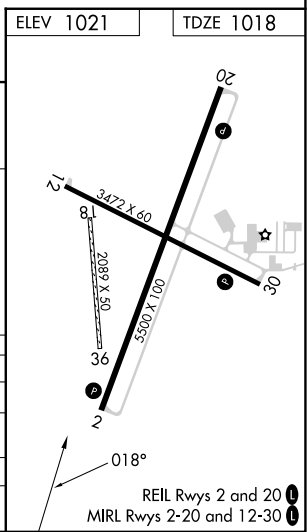
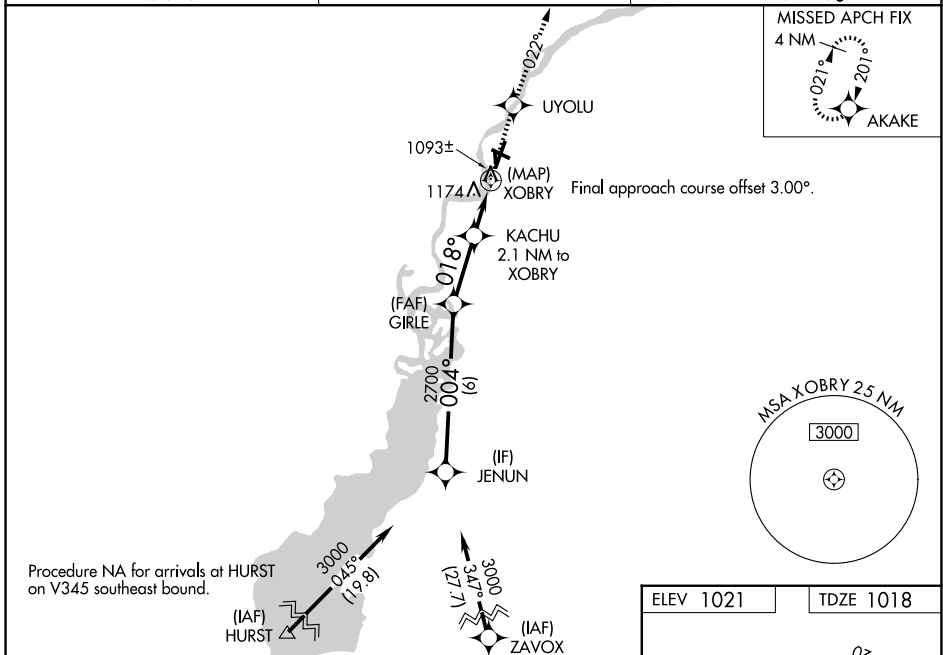


WAAS CH 77731 W02A	APP CRS 018°	Rwy Ldg TDZE Apt Elev	5500 1018 1021
--	------------------------	-----------------------------	---

RNAV (GPS) RWY 2

ALEXANDER FLD SOUTH WOOD COUNTY (ISW)

RNP APCH - GPS.		UNICOM 122.8 (CTAF) 0	
<p>▼ Circling NA to Rwys 18 and 36. Circling Rwy 20, 30 NA at night. Baro-VNAV and VDP NA when using Stevens Point altimeter setting. Rwy 2 helicopter visibility reduction below $\frac{3}{4}$ SM NA. For uncompensated Baro-VNAV systems, LNAV/VNAV NA below -17°C or above 54°C. When local altimeter setting not received, use Stevens Point altimeter setting; increase LPV DA to 1351 feet; increase LNAV/VNAV DA to 1546 feet and all visibilities $\frac{1}{8}$ SM; increase all MDAs 60 feet, LNAV Cat C and D visibilities $\frac{1}{8}$ SM and Circling Cat C and D visibilities $\frac{1}{4}$ SM.</p>		<p>MISSED APPROACH: Climb to 3000 direct UYOLU and on track 022° to AKAKE and hold.</p>	
ASOS 126.575	MINNEAPOLIS CENTER 124.4 317.7		



VGSI and RNAV glidepath not coincident (VGSI Angle 3.00/TCH 35).

JENUN	GIRLE	KACHU	UYOLU	AKAKE
3000	2700	1880	3000	tr 022°
GP 3.00° TCH 50				
6 NM		2.6 NM		
		1.4		
		0.7		
		0.5		

CATEGORY	A	B	C	D
LPV DA	1298-1		280 (300-1)	
LNAV/VNAV DA	1493-1 $\frac{3}{8}$		475 (500-1 $\frac{3}{8}$)	
LNAV MDA	1440-1	422 (500-1)	1440-1 $\frac{1}{4}$	422 (500-1 $\frac{1}{4}$)
CIRCLING	1480-1 459 (500-1)	1560-1 539 (600-1)	1740-2 719 (800-2)	1800-2 $\frac{1}{2}$ 779 (800-2 $\frac{1}{2}$)

EC-3, 14 MAY 2026 to 11 JUN 2026

EC-3, 14 MAY 2026 to 11 JUN 2026