

GIFFA ONE DEPARTURE

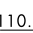
AL-5433 (FAA)

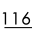
LA PORTE MUNI (T41)


LA PORTE, TEXAS

CLNC DEL 125.6
CTAF 122.7
HOUSTON DEP CON 134.45 284.0

CEDAR CREEK
114.8 CQY 
Chan 95

LEONA
110.8 LOA 
Chan 45

DAISETTA
116.9 DAS 
Chan 116

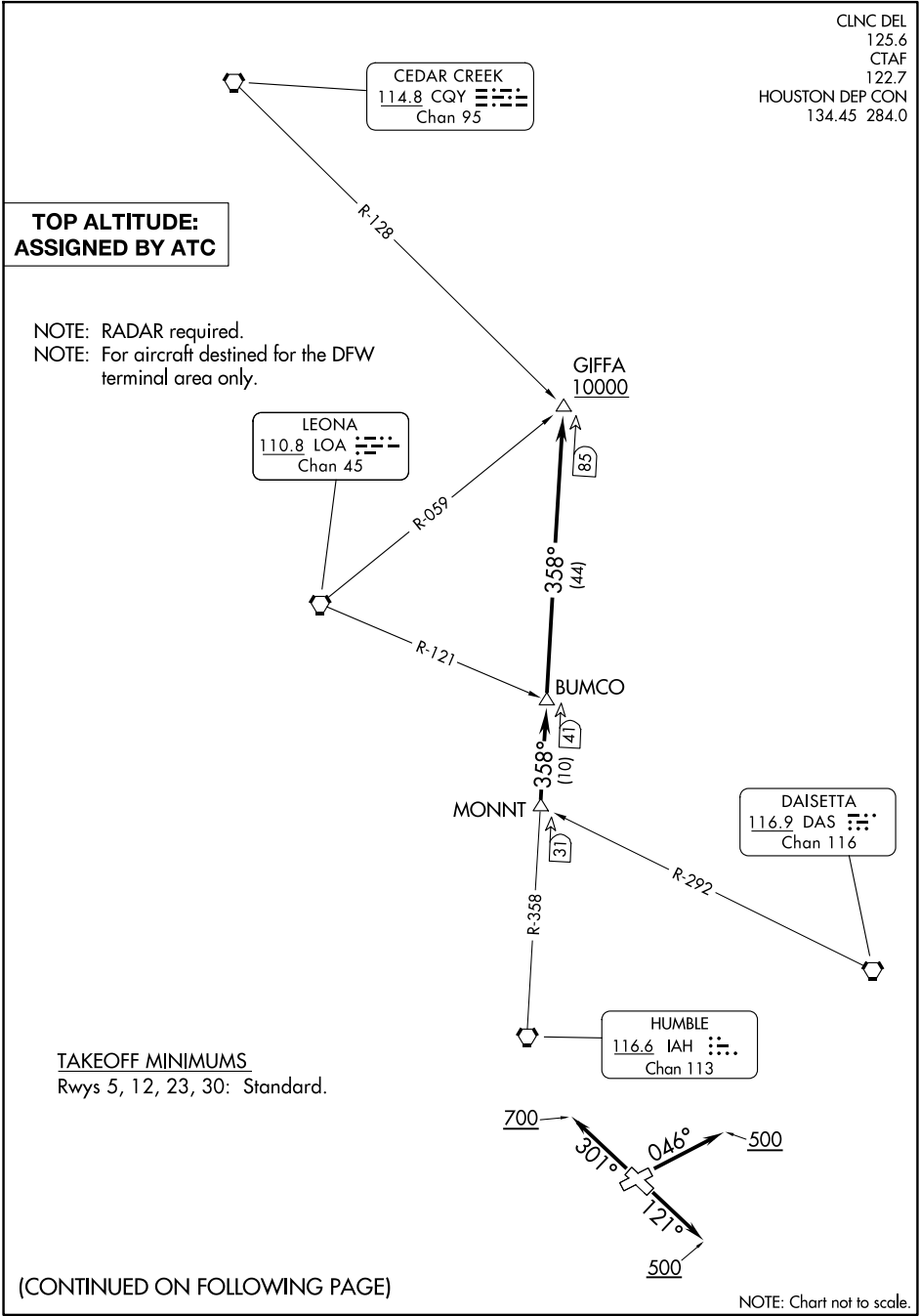
HUMBLE
116.6 IAH 
Chan 113

**TOP ALTITUDE:
ASSIGNED BY ATC**

NOTE: RADAR required.
NOTE: For aircraft destined for the DFW terminal area only.

SC-5, 14 MAY 2026 to 11 JUN 2026

SC-5, 14 MAY 2026 to 11 JUN 2026



TAKEOFF MINIMUMS
Rwys 5, 12, 23, 30: Standard.

(CONTINUED ON FOLLOWING PAGE)

NOTE: Chart not to scale.

GIFFA ONE DEPARTURE

LA PORTE, TEXAS

LA PORTE MUNI (T41)



DEPARTURE ROUTE DESCRIPTION

TAKEOFF RUNWAY 5: Climb on heading 046° to 500 before turning. When entering controlled airspace, climb on assigned heading for RADAR vectors to MONNT INT. Maintain ATC assigned altitude. Expect filed altitude 10 minutes after departure, thence. . . .

TAKEOFF RUNWAY 12: Climb on heading 121° to 500 before turning. When entering controlled airspace, climb on assigned heading for RADAR vectors to MONNT INT. Maintain ATC assigned altitude. Expect filed altitude 10 minutes after departure, thence. . . .

TAKEOFF RUNWAY 23: When entering controlled airspace, climb on assigned heading for RADAR vectors to MONNT INT. Maintain ATC assigned altitude. Expect filed altitude 10 minutes after departure, thence. . . .

TAKEOFF RUNWAY 30: Climb on heading 301° to 700 before turning. When entering controlled airspace, climb on assigned heading for RADAR vectors to MONNT INT. Maintain ATC assigned altitude. Expect filed altitude 10 minutes after departure, thence. . . .

. . . . on IAH R-358 to cross GIFFA INT at or above 10000.

SC-5, 14 MAY 2026 to 11 JUN 2026

SC-5, 14 MAY 2026 to 11 JUN 2026