

WAAS CH <b>61214</b> <b>W11A</b>	APP CRS <b>110°</b>	Rwy Ldg TDZE Apt Elev	<b>5101</b> <b>1730</b> <b>1730</b>
--	------------------------	-----------------------------	---

# RNAV (GPS) RWY 11

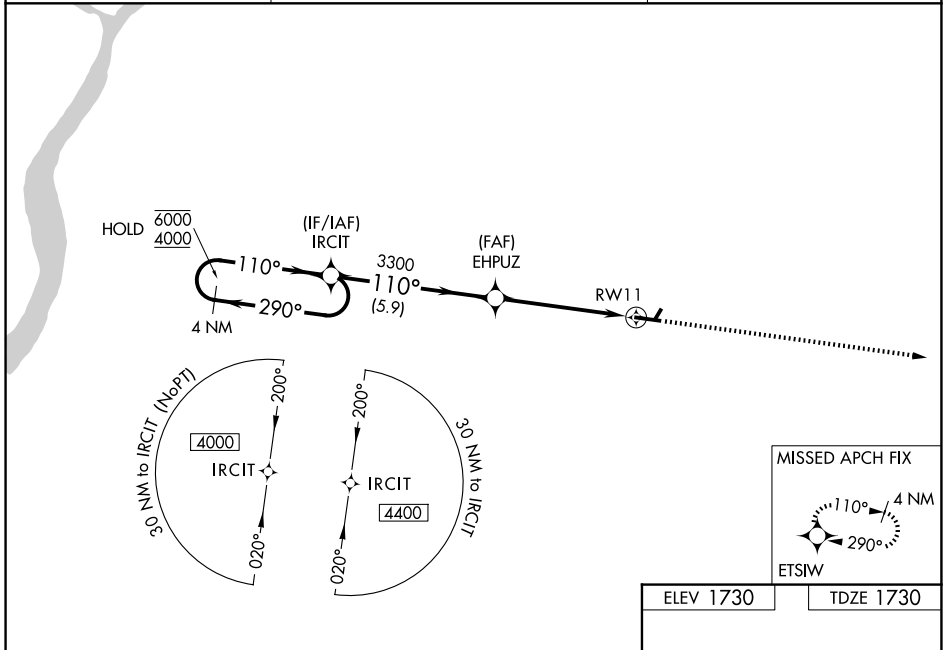
SCHUYLKILL COUNTY/JOE ZERBEY (Z.ER)

RNP APCH.

**NA** Circling NA to Rws 4 and 22. Baro-VNAV NA when using Selinsgrove altimeter setting. For uncompensated Baro-VNAV Systems, LNAV/VNAV NA below -18°C or above 54°C. When local altimeter setting not received, use Selinsgrove altimeter setting and increase LPV DA to 2191 feet, LNAV/VNAV DA to 2281 feet and all MDAs 280 feet. Increase LPV all Cats visibility  $\frac{5}{8}$  SM, LNAV/VNAV all Cats visibility  $\frac{3}{4}$  SM, LNAV Cats C/D visibility  $\frac{3}{8}$  SM and Circling Cats C/D visibility  $\frac{3}{4}$  SM. VDP NA when using Selinsgrove altimeter setting.

MISSED APPROACH: Climb to 4000 direct ETSIW and hold.

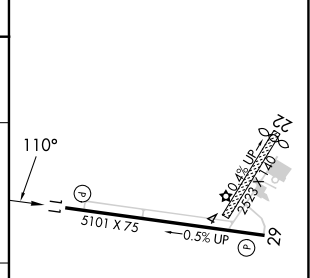
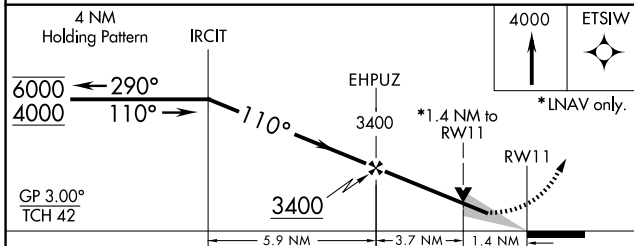
AWOS-3 <b>127.575</b>	HARRISBURG APP CON <b>118.25 269.45</b>	UNICOM <b>123.075 (CTAF) 0</b>
--------------------------	--	-----------------------------------



NE-4, 14 MAY 2026 to 11 JUN 2026

NE-4, 14 MAY 2026 to 11 JUN 2026

ELEV 1730	TDZE 1730
-----------	-----------



CATEGORY	A	B	C	D
LPV DA		1930- $\frac{3}{4}$	200 (200- $\frac{3}{4}$ )	
LNAV/DA VNAV		2020- $\frac{7}{8}$	290 (300- $\frac{7}{8}$ )	
LNAV MDA	2200-1	470 (500-1)	2200-1 $\frac{3}{8}$	470 (500-1 $\frac{3}{8}$ )
CIRCLING	2200-1	470 (500-1)	2220-1 $\frac{1}{2}$	2280-2

REIL Rws 11 and 29 **0**  
MIRL Rwy 11-29 **0**