

WAAS CH 63014 W29A	APP CRS 290°	Rwy Ldg TDZE Apt Elev	5101 1724 1730
--	------------------------	-----------------------------	---

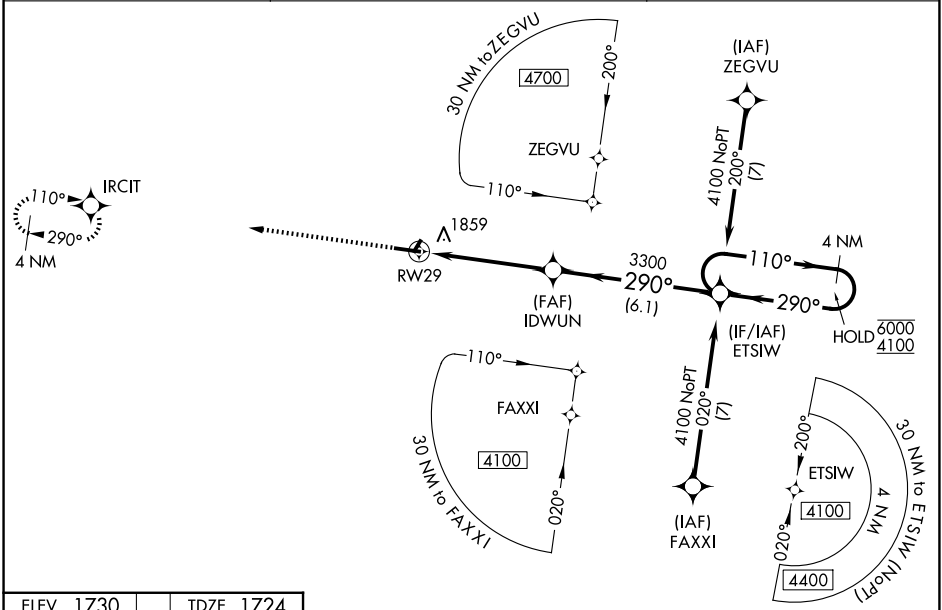
RNAV (GPS) RWY 29
SCHUYLKILL COUNTY/JOE ZERBEY (Z.E.R.)

RNP APCH - GPS

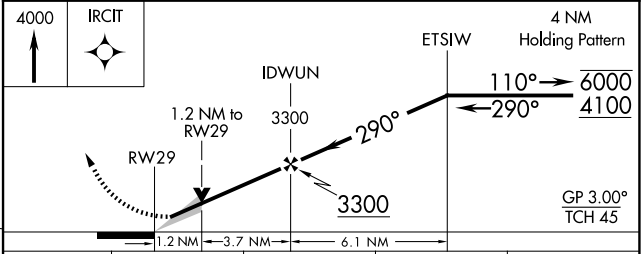
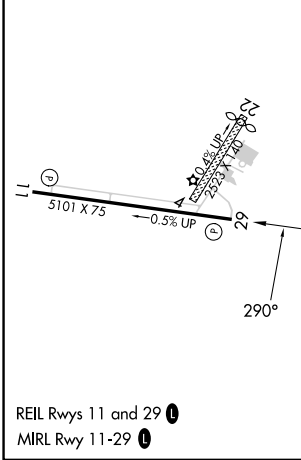
Circling NA to Rws 4 and 22. Baro-VNAV NA when using Selinsgrove altimeter setting. For uncompensated Baro-VNAV systems, LNAV/VNAV NA below -18°C or above 54°C. VDP NA when using Selinsgrove altimeter setting. When local altimeter setting not received, use Selinsgrove altimeter setting: increase LPV DA to 2156 feet and visibility 1/2 SM; LNAV/VNAV DA to 2376 feet and visibility 3/4 SM; increase all MDAs 240 feet and visibility LNAV Cats C/D 5/8 SM and Circling Cats C/D 1/2 SM.

MISSED APPROACH: Climb to 4000 direct IRCIT and hold.

AWOS-3 127.575	HARRISBURG APP CON 118.25 269.45	UNICOM 123.075 (CTAF) 0
--------------------------	--	-----------------------------------



ELEV 1730	TDZE 1724
-----------	-----------



CATEGORY	A	B	C	D
LPV DA		1924-3/4	200 (200-3/4)	
LNAV/VNAV DA		2144-1 1/8	420 (500-1 1/8)	
LNAV MDA	2120-1	396 (400-1)	2120-1 1/8	396 (400-1 1/8)
CIRCLING	2160-1 430 (500-1)	2180-1 450 (500-1)	2180-1 1/2 450 (500-1 1/2)	2280-2 550 (600-2)

NE-4, 14 MAY 2026 to 11 JUN 2026

NE-4, 14 MAY 2026 to 11 JUN 2026

REIL Rws 11 and 29 0
MIRL Rwy 11-29 0