

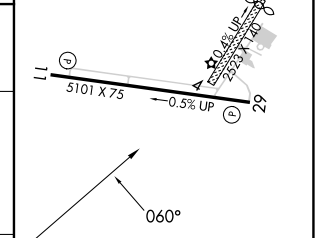
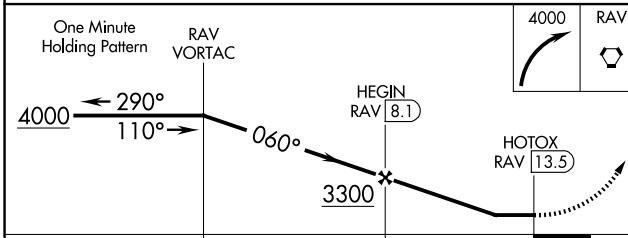
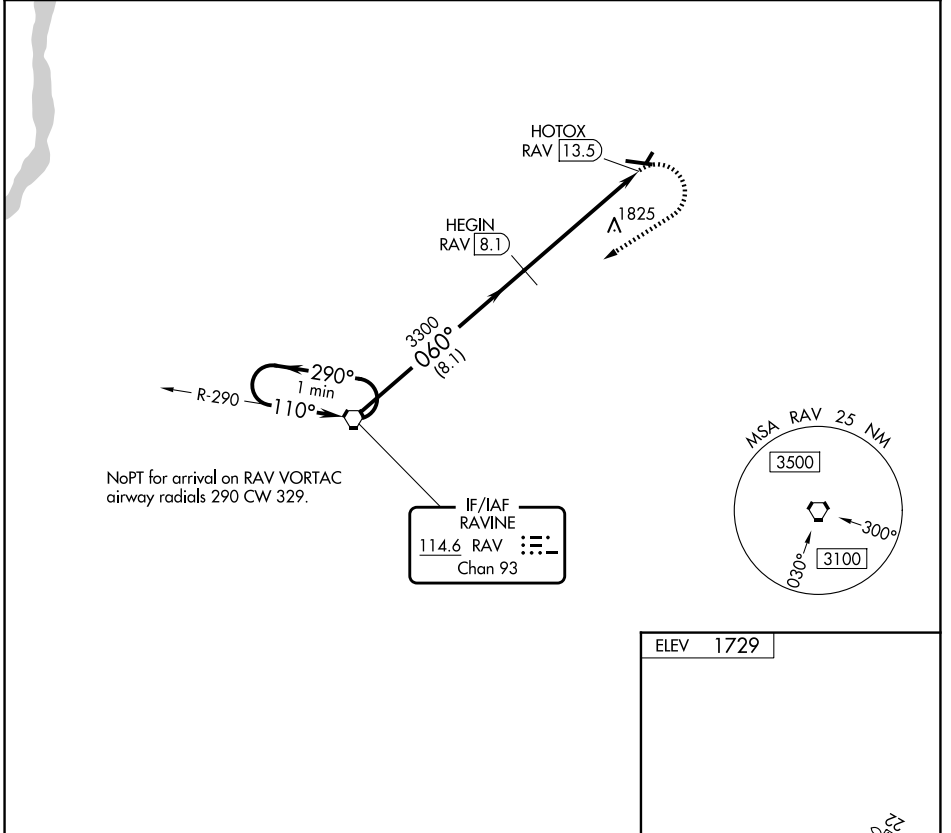
VORTAC RAV 114.6 Chan 93	APP CRS 060°	Rwy Ldg TDZE Apt Elev N/A N/A 1729
--	------------------------	--

VOR-A
SCHUYLKILL COUNTY/JOE ZERBEY (Z.F.R)

NA Circling to Rwy 4, 22 NA at night. DME required.
When local altimeter setting not received, use Penn Valley altimeter setting and increase all MDAs 280 feet and visibility Cat C and D ¾ SM.

MISSED APPROACH: Climbing right turn to 4000 direct RAV VORTAC and hold.

AWOS-3 127.575	HARRISBURG APP CON 118.25 269.45	UNICOM 123.075 (CTAF) 0
--------------------------	--	--



CATEGORY	A	B	C	D	
CIRCLING	2160-1 431 (500-1)	2180-1 451 (500-1)	2240-1½ 511 (600-1½)	2280-2 551 (600-2)	MIRL Rwy 11-29 0 REIL Rwys 11 and 29 0

NE-4, 14 MAY 2026 to 11 JUN 2026

NE-4, 14 MAY 2026 to 11 JUN 2026