

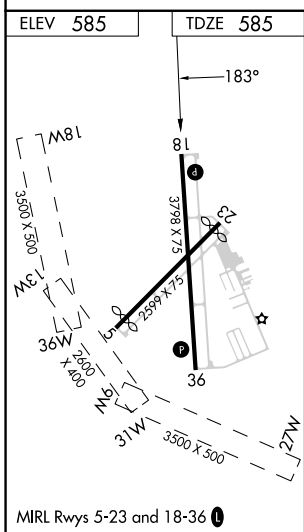
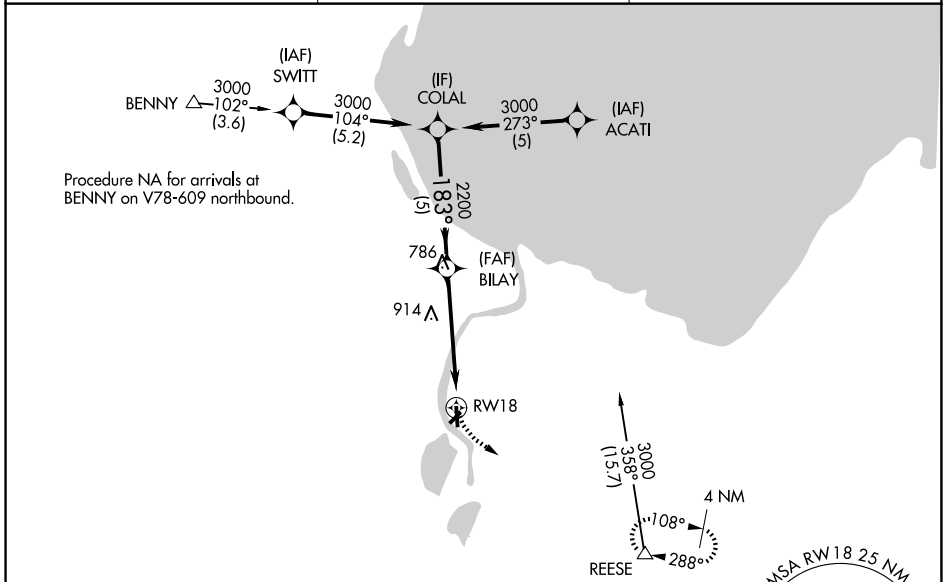
APP CRS	Rwy Ldg	3798
183°	TDZE	585
	Apt Elev	585

RNAV (GPS) RWY 18

JAMES CLEMENTS MUNI (3CM)

RNP APCH - GPS.	<p>▼ Circling NA to Rwys 18W, 36W, 13W, 31W, 9W and 27W. ▲ Circling NA southeast of Rwys 23 and 36. Rwy 18 helicopter visibility reduction below 1 SM NA. Use Saginaw County H W Browne altimeter setting. Procedure NA at night.</p>	MISSED APPROACH: Climbing left turn to 3000 direct REESE and hold.
-----------------	--	--

HYX AWOS-3P 118.325	GREAT LAKES APP CON ★ 120.95 235.625	UNICOM 122.725 (CTAF) ①
-------------------------------	--	-----------------------------------



ELEV 585	TDZE 585		
		3000 REESE 	
CATEGORY	A	B	D
LNAV MDA	1260-1	675 (700-1)	1260-2 675 (700-2)
CIRCLING	1260-1	675 (700-1)	1260-2 675 (700-2)

EC-1, 14 MAY 2026 to 11 JUN 2026

EC-1, 14 MAY 2026 to 11 JUN 2026