

RNAV (GPS) RWY 18

INDIANAPOLIS EXEC (TYQ)

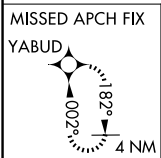
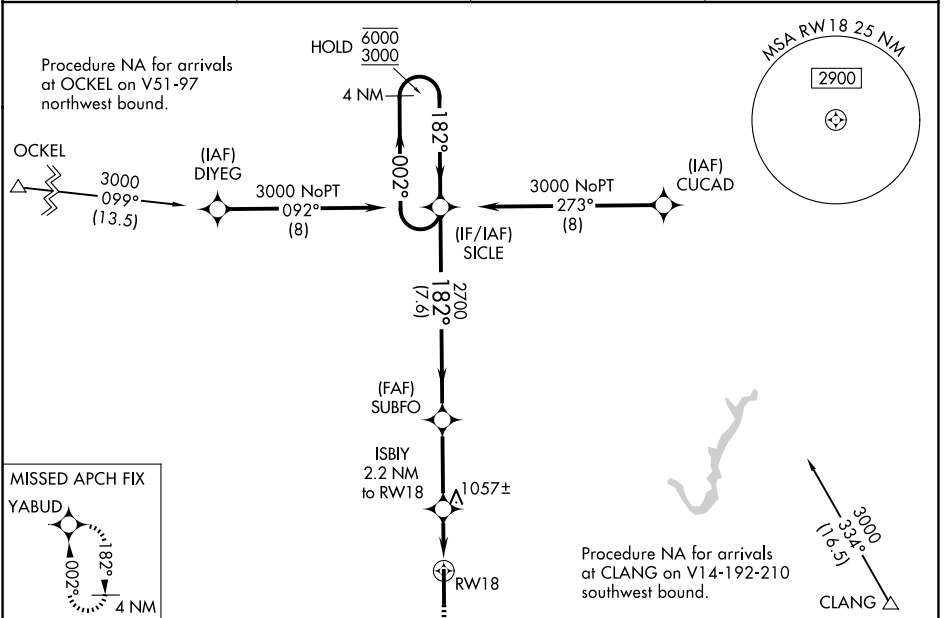
APP CRS 182°	Rwy Ldg TDZE 922	7001
	Apt Elev 922	

RNP APCH - GPS.

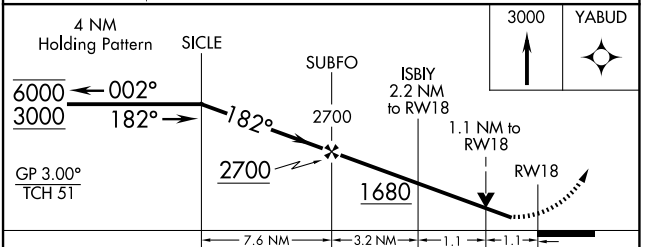
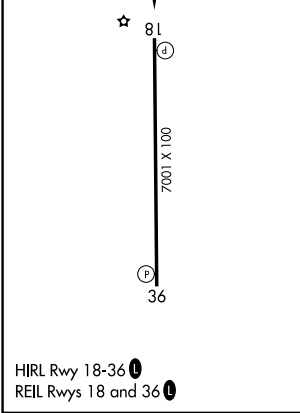
▼ Rwy 18 helicopter visibility reduction below $\frac{3}{4}$ SM NA. For uncompensated Baro-VNAV systems, LNAV/VNAV NA below -16°C or above 54°C.

▲ MISSED APPROACH: Climb to 3000 direct YABUD and hold.

AWOS-3PT 120.725	INDIANAPOLIS APP CON 124.65 127.15 317.8	CLNC DEL 118.175	UNICOM 123.05 (CTAF)
----------------------------	--	----------------------------	--------------------------------



ELEV 922	TDZE 922
----------	----------



CATEGORY	A	B	C	D
LNAV/VNAV DA	1216- $\frac{7}{8}$ 294 (300- $\frac{7}{8}$)			
LNAV MDA	1320-1 398 (400-1)		1320-1 $\frac{1}{8}$ 398 (400-1 $\frac{1}{8}$)	
CIRCLING	1380-1 458 (500-1)		1440-1 $\frac{1}{2}$ 518 (600-1 $\frac{1}{2}$) 1480-2 558 (600-2)	

EC-2, 14 MAY 2026 to 11 JUN 2026

EC-2, 14 MAY 2026 to 11 JUN 2026