

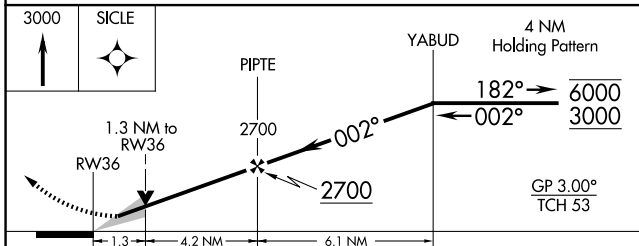
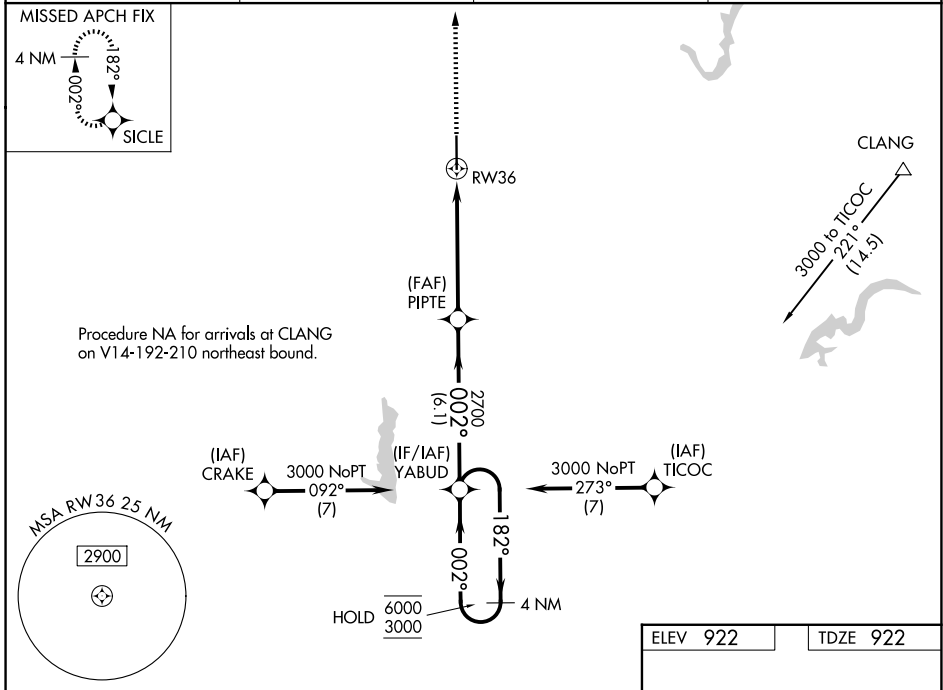
WAAS CH 53599 W36A	APP CRS 002°	Rwy Ldg 7001 TDZE 922 Apt Elev 922
--	------------------------	---

RNAV (GPS) RWY 36

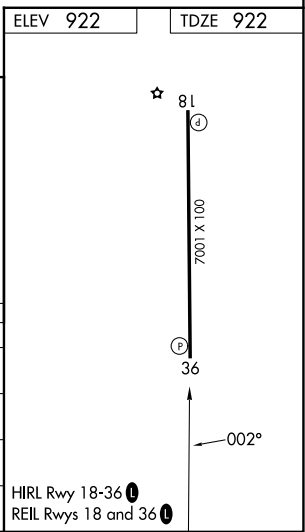
INDIANAPOLIS EXEC (TYQ)

RNP APCH - GPS.	MISSED APPROACH: Climb to 3000 direct SICLE and hold.
<p>▼ For uncompensated Baro-VNAV systems, LNAV/VNAV NA below -16°C or above 54°C.</p>	

AWOS-3PT 120.725	INDIANAPOLIS APP CON 124.65 127.15 317.8	CLNC DEL 118.175	UNICOM 123.05 (CTAF)
----------------------------	--	----------------------------	--------------------------------



CATEGORY	A	B	C	D
LPV DA		1172-3/4	250 (300-3/4)	
LNAV/VNAV DA		1351-1 1/4	429 (500-1 1/4)	
LNAV MDA	1380-1	458 (500-1)	1380-1 3/8	458 (500-1 3/8)
CIRCLING	1400-1	478 (500-1)	1440-1 1/2 518 (600-1 1/2)	1480-2 558 (600-2)



EC-2, 14 MAY 2026 to 11 JUN 2026

EC-2, 14 MAY 2026 to 11 JUN 2026