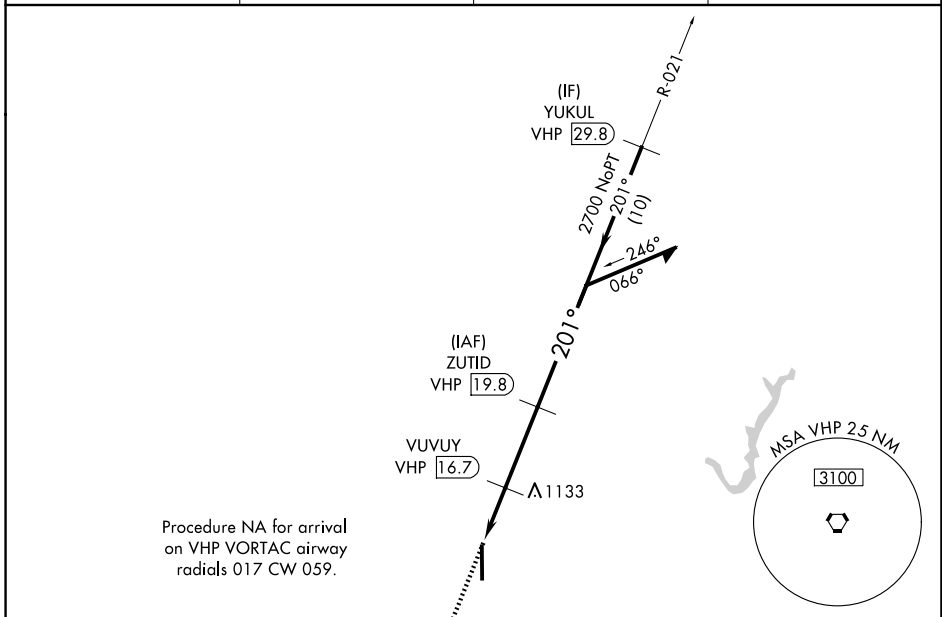


VORTAC VHP 116.3 Chan 110	APP CRS 201°	Rwy Ldg 7001 TDZE 922 Apt Elev 922
---	------------------------	---

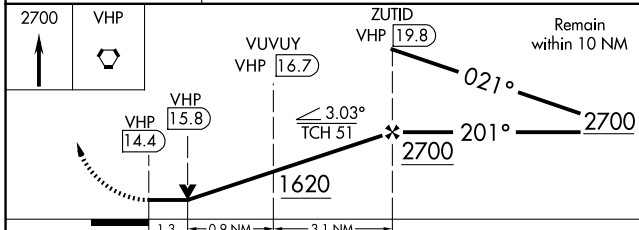
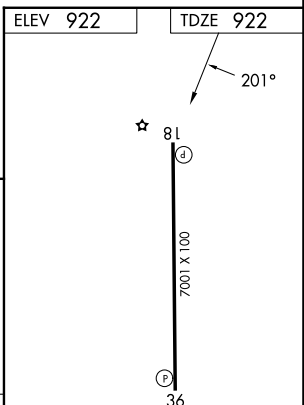
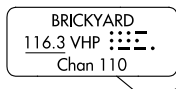
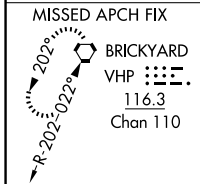
VOR RWY 18
INDIANAPOLIS EXEC (TYQ)

DME required.		MISSED APPROACH: Climb to 2700 direct VHP VORTAC and hold.
▼	▲ Rwy 18 helicopter visibility reduction below 3/4 SM NA.	

AWOS-3PT 120.725	INDIANAPOLIS APP CON 124.65 127.15 317.8	CLNC DEL 118.175	UNICOM 123.05 (CTAF) ①
----------------------------	--	----------------------------	----------------------------------



Procedure NA for arrival on VHP VORTAC airway radials 017 CW 059.



CATEGORY	A	B	C	D
S-18	1400-1 478 (500-1)		1400-1 3/8 478 (500-1 3/8)	
CIRCLING	1400-1 478 (500-1)		1440-1 1/2 518 (600-1 1/2)	1480-2 558 (600-2)

HIRL Rwy 18-36 ①
REIL Rwsy 18 and 36 ①

EC-2, 14 MAY 2026 to 11 JUN 2026

EC-2, 14 MAY 2026 to 11 JUN 2026