

WAAS CH 99619 W16A	APP CRS 159°	Rwy Ldg TDZE Apt Elev	6501 1999 1999
--	------------------------	-----------------------------	---

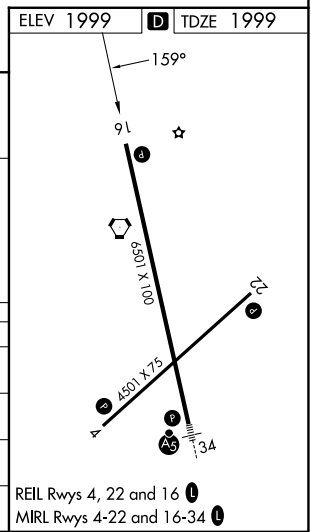
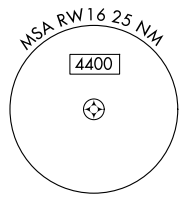
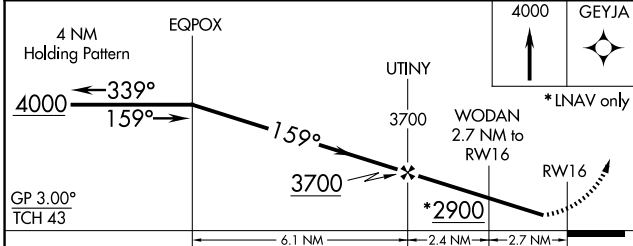
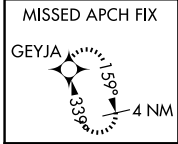
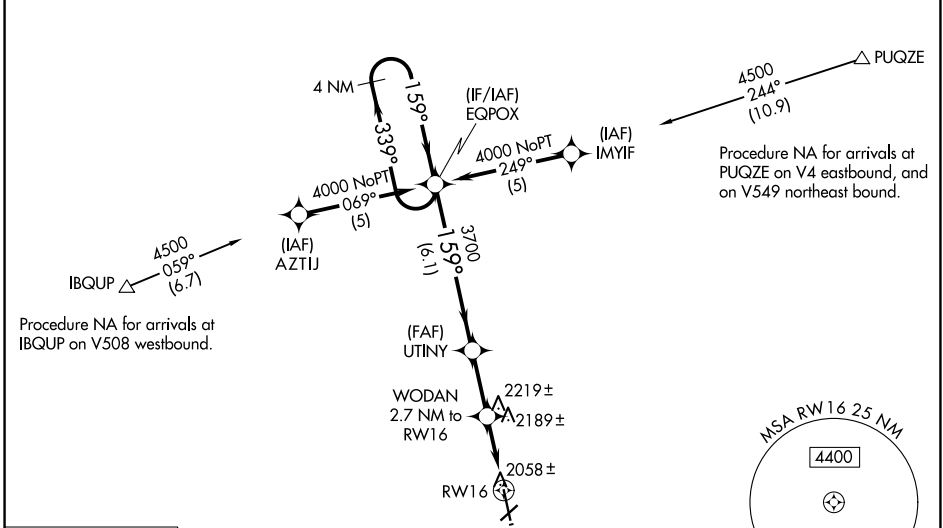
RNAV (GPS) RWY 16

HAYS RGNL (HYS)

⚠ For uncompensated Baro-VNAV systems, LNAV/VNAV NA below -18°C (0°F) or above 45°C (113°F).
⚠ DME/DME RNP-0.3 NA. Visibility reduction by helicopters NA. When local altimeter setting not received, use Russell altimeter setting: increase LPV DA to 2318 feet; increase LNAV/VNAV DA to 2445 feet and visibility all Cats ½ SM; increase all MDA 80 feet and visibility LNAV and Circling Cat C and D ¼ SM. Baro-VNAV NA when using Russell altimeter setting. Circling NA for Cat D northwest of Rwy 4 and west of Rwy 16.

MISSED APPROACH:
Climb to 4000 direct GEYJA and hold.

AWOS-3PT 125.525	KANSAS CITY CENTER 124.4 322.4	UNICOM 122.8 (CTAF) ①
----------------------------	--	---------------------------------



CATEGORY	A	B	C	D
LPV DA		2249-1	250 (300-1)	
LNAV/VNAV DA		2308-1	309 (400-1)	
LNAV MDA	2440-1	441 (500-1)	2440-1¼ 441 (500-1¼)	2440-1½ 441 (500-1½)
CIRCLING	2480-1	481 (500-1)	2560-1½ 561 (600-1½)	2680-2¼ 681 (700-2¼)

NC-2, 14 MAY 2026 to 11 JUN 2026

NC-2, 14 MAY 2026 to 11 JUN 2026