

WAAS CH 90519 W04A	APP CRS 040°	Rwy Ldg TDZE Apt Elev	4500 1990 1999
---------------------------------	------------------------	-----------------------------	---

RNAV (GPS) RWY 4

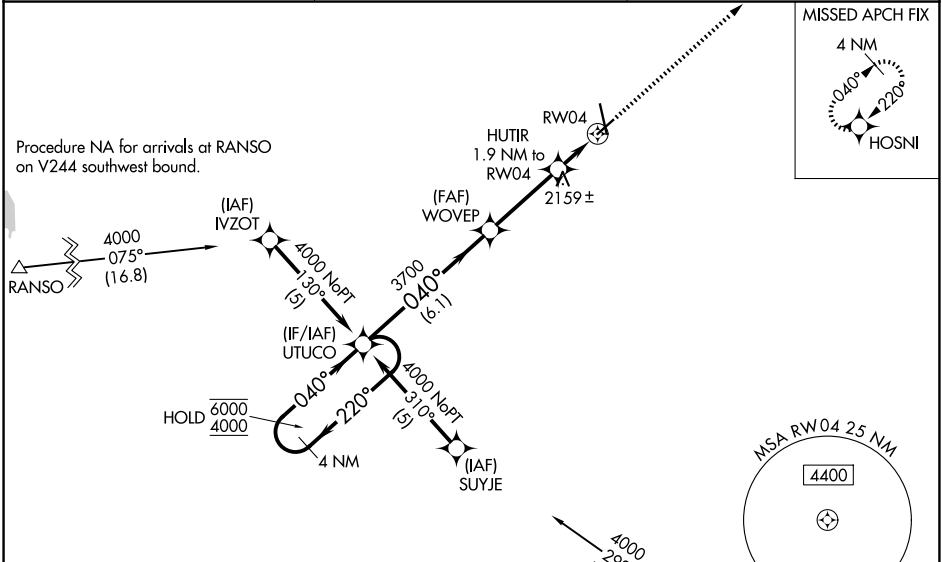
HAYS RGNL (HYS)

RNP APCH - GPS.

⚠ For uncompensated Baro-VNAV systems, LNAV/VNAV NA below -18°C or above 54°C. Baro-VNAV and VDP NA when using RSL altimeter setting. When local altimeter setting not received, use RSL altimeter setting; increase LPV DA to 2309 feet; increase LNAV/VNAV DA to 2459 feet and visibility all Cats ¼ SM; increase all MDA 80 feet and LNAV visibility Cat C/D ¼ SM, and Circling visibility Cat C/D ¼ SM. Circling NA for Cat D northwest of Rwy 4 and west of Rwy 16.

MISSED APPROACH: Climb to 4000 direct HOSNI and hold.

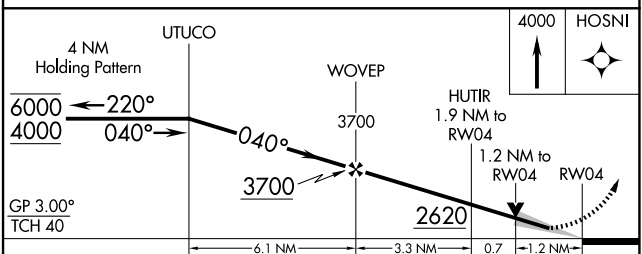
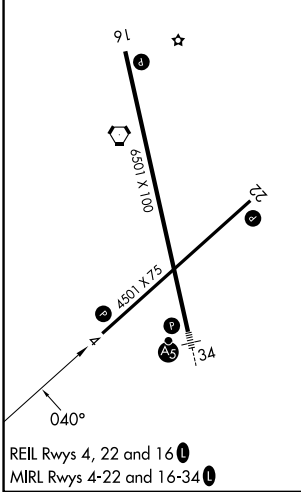
AWOS-3PT 125.525	KANSAS CITY CENTER 124.4 322.4	UNICOM 122.8 (CTAF) 0
----------------------------	--	---------------------------------



NC-2, 14 MAY 2026 to 11 JUN 2026

NC-2, 14 MAY 2026 to 11 JUN 2026

ELEV 1999	D	TDZE 1990
-----------	----------	-----------



CATEGORY	A	B	C	D
LPV DA		2240-1	250 (300-1)	
LNAV/VNAV DA		2390-1½	400 (400-1½)	
LNAV MDA	2420-1	430 (500-1)	2420-1¼ 430 (500-1¼)	2420-1½ 430 (500-1½)
CIRCLING	2480-1	481 (500-1)	2560-1½ 561 (600-1½)	2680-2¼ 681 (700-2¼)