

VORTAC HYS <b>110.4</b> Chan 41	APP CRS <b>170°</b>	Rwy Ldg TDZE Apt Elev	<b>6501</b> <b>1999</b> <b>1999</b>
---------------------------------------	------------------------	-----------------------------	---

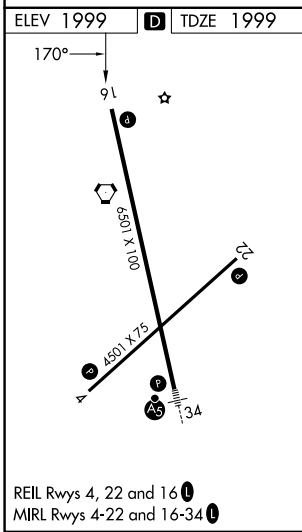
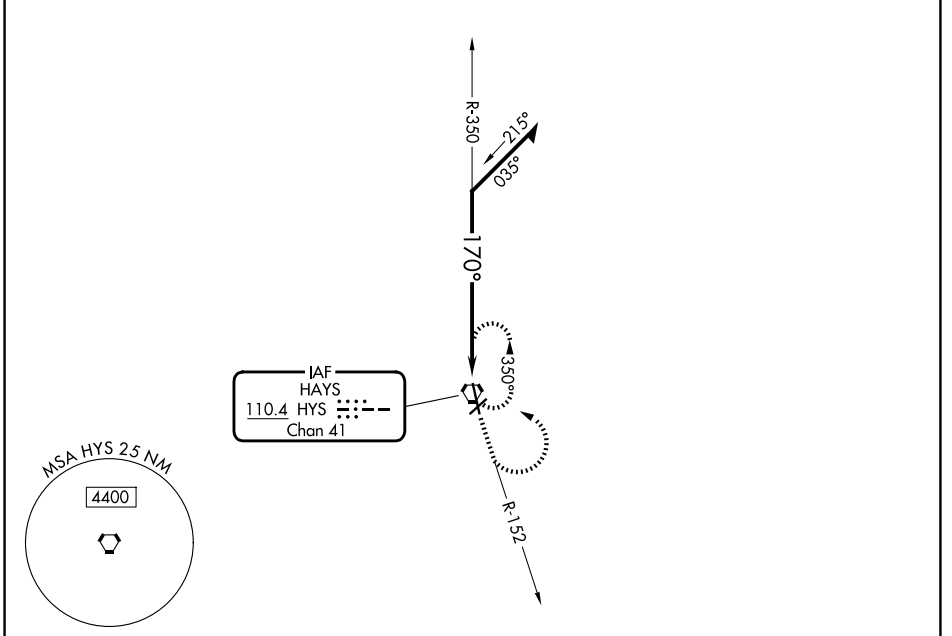
# VOR RWY 16

HAYS RGNL (HYS)

**⚠** When local altimeter setting not received, use Russell altimeter setting and increase all MDA 80 feet, increase S-16 and Circling Cats B, C and D visibility ¼ mile. Visibility reduction by helicopters NA. Circling NA for Cat D northwest of Rwy 4 and west of Rwy 16.

**MISSED APPROACH:** Climb to 3800 via HYS R-152 then climbing left turn to 3900 direct HYS VORTAC and hold.

AWOS-3PT <b>125.525</b>	KANSAS CITY CENTER <b>124.4 322.4</b>	UNICOM <b>122.8 (CTAF) 0</b>
----------------------------	--	---------------------------------



Remain within 10 NM HYS VORTAC 3900 350° 170°	3800 ↑ HYS R-152	3900 ↶ HYS	HYS ⬡	
	DISKS 3900 31.7 (34.9)			
CATEGORY	A	B	C	D
S-16	2700-1	701 (800-1)	2700-2 701 (800-2)	2700-2¼ 701 (800-2¼)
CIRCLING	2700-1	701 (800-1)	2700-2 701 (800-2)	2700-2¼ 701 (800-2¼)

HAYS, KANSAS  
Amdt 3E 27JAN22

38°51'N-99°16'W

# HAYS RGNL (HYS) VOR RWY 16

NC-2, 14 MAY 2026 to 11 JUN 2026

NC-2, 14 MAY 2026 to 11 JUN 2026