

WAAS CH 87130 W35A	APP CRS 353°	Rwy Ldg TDZE Apt Elev	5501 580 592
--	------------------------	-----------------------------	---

RNAV (GPS) RWY 35

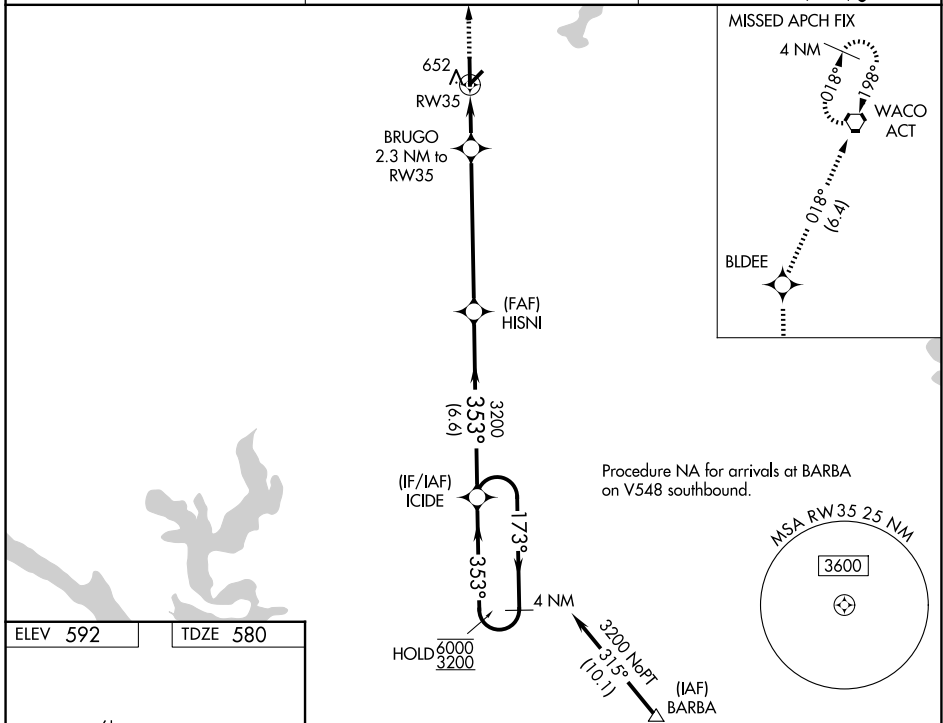
MC GREGOR EXEC (PWG)

RNP APCH - GPS.

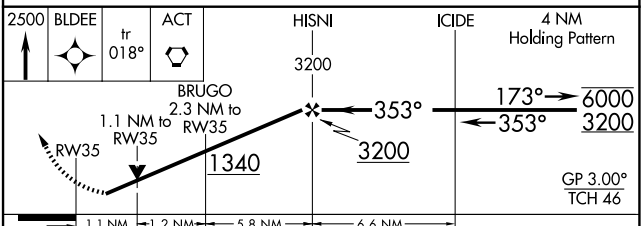
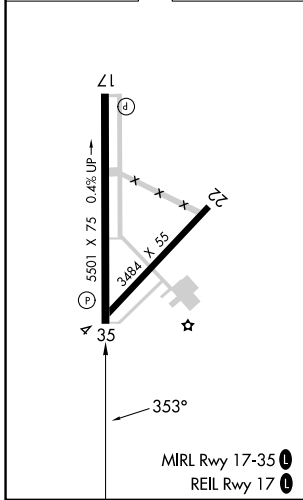
▼ Rwy 35 helicopter visibility reduction below 3/4 SM NA. For uncompensated Baro-VNAV systems, LNAV/VNAV NA below -7°C or above 54°C. Baro-VNAV and VDP NA when using ACT altimeter setting. Circling Rwy 4/22 NA at night. When local altimeter setting not received, use ATC altimeter setting and increase all DA to 861 feet and all visibilities 1/2 SM; increase all MDAs 40 feet and LNAV visibility Cat C 1/2 SM, and Circling visibility Cat C 1/4 SM.

MISSED APPROACH:
Climb to 2500 direct BLDEE and on track 018° to ACT VORTAC and hold.

AWOS-3PT 135.525	WACO APP CON★ 127.65 352.0	UNICOM 123.05 (CTAF) 0
----------------------------	--------------------------------------	----------------------------------



ELEV 592	TDZE 580
----------	----------



CATEGORY	A	B	C	D
LPV DA	830-3/4	250 (300-3/4)		NA
LNAV/VNAV DA	830-3/4	250 (300-3/4)		NA
LNAV MDA	960-1	380 (400-1)		NA
CIRCLING	1020-1 428 (500-1)	1060-1 468 (500-1)	1300-2 708 (800-2)	NA