

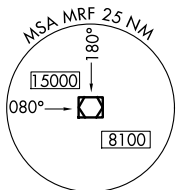
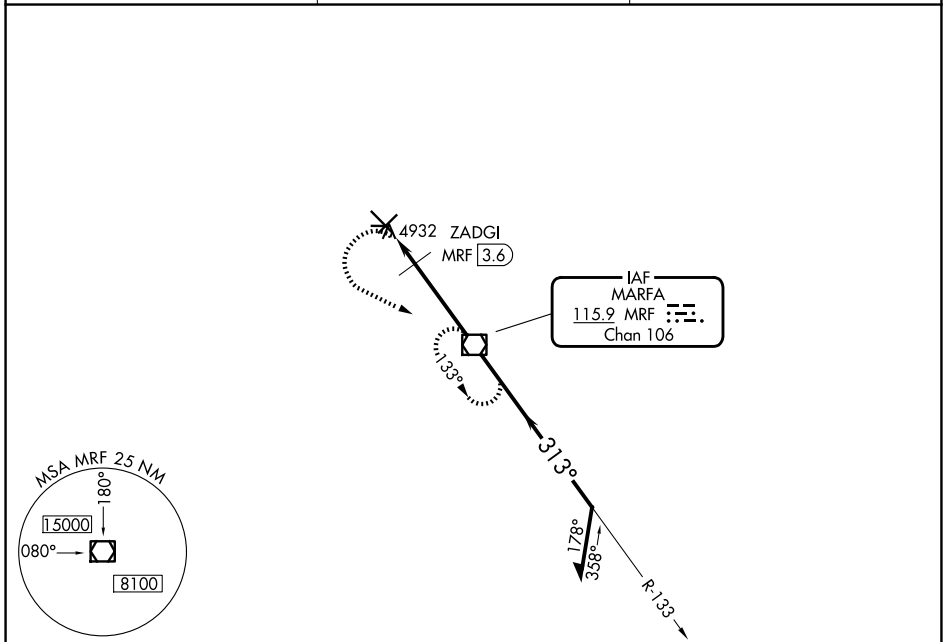
VOR/DME MRF <b>115.9</b> Chan <b>106</b>	APP CRS <b>313°</b>	Rwy Ldg TDZE Apt Elev <b>6203</b> <b>4840</b> <b>4849</b>
--	------------------------	--

**VOR RWY 31**  
MARFA MUNI (MRF)

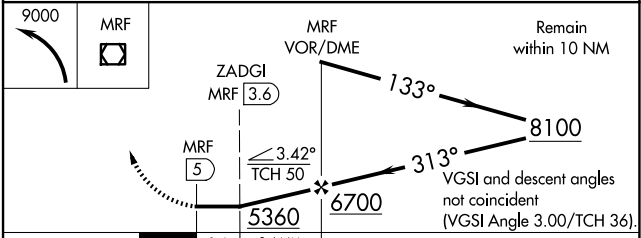
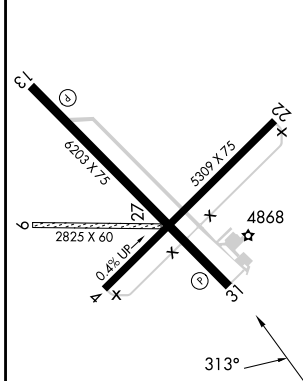
**▽** When local altimeter setting not received, procedure NA.  
**▲** Circling NA to Rwy 9, 27.

MISSED APPROACH: Climbing left turn to 9000 direct MRF VOR/DME and hold, continue climb-in-hold to 9000.

AWOS-3PT <b>134.025</b>	ALBUQUERQUE CENTER <b>135.875 292.15</b>	UNICOM <b>122.8 (CTAF)</b>
----------------------------	---	-------------------------------



ELEV <b>4849</b>	TDZE <b>4840</b>
------------------	------------------



CATEGORY	A	B	C	D
S-31	5360-1	520 (600-1)	5360-1 $\frac{3}{8}$	520 (600-1 $\frac{3}{8}$ )
CIRCLING	5360-1	511 (600-1)	5440-1 $\frac{1}{2}$ 591 (600-1 $\frac{1}{2}$ )	5780-3 931 (1000-3)
ZADGI FIX MINIMUMS				
S-31	5200-1		360 (400-1)	
CIRCLING	5280-1 431 (500-1)	5300-1 451 (500-1)	5440-1 $\frac{1}{2}$ 591 (600-1 $\frac{1}{2}$ )	5780-3 931 (1000-3)

MIRL Rwy 13-31 **①**

FAF to MAP 5 NM

Knots	60	90	120	150	180
Min:Sec	5:00	3:20	2:30	2:00	1:40

SC-3, 14 MAY 2026 to 11 JUN 2026

SC-3, 14 MAY 2026 to 11 JUN 2026