

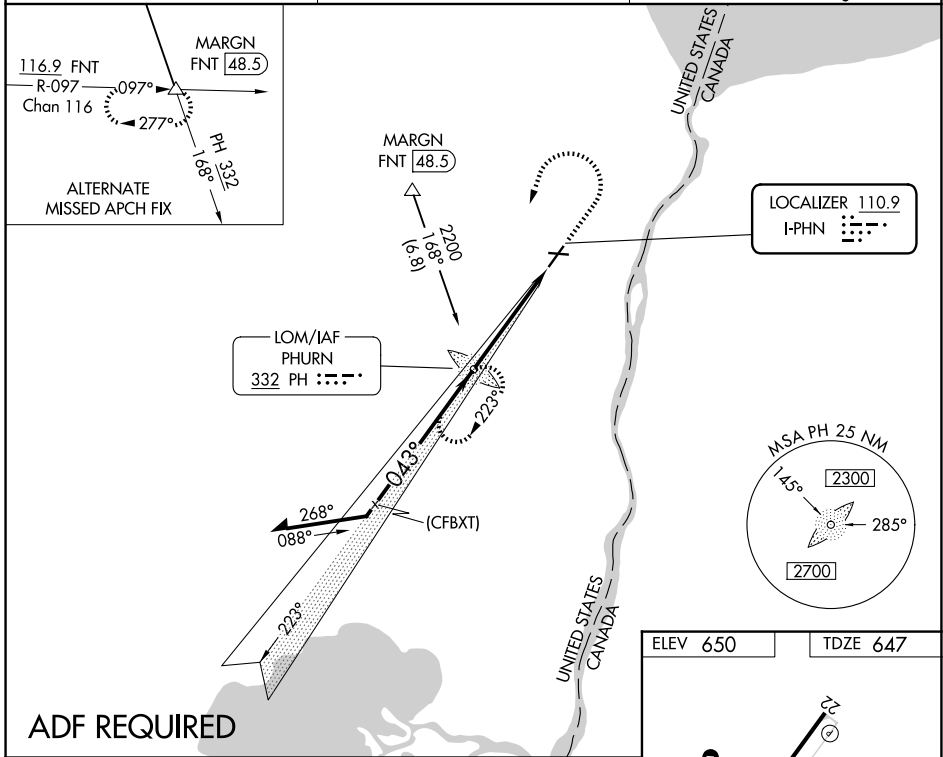
LOC I-PPHN 110.9	APP CRS 043°	Rwy Ldg TDZE Apt Elev	5104 647 650
----------------------------	------------------------	-----------------------------	---

ILS or LOC RWY 4

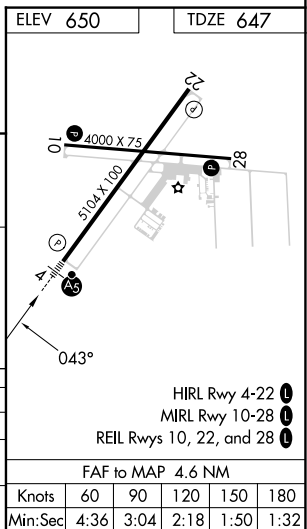
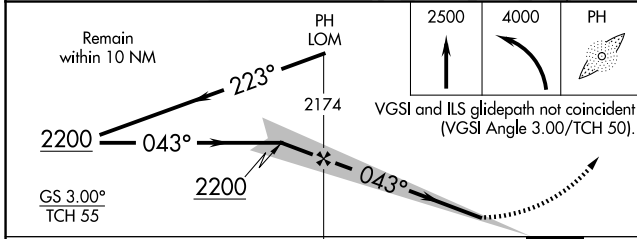
ST CLAIR COUNTY INTL (PHN)

<p>▽ ADF required. When local altimeter setting not received, use Troy altimeter setting and increase all DA 95 feet and all MDA 100 feet; increase S-LOC 4 Cats C and D and Circling Cats C and D visibility ¼ mile. For inop MALSR when using Troy altimeter setting, increase S-ILS 4 all Cats visibility to ¾ mile. Night landing: Rwy 10, 22, 28 NA.</p>	<p>MALSR</p>	<p>MISSED APPROACH: Climb to 2500 then climbing left turn to 4000 direct PHURN LOM and hold, continue climb-in-hold to 4000.</p>
--	---------------------	---

<p>AWOS-3P 118.375</p>	<p>SELRIDGE APP CON ★ 119.6 391.9</p>	<p>UNICOM 123.05 (CTAF)</p>
-----------------------------------	--	--



ADF REQUIRED



CATEGORY	A	B	C	D
S-ILS 4		847-½	200 (200-½)	
S-LOC 4	1100-½	453 (500-½)	1100-¾	453 (500-¾)
CIRCLING	1160-1	510 (600-1)	1260-1¼ 610 (700-1¼)	1260-2 610 (700-2)

EC-1, 14 MAY 2026 to 11 JUN 2026

EC-1, 14 MAY 2026 to 11 JUN 2026