

WAAS CH 97723 W22A	APP CRS 223°	Rwy Ldg 5104 TDZE 649 Apt Elev 650
--	------------------------	---

RNAV (GPS) RWY 22

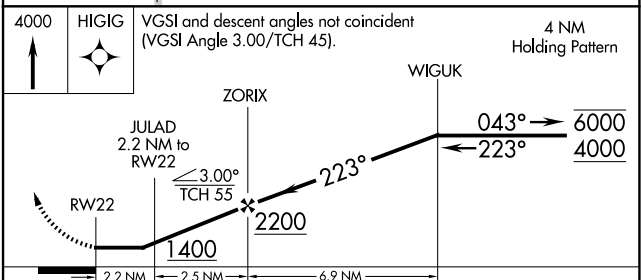
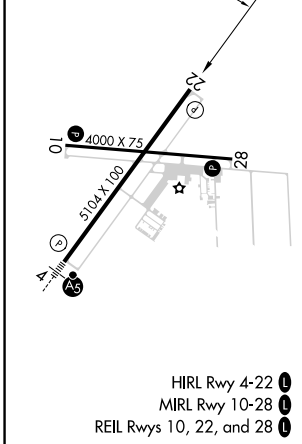
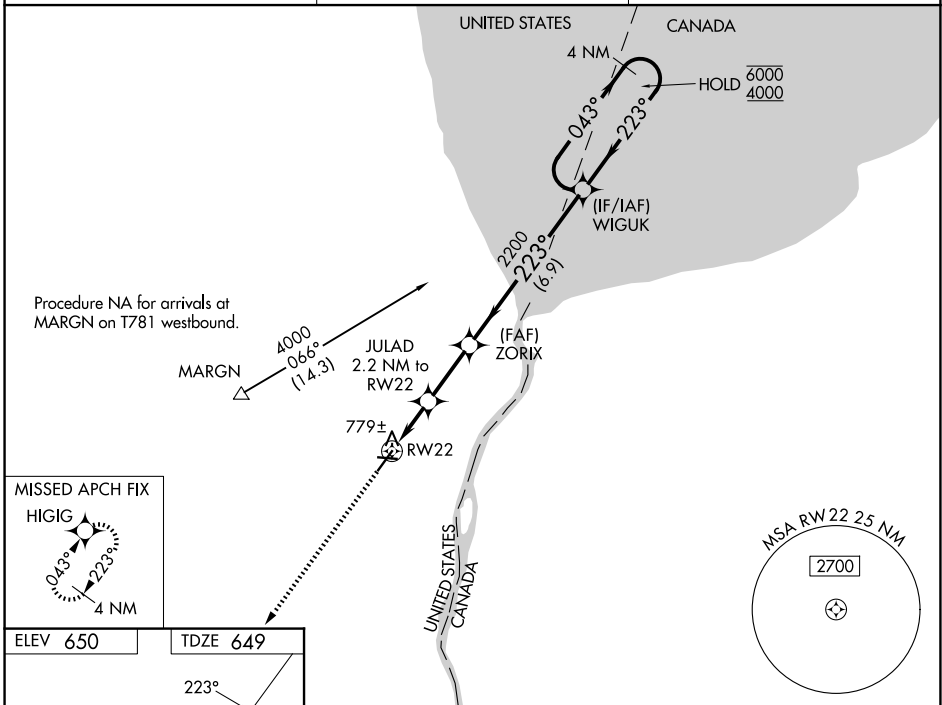
ST CLAIR COUNTY INTL (PHN)

RNP APCH.

⚠ Rwy 22 helicopter visibility reduction below 1 SM NA.
⚠ Straight-in Rwy 22 NA at night, Circling Rwy 10, 22, 28 NA at night.

MISSED APPROACH: Climb to 4000 direct HIGIG and hold, continue climb-in-hold to 4000.

AWOS-3P 118.375	SELFDRIDGE APP CON ★ 119.6 391.9	UNICOM 123.05 (CTAF) 0
---------------------------	--	----------------------------------



CATEGORY	A	B	C	D
LP MDA	1020-1 371 (400-1)			
LNAV MDA	1040-1 391 (400-1)	1040-1½ 391 (400-1½)		
CIRCLING	1160-1 510 (600-1)	1260-1¾ 610 (700-1¾)	1260-2 610 (700-2)	

EC-1, 14 MAY 2026 to 11 JUN 2026

EC-1, 14 MAY 2026 to 11 JUN 2026