

WAAS CH 56234 W18A	APP CRS 184°	Rwy Ldg 3800 TDZE 835 Apt Elev 835
--	------------------------	---

RNAV (GPS) RWY 18

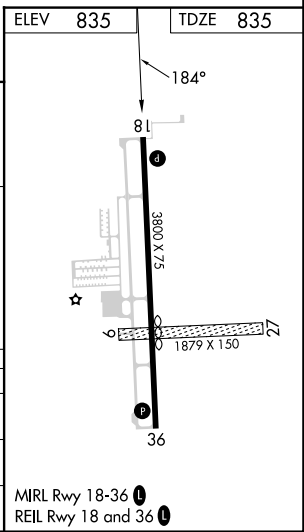
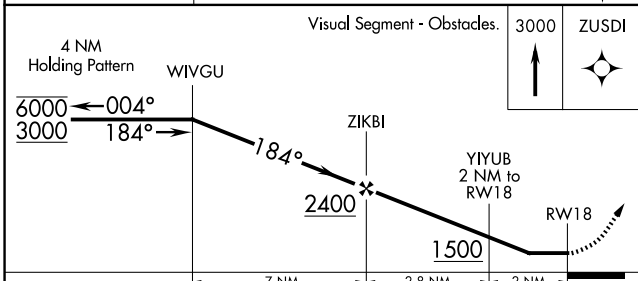
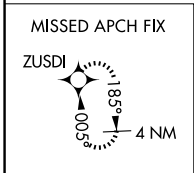
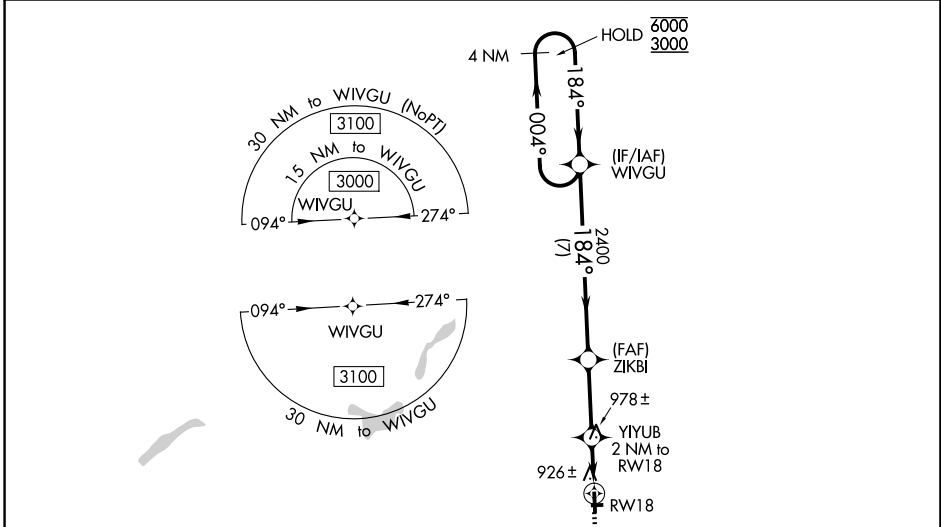
DUPONT/LAPEER (D95)

RNP APCH - GPS.

⚠ Rwy 18 helicopter visibility reduction below 1 SM NA. Circling NA to Rwys 9 and 27.
⚠ When local altimeter setting not received, use FNT altimeter setting and increase all MDAs 60 feet and increase LP Cat C visibility 1/8 SM, LNAV Cat C and Circling Cat C visibility 1/4 SM.

MISSED APPROACH:
 Climb to 3000 direct ZUSDI and hold.

AWOS-3P 134.05	GREAT LAKES APP CON ★ 118.8 257.9	UNICOM 123.0 (CTAF) 0
--------------------------	---	---------------------------------



CATEGORY	A	B	C	D
LP MDA	1180-1 345 (400-1)			NA
LNAV MDA	1240-1	405 (500-1)	1240-1 1/8 405 (500-1 1/8)	NA
CIRCLING	1300-1 465 (500-1)	1380-1 545 (600-1)	1460-1 3/4 625 (700-1 3/4)	NA

EC-1, 14 MAY 2026 to 11 JUN 2026

EC-1, 14 MAY 2026 to 11 JUN 2026