

APP CRS	Rwy Ldg	<b>4440</b>
<b>146°</b>	TDZE	<b>721</b>
	Apt Elev	<b>742</b>

# RNAV (GPS) RWY 15

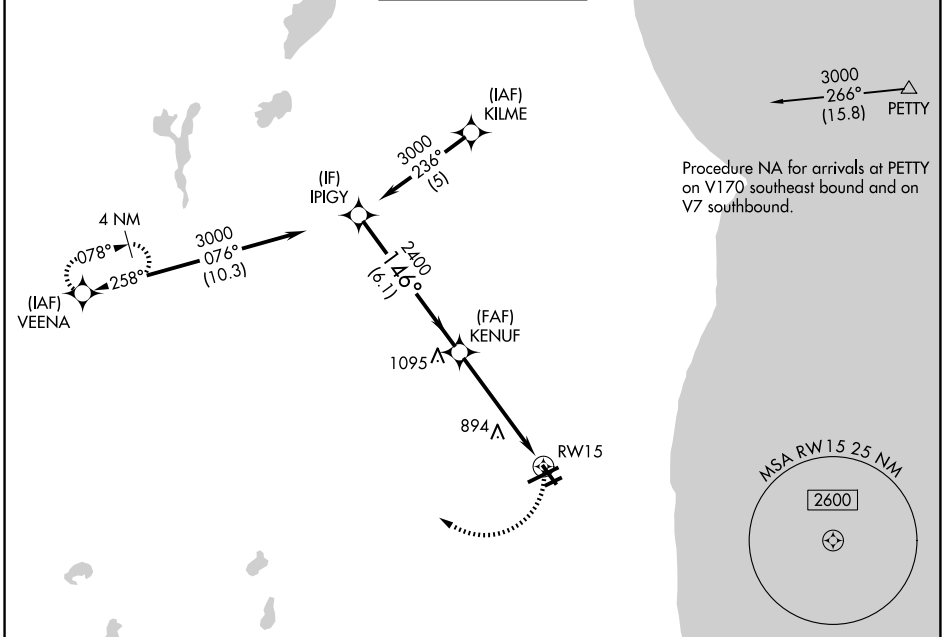
KENOSHA RGNL (ENW)

RNP APCH.

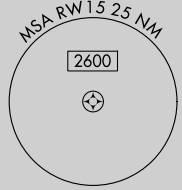
**▼** Rwy 15 helicopter visibility reduction below 1 SM NA. Straight-In and Circling Rwy 15 NA at night, Circling Rwy 7R NA at night.

**MISSED APPROACH:**  
Climbing right turn to 3000  
direct VEENA and hold.

ATIS <b>127.175</b>	MILWAUKEE APP CON <b>135.875 317.725</b>	KENOSHA TOWER ★ <b>118.6</b> (CTAF) <b>353.6</b>	GND CON <b>121.875</b>	UNICOM <b>122.95</b>
------------------------	---	---	---------------------------	-------------------------



Procedure NA for arrivals at PETTY on V170 southeast bound and on V7 southbound.



EC-3, 14 MAY 2026 to 11 JUN 2026

EC-3, 14 MAY 2026 to 11 JUN 2026

ELEV 742	TDZE 721
----------	----------

Visual Segment - Obstacles.

CATEGORY	A	B	C	D
LNNAV MDA	1200-1	479 (500-1)	1200-1 $\frac{3}{8}$ 479 (500-1 $\frac{3}{8}$ )	1200-1 $\frac{1}{2}$ 479 (500-1 $\frac{1}{2}$ )
CIRCLING	1200-1 458 (500-1)	1340-1 598 (600-1)	1400-1 $\frac{3}{4}$ 658 (700-1 $\frac{3}{4}$ )	1440-2 $\frac{1}{4}$ 698 (700-2 $\frac{1}{4}$ )

MIRL Rwy 7R-25L **1**

HIRL Rwy 7L-25R and 15-33 **1**

REIL Rwy 25R **1**