

WAAS CH 87107 W02A	APP CRS 018°	Rwy Ldg TDZE Apt Elev	4028 933 934
--	------------------------	-----------------------------	---

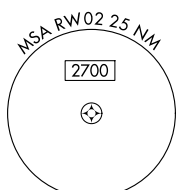
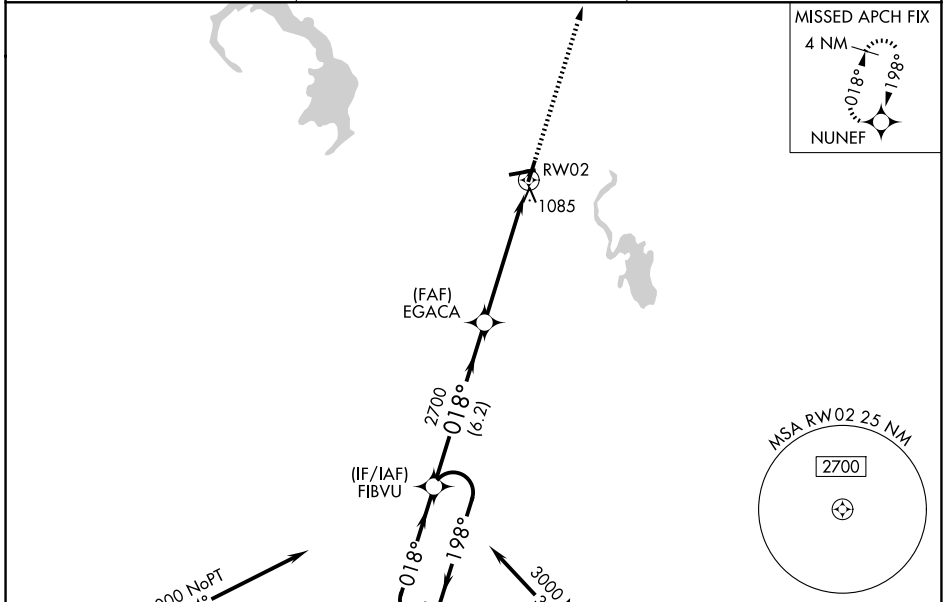
RNAV (GPS) RWY 2

DODGE COUNTY (UNU)

⚠ For uncompensated Baro-VNAV systems, LNAV/VNAV NA below -16° C (4° F) or above 54° C (130° F). DME/DME RNP-0.3 NA. When local altimeter setting not received, use Dane County Rgnl-Truax Fld altimeter setting and increase all DA/MDA 100 feet, increase all visibilities ½ mile. VDP and Baro-VNAV NA when using Dane County Rgnl-Truax Fld altimeter setting. Visibility reduction by helicopters NA.

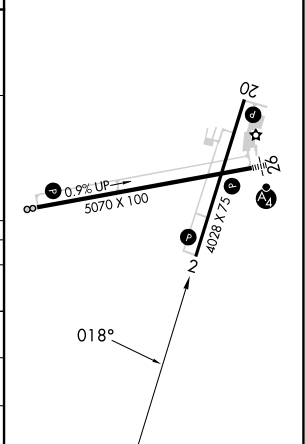
MISSED APPROACH:
Climb to 3000 direct NUNEF and hold.

AWOS-3 120.825	MADISON APP CON ★ 119.15 343.7	UNICOM 122.7 (CTAF) 0
--------------------------	--	---------------------------------



ELEV 934	TDZE 933
REIL Rwy 2, 8, and 20 0	
MIRL Rwy 8-26 and 2-20 0	

CATEGORY	4 NM Holding Pattern FIBVU		3000	NUNEF
	A	B		
LPV DA	1189-1 256 (300-1)			NA
LNAV/VNAV DA	1432-1¾ 499 (500-1¾)			NA
LNAV MDA	1400-1 467 (500-1)	1400-1¼ 467 (500-1¼)		NA
CIRCLING	1440-1 506 (600-1)	1440-1½ 506 (600-1½)		NA



EC-3, 14 MAY 2026 to 11 JUN 2026

EC-3, 14 MAY 2026 to 11 JUN 2026