

WAAS CH 61307 W20A	APP CRS 198°	Rwy Ldg TDZE Apt Elev	4028 934 934
----------------------------------------	------------------------	-----------------------------	-----------------------------------------

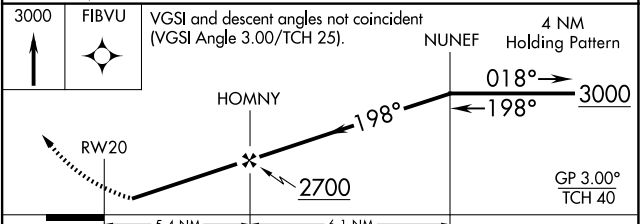
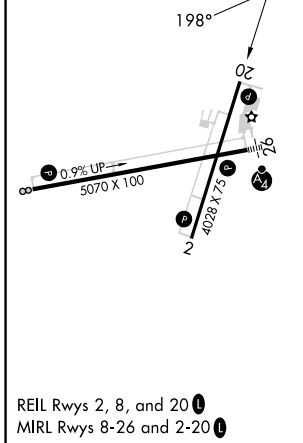
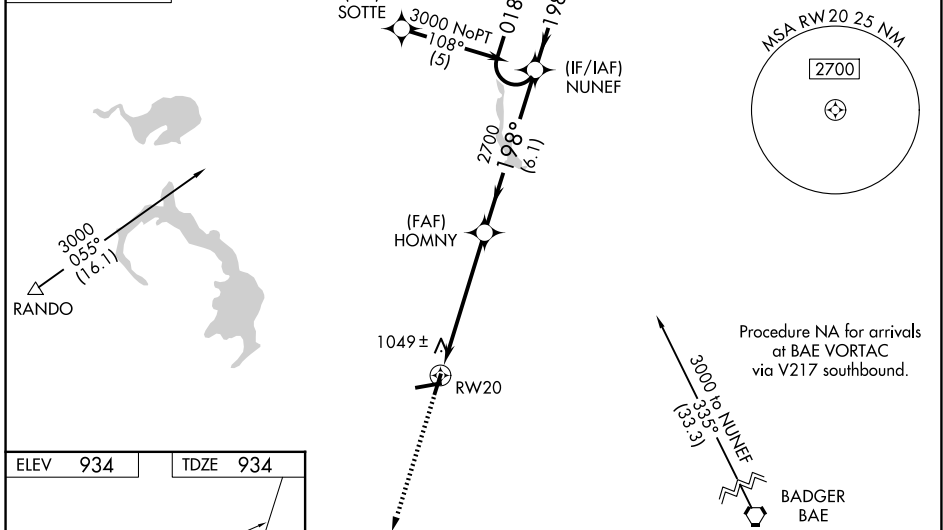
RNAV (GPS) RWY 20

DODGE COUNTY (UNU)

⚠ For uncompensated Baro-VNAV systems, LNAV/VNAV NA below -16° C (4° F) or above 54° C (130° F). DME/DME RNP-0.3 NA. When local altimeter setting not received, use Dane County Rgnl-Truax Fld altimeter setting and increase all DA/MDA 100 feet, increase visibilities ¼ mile. Baro-VNAV NA when using Dane County Rgnl-Truax Fld altimeter setting. Visibility reduction by helicopters NA.

⚠ MISSED APPROACH: Climb to 3000 direct FIBVU and hold.

AWOS-3 120.825	MADISON APP CON * 119.15 343.7	UNICOM 122.7 (CTAF)
--------------------------	------------------------------------------	-------------------------------



CATEGORY	A	B	C	D
LPV DA		1214-1	280 (300-1)	NA
LNAV/VNAV DA		1350-1½	416 (500-1½)	NA
LNAV MDA		1300-1	366 (400-1)	NA
CIRCLING	1440-1	506 (600-1)	1440-1½ 506 (600-1½)	NA

EC-3, 14 MAY 2026 to 11 JUN 2026

EC-3, 14 MAY 2026 to 11 JUN 2026