

# RNAV (GPS) RWY 35

OMAK (OMK)

APP CRS <b>009°</b>	Rwy Ldg TDZE Apt Elev	<b>4667</b> <b>1303</b> <b>1305</b>
------------------------	-----------------------------	-------------------------------------------

RNP APCH - GPS.

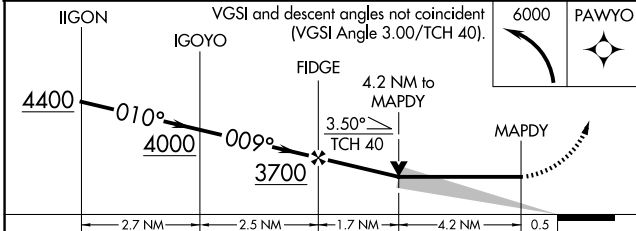
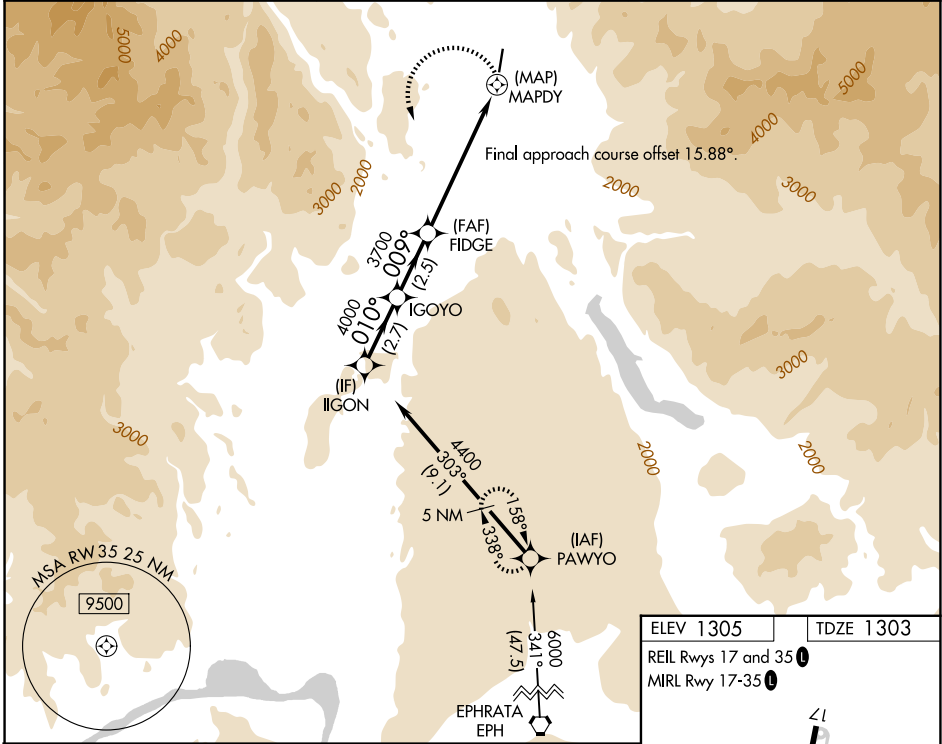
Circling NA east of Rwy 17-35.  
-14°C

MISSED APPROACH: Climbing left turn to 6000 direct PAWYO and hold.  
\*Missed approach requires minimum climb of 255 feet per NM to 4200.

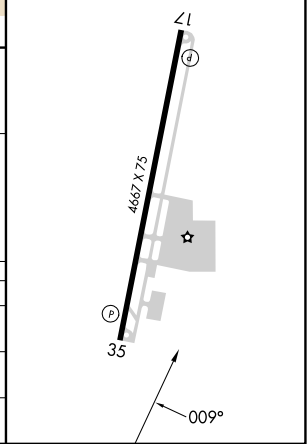
ASOS  
**118.325**

SEATTLE CENTER  
**126.1 291.6**

UNICOM  
**122.8** (CTAF)



ELEV 1305	TDZE 1303
REIL Rws 17 and 35	
MRL Rwy 17-35	



CATEGORY	A	B	C	D
LNAV MDA*	2840-1¼ 1537 (1600-1¼)	2840-1½ 1537 (1600-1½)	2840-3 1537 (1600-3)	NA
LNAV MDA	3120-1¼ 1817 (1900-1¼)	3120-1½ 1817 (1900-1½)	3120-3 1817 (1900-3)	NA
CIRCLING	3120-1¼ 1815 (1900-1¼)	3120-1½ 1815 (1900-1½)	3120-3 1815 (1900-3)	NA

NW-1, 14 MAY 2026 to 11 JUN 2026

NW-1, 14 MAY 2026 to 11 JUN 2026