

WAAS CH 99626 W18A	APP CRS 176°	Rwy Idg 3907 TDZE 757 Apt Elev 758
--	------------------------	---

RNAV (GPS) RWY 18

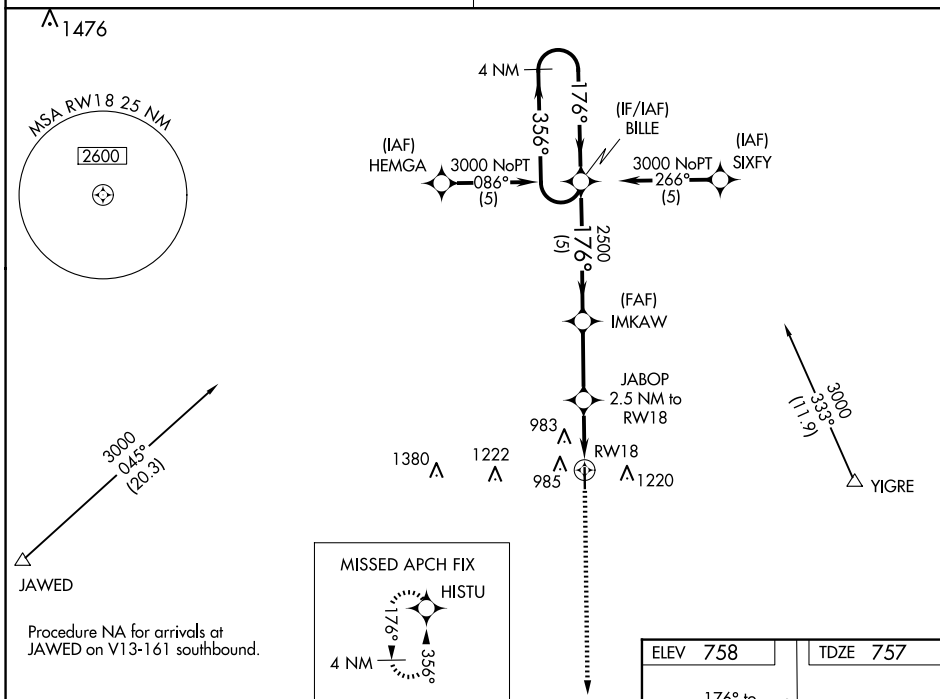
TRENTON MUNI (TRX)

Baro-VNAV NA. Use Chillicothe altimeter setting; when not received, use Kirksville altimeter setting and increase LPV DA to 1191 feet and all visibilities $\frac{3}{8}$ SM, LNAV/VNAV DA to 1341 feet and all visibilities $\frac{1}{4}$ SM; increase all MDAs 100 feet and Circling Cat B visibility $\frac{1}{4}$ SM. DME/DME RNP-0.3 NA. Helicopter visibility reduction below $\frac{3}{4}$ SM NA.

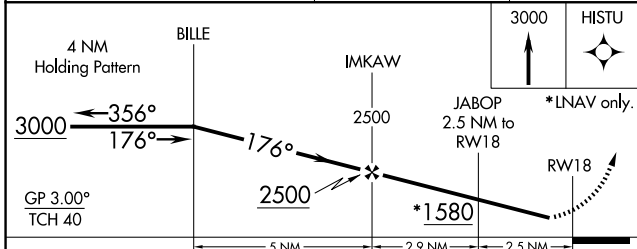
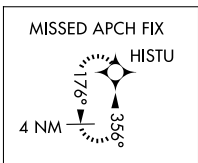
MISSED APPROACH: Climb to 3000 direct HISTU and hold.

KANSAS CITY CENTER
125.25 235.975

UNICOM
122.8 (CTAF) 0



Procedure NA for arrivals at JAWED on V13-161 southbound.



ELEV 758	TDZE 757
176° to RW18	
81 4307 X 75 36	
MIRL Rwy 18-36 0 REIL Rwy 18 and 36 0	

NC-3, 14 MAY 2026 to 11 JUN 2026

NC-3, 14 MAY 2026 to 11 JUN 2026