

LOC/DME I-HEW 110.5 Chan 42	APP CRS 168°	Rwy Ldg TDZE 152 Apt Elev 152	6002
---	------------------------	---	-------------

LOC RWY 17R

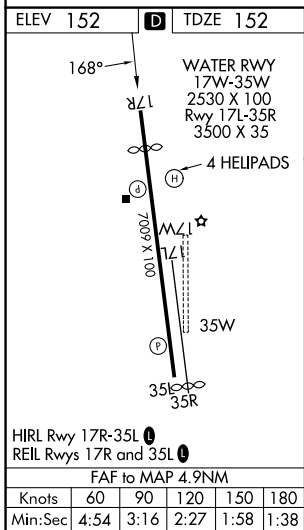
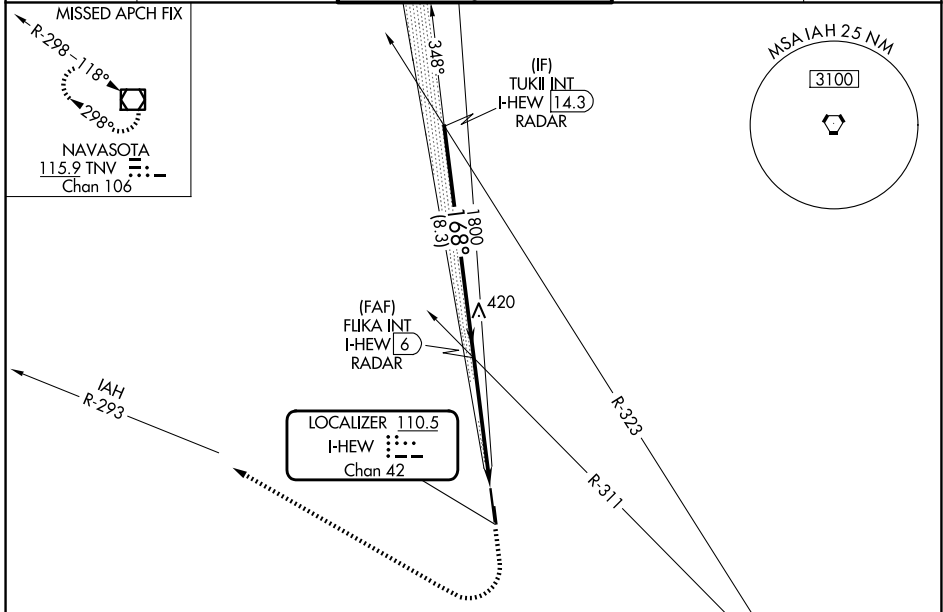
DAVID WAYNE HOOKS MEML (DWH)

RADAR required for procedure entry.

When local altimeter setting not received, use George Bush Intcnl/Houston altimeter setting and increase all MDA 40 feet; increase S-LOC 17R Cts C/D visibility 1/2 mile. Circling NA to Rwys 17W and 35W. Rwy 17R helicopter visibility reduction below 3/4 SM NA. Circling Rwy 35R NA at night.

MISSED APPROACH: Climb to 1200 then climbing right turn to 2000 on heading 325° and IAH VORTAC R-293 to TNV VOR/DME and hold.

ATIS 128.375	HOUSTON APP CON 119.7 281.4	HOOKS TOWER* 127.4 354.1 (E) 118.4 (CTAF) 354.1 (W)	GND CON 121.8 239.0	UNICOM 122.95
------------------------	---------------------------------------	---	-------------------------------	-------------------------



TUKII INT I-HEW 14.3 RADAR	FLIKA INT I-HEW 6 RADAR	I-HEW 1.1		
2000	1800			
8.3 NM	4.9 NM			
CATEGORY	A	B	C	D
S-LOC 17R	640-1	488 (500-1)	640-1 3/8	488 (500-1 3/8)
CIRCLING	640-1 488 (500-1)	660-1 508 (600-1)	680-1 1/2 528 (600-1 1/2)	780-2 628 (700-2)

SC-5, 14 MAY 2026 to 11 JUN 2026

SC-5, 14 MAY 2026 to 11 JUN 2026