

WAAS CH 45908 W30A	APP CRS 300°	Rwy Ldg TDZE Apt Elev	5000 1266 1274
--	------------------------	-----------------------------	---

RNAV (GPS) RWY 30

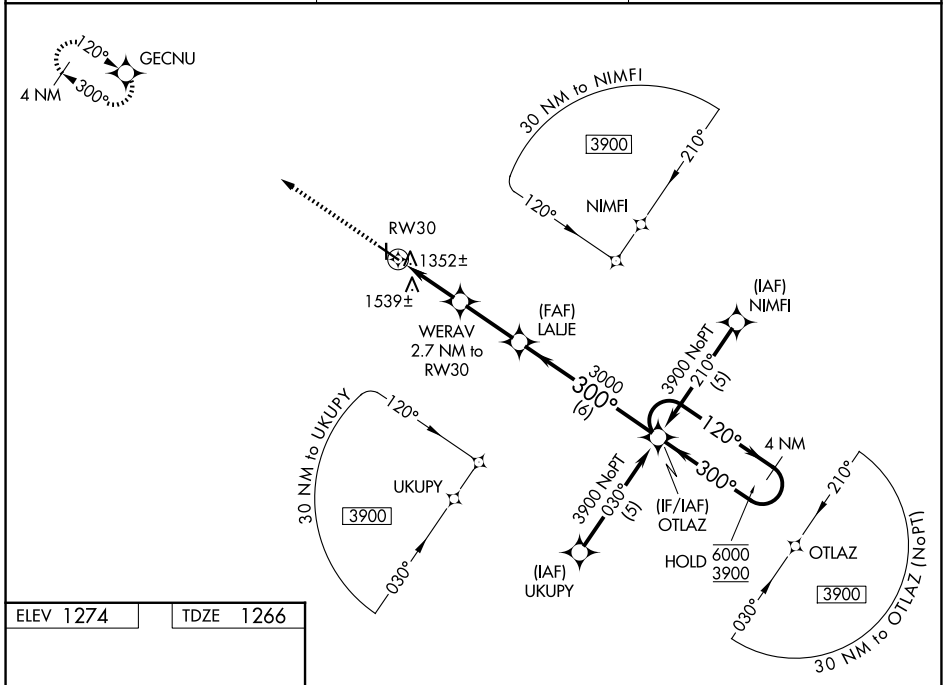
DENISON MUNI (DNS)

RNP APCH-GPS.

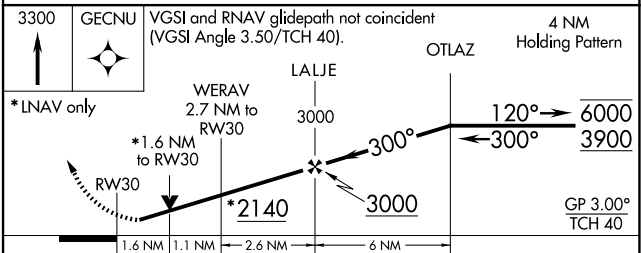
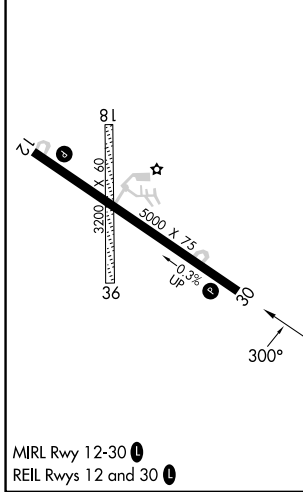
⚠ Circling NA to Rwy 18 and 36. Rwy 30 helicopter visibility reduction below ¼ SM NA. Baro-VNAV and VDP NA when using Carroll altimeter setting. When local altimeter setting not received, use Carroll altimeter setting; increase LPV DA to 1623 feet, increase LNAV/VNAV DA to 1925 feet and all visibilities ½ SM, increase all MDA 80 feet; increase LNAV and Circling visibility Cat C ¼ SM. For uncompensated Baro-VNAV systems, LNAV/VNAV NA below - 17°C or above 54°C.

MISSED APPROACH:
Climb to 3300 direct
GECNU and hold.

AWOS-3 119.95	MINNEAPOLIS CENTER 119.6 290.4	UNICOM 122.8 (CTAF)
-------------------------	--	-------------------------------



ELEV 1274	TDZE 1266
-----------	-----------



CATEGORY	A	B	C	D
LPV DA	1551-1	285 (300-1)		NA
LNAV/VNAV DA	1853-1¾	587 (600-1¾)		NA
LNAV MDA	1800-1	534 (600-1)	1800-1½ 534 (600-1½)	NA
CIRCLING	1840-1 566 (600-1)	1880-1 606 (700-1)	2100-2½ 826 (900-2½)	NA

NC-3, 14 MAY 2026 to 11 JUN 2026

NC-3, 14 MAY 2026 to 11 JUN 2026