

| | | |
|--|------------------------|---|
| WAAS CH 40234 W17A | APP CRS 175° | Rwy Ldg 3704 TDZE 27 Apt Elev 28 |
|--|------------------------|---|

RNAV (GPS) RWY 17

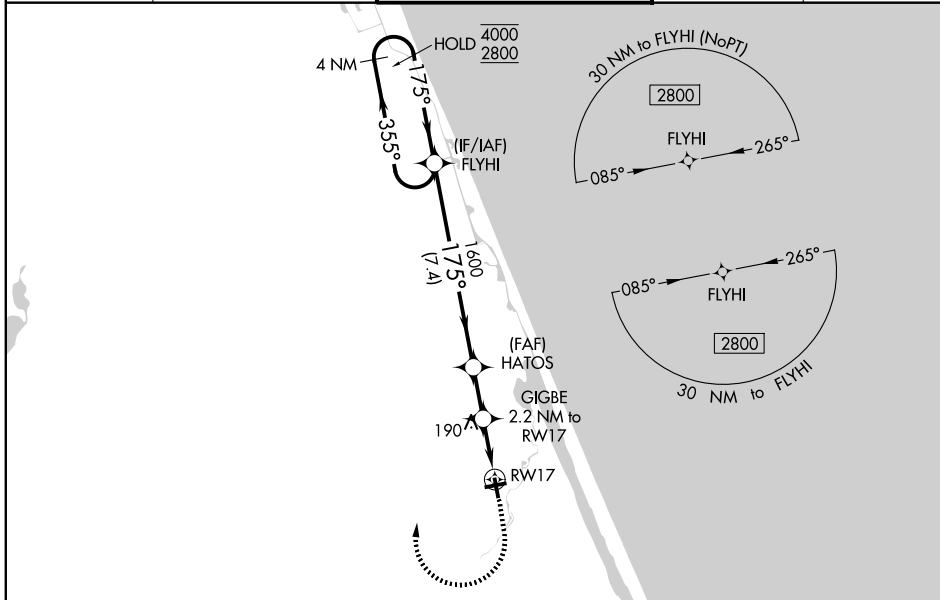
ORMOND BEACH MUNI (OMN)

RNP APCH - GPS.

⚠ For uncompensated Baro-VNAV systems, LNAV/VNAV NA below -15°C or above 54°C.
 ⚠ Baro-VNAV and VDP NA when using DAB altimeter setting. Rwy 17 helicopter visibility reduction below 3/4 SM NA. When local altimeter setting not received, use DAB altimeter setting: increase LPV DA to 321 feet; increase LNAV/VNAV DA to 316 feet; increase all MDAs 20 feet.

MISSED APPROACH: Climb to 600 then climbing right turn to 2800 direct FLYHI and hold, continue climb-in-hold to 2800.

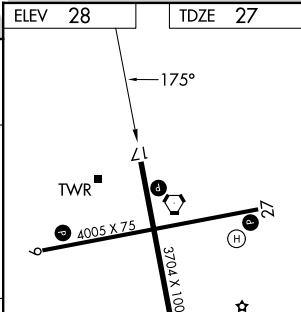
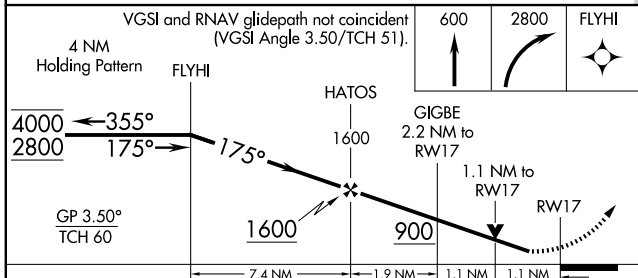
| | | | | |
|------------------------|---|--|---------------------------|-------------------------|
| ATIS 118.475 | DAYTONA APP CON 125.8 269.075 | ORMOND BEACH TOWER ★ 119.075 (CTAF) 0 | GND CON 121.625 | UNICOM 123.05 |
|------------------------|---|--|---------------------------|-------------------------|



SE-3, 14 MAY 2026 to 11 JUN 2026

SE-3, 14 MAY 2026 to 11 JUN 2026

| | |
|----------------|----------------|
| ELEV 28 | TDZE 27 |
|----------------|----------------|



| CATEGORY | A | B | C | D |
|--------------|---------|---------------|------------------------------|----|
| LPV DA | 302-7/8 | 275 (300-7/8) | | NA |
| LNAV/VNAV DA | 297-7/8 | 270 (300-7/8) | | NA |
| LNAV MDA | 500-1 | 473 (500-1) | 500-1 3/8 473 (500-1 3/8) | NA |
| CIRCLING | 500-1 | 472 (500-1) | 740-2 712 (800-2) | NA |

REIL Rwy 9, 17, 27, and 35 **0**
 MRL Rwy 9-27 and 17-35 **0**