

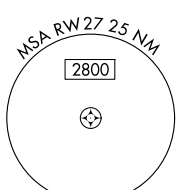
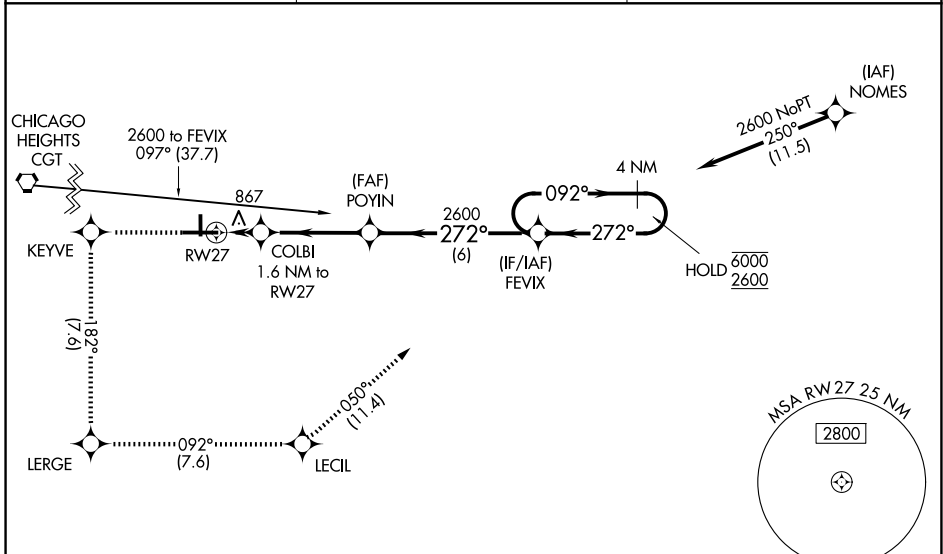
WAAS CH 86806 W27A	APP CRS 272°	Rwy Ldg TDZE Apt Elev	6500 770 770
--	------------------------	-----------------------------	---

RNAV (GPS) RWY 27

PORTER COUNTY RGNL (VPZ)

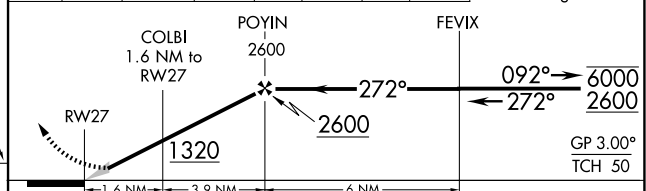
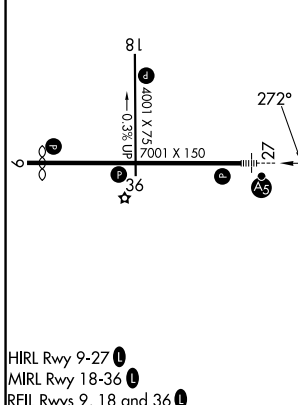
RNP APCH - GPS.	MALSR	MISSED APPROACH: Climb to 2600 direct KEYVE and on track 182° to LERGE and on track 092° to LECIL and on track 050° to FEVIX and hold.
<p>⚠ For uncompensated Baro-VNAV systems, LNAV/VNAV NA below -16°C or above 54°C. For inop ALS, increase LNAV Cats C and D visibility to 1½ SM.</p>		

ASOS 125.875	SOUTH BEND APP CON ★ 132.05 257.8	UNICOM 122.725 (CTAF)
------------------------	---	---------------------------------



ELEV 770	D	TDZE 770
----------	----------	----------

2600	KEYVE	↑	182°	LERGE	↑	092°	LECIL	↑	050°	FEVIX	4 NM Holding Pattern
------	-------	---	------	-------	---	------	-------	---	------	-------	----------------------



CATEGORY	A		B		C		D
LPV DA			1020-½		250 (300-½)		
LNAV/VNAV DA			1201-¾		431 (500-¾)		
LNAV MDA	1180-½		410 (500-½)		1180-¾		410 (500-¾)
CIRCLING	1260-1 490 (500-1)		1300-1 530 (600-1)		1360-1½ 590 (600-1½)		1620-2¾ 850 (900-2¾)

VALPARAISO, INDIANA
 HIRL Rwy 9-27
 MIRL Rwy 18-36
 REIL Rwy 9, 18 and 36

41°27'N-87°00'W

PORTER COUNTY RGNL (VPZ)

RNAV (GPS) RWY 27

EC-2, 14 MAY 2026 to 11 JUN 2026

EC-2, 14 MAY 2026 to 11 JUN 2026